



Tackling Crime

**Castlereagh Area
C District**

District Policing Partnership

6 Month Report

Figures extracted 8th October 2009



Area Commander's Introduction

Overall crime in the Castlereagh Area has fallen by 3.8%. The decrease has been more significant in the second quarter as the first quarter was actually showing a slight increase. Perhaps most significantly the number of burglaries has reduced by 41 representing a decrease of 19.9%. Domestic burglaries have reduced by 21 representing a decrease of 18.1%. The main increase in crime has been in Other Notifiable Offences which on closer examination reveals proactive policing activity. Crime Clearance rates have improved in virtually every crime type when compared with the Previous Financial year to Date (PFYTD). The headline figure has been an increase in the overall crime clearance rate from 14% to 24.9%.

The statistical information provided during the first quarter in relation to performance was certainly a positive indication and this report builds on the progress made and is certainly indicative of more sustainable performance throughout the entire year. The third quarter will be crucial to cementing the progress.

Policing with the Community with a Neighbourhood focus continues to underpin Service Delivery in the Area. Police are responding to an average of 286 incidents per week and investigating 46 crimes per week. Neighbourhood Teams continue to review all aspects of policing in their respective Areas with a view to identifying long term sustainable solutions.

Police Officers at all levels are encouraged to work in partnership with other agencies and we are receiving significant support from Castlereagh District Policing Partnership and Castlereagh Community Safety Partnership in respect of joint initiatives. An outline of current initiatives is set out in Section One.

Two themed meetings organized by Castlereagh District Policing Partnership have now taken place. Police Surgeries have organized and are now taking place in Moneyreagh and Carryduff.

Neighbourhood Policing teams have been strengthened by the allocation of one additional Sergeant and one additional Constable.

Chief Inspector McCoy
Castlereagh
Area Commander





Section 1) Policing with the Community

Review of Policing with the Community activities within the Castlereagh Area

ALTERNATIVE EDUCATION PROGRAMME

This programme runs in Knockbraken Health Care park, and is devised to target young students that have failed to sustain in mainstream schooling. Our Schools Liaison Officer delivers a six week course which aims to increase awareness around Alcohol, Drugs, Citizenship, Criminal Damage, Theft and Vandalism.

BEAM

Castlereagh CSP have assisted in funding a series of interactive student workshops, aimed at Firework regulations and safety. The workshops were taken by the PSNI and actors from the Bardic Educational Arts & Media (BEAM) Group. The main objectives are to make students aware of the law and legislation surrounding the use of fireworks, to become conscious of the dangers and how their misuse can affect others, and to encourage the youth population to think about their opinions on fireworks. Sessions have been scheduled to run from 2nd October – 22nd October 2009 in the following schools Dundonald High School, Knockbreda High School, Lagan College, Longstone School, Newtownbreda High School and Our Lady & St Patricks College specifically targeted at the Year 8 students. It is hoped that colleagues from the Northern Ireland Fire & Rescue Service and Home Accident Prevention will be able to input into some of the sessions.

BEE SAFE

The annual Bee Safe event held in April is a multi agency partnership, which seeks to educate and advise P7 pupils in a wide range of safety measures, which will prepare them for their transition to senior school. Partners include Police, Translink, Northern Ireland Fire and Rescue, Northern Ireland Electricity, Northern Ireland Blind Centre, Local Council and Home Accident and Prevention.

CASE

The citizen ship and safety education programme is continually run within all local schools to encourage personal safety, positive citizenship and the prevention of crime. A range of subjects that are covered are Drugs awareness, Anti-Social Behaviour and Internet Safety.



COP-CARD

A pilot scheme launched in Brooklands Primary School in June. This scheme is aimed to encourage young people to familiarise themselves with their local community, and to get involved with the local community groups. This scheme is due to finish at the end of November, and will be reviewed.

DIGITAL SIGNAGE

This is a new scheme, which will be launched early December. It is a freestanding mobile digital display stand, which will be displayed in Forestside, Tesco Newtownbreda, Asda Dundonald and the Council offices. This new technology will display a number of campaigns and information – Crime Prevention, Drink Driving awareness, Neighbourhood information, the local Christmas Campaign (content to be confirmed); it also envisaged that our colleagues from the Northern Ireland Fire and Rescue Service will provide a message as well as PIP Suicide Awareness, Home accident and prevention and the District Policing Partnership. The display unit has a range of attachments for dispensing leaflets and brochures etc and is also Bluetooth enabled.

DRUGS AWARENESS

This is an ongoing programme run within the secondary schools in the Castlereagh area, this programme is designed to make students aware of the effects of drugs, the consequences of the misuse of drugs and also the general legislation. Our liaison officer also delivers a drugs awareness programme to teachers, this is designed to update them on drugs trends and use patterns.

NEIGHBOURHOOD WATCH

There are currently **15** Neighbourhood Watch schemes in operation in the area

- 1 Glenhugh Park, Castlereagh
- 42 Glenhugh Park, Castlereagh
- Sunderland Road/Stirling Avenue, Castlereagh
- Ballyhanwood, Dundonald
- Ballyrussell Road, Dundonald
- Manns Road, Dundonald
- Oakwood Avenue, Carryduff



- The Crescent, Carryduff
- Wynchurch Avenue, Castlereagh
- Peartree Hill, Dundonald
- Downshire Road
- Willowbank Drive
- Millars Forge
- Lenaghan Park
- Cairnshill Court.

SAFETY WRISTBAND

This initiative was launched at Marks & Spencer's, Forestside on the 28/11/06 and continues throughout all shops within Forestside. The project was funded by the CSP and is aimed at pre-school, key stage one children and young persons with learning difficulties; it has also been adopted by the NSPCC to run in conjunction with their 'Safe Child' scheme.

SHOPPING TROLLEY SIGNAGE

This was initially launched in Forestside, where all trolleys were fitted with signage that corresponded with the up-to-date police message, which was highlighting the problem of handbag thefts, as part of this campaign handbag lanyards were also given out to shoppers to secure their handbags to their trolleys. As this has been successful it will also be launched in Asda in Dundonald and Tesco Newtownbreda with our local Halloween message highlighting firework safety.



Section 2) Progress towards achieving targets in the Local Policing Plan for 2009/2010^{1,2}

| Objective 1: In partnership with the community and other agencies, to make communities and neighbourhoods safe and feel safe | | | | | |
|---|------------------------|------------------------|---------------------------------|-----------------------------------|---|
| Local Policing Plan Target | Apr - Sept 2008 | Apr - Sept 2009 | Variation from last year | Target on course to be met | Area Commander's comment on reasons for change in performance |
| 1.1.2 To reduce the total number of recorded crimes in line with service targets (1,2) | 1170 | 1125 | -3.8% | YES | The total number of crimes has fallen slightly when compared with PFYTD. At the three month report we were showing an increase of 1.7% so the trend is positive. The main increases have been in other notifiable offences, fraud and forgery and Robbery. Numerically other notifiable offences continue to be the largest increase from 30 to 61. Cases of Fraud and Forgery have increased from 50 to 77. The number of Robberies has increased by 4. On a District level crime has increased by 8.6% and regionally by 3.4% |
| 1.3.2 To reduce the number of domestic burglaries in line with service targets (1,3) | 116 | 95 | -18% | YES | Burglary has reduced by 41 and domestic burglary has reduced by 21. There has been a continued focus on burglary during the period. Hotspot analysis has been used to direct patrols, investigative lines are being pursued and our offender management strategy focuses activity towards those |

1

2



| | | | | | |
|---|------|------|-------|------------|---|
| | | | | | individuals suspected of involvement |
| 1.5.1 To reduce the number of incidents of anti-social behaviour to ensure a 15% reduction by 31/3/2011. | 1287 | 1241 | -3.6% | YES | Anti-social behaviour shows a reduction on the PFYTD and is on target to achieve the 15% reduction by 2011. A number of operations have been conducted across the Area and there are a number of diversionary activities taking place with partner agencies. There is significant support from the DPP and the CSP. |
| Additional comments, including any 'control strategies' and their impact on Local Policing Plan targets | | | | | |
| Operation Blitzen was coordinated to address an increase in Burglaries throughout the last financial year. Burglaries have reduced and detection rate has increase. | | | | | |
| To carefully analyse all crime types and ascertain any trends, hotspots or repeat offending with a view to early and effective resolution. Increased awareness of problem areas leading to a greater emphasis and focused response and patrol activity. | | | | | |
| Community Safety Strategy which is closely and carefully linked to local priorities. Focused use of available resources against identified priorities. | | | | | |
| Youth Alcohol Strategy/ Operation Snapper. Tar-getting and measuring of activities directed towards anti-social behaviour and its links with alcohol. | | | | | |
| Offender Management Strategy. Detailed analysis of offenders with specific action plans in relation to Carefully identified Area and District Offenders. | | | | | |
| Op Convertor. Co-ordinates and prioritises activity towards maximising forensic opportunities. CSI attendance at all Burglary scenes. | | | | | |



Objective 2: To continue to build, broaden and sustain confidence in the Police.

| Local Policing Plan Target | Apr - Sept 2008 | Apr - Sept 2009 | Variation from last year | Target on course to be met | Area Commander's comment on reasons for change in performance |
|---|-----------------|-----------------|--------------------------|----------------------------|--|
| 2.4.5 To increase the clearance rate by 3% points (1) | 14% | 25% | +11% | YES | The increase in the clearance rate is significant and is beginning to look sustainable. Our procedures for reviewing investigations and meeting file submission times are working well and achieving results. The interface with PPS is working more efficiently. Clearance rates have improved in all crime types |

Additional comments, including any 'control strategies' and their impact on Local Policing Plan targets



Section 3) Summary of Recorded Crime and Clearance Rates within the Castlereagh Area

| Crime Classes | Recorded Apr-Sept 08/09 | Recorded Apr-Sept 09/10 | % Change | Cleared Apr-Sept 08/09 | % Cleared Apr-Sept 08/09 | Cleared Apr-Sept 09/10 | % Cleared Apr-Sept 09/10 |
|------------------------------------|-------------------------------|-------------------------------|--------------|------------------------------|--------------------------------|------------------------------|--------------------------------|
| 1. Offences against the person | 226 | 222 | -1.8% | 54 | 23.9% | 99 | 44.6% |
| 2. Sexual Offences | 34 | 16 | -52.9% | 4 | 11.8% | 4 | 25% |
| 3. Burglary | 206 | 165 | -19.9% | 4 | 1.9% | 15 | 9.1% |
| (Domestic Burglary) | 116 | 95 | -18.1% | 1 | 0.9% | 7 | 7.4% |
| 4. Robbery | 10 | 14 | +40% | 1 | 10.0% | 4 | 28.6% |
| 5. Theft | 300 | 251 | -16.3% | 56 | 18.7% | 65 | 25.9% |
| (Theft from vehicles) | 48 | 31 | -35.4% | 0 | 0.0% | 2 | 6.5% |
| (Theft of Vehicles) | 27 | 29 | +7.4% | 1 | 3.7% | 8 | 27.6% |
| 6. Fraud and Forgery | 50 | 77 | +54% | 2 | 4.0% | 7 | 9.1% |
| 7. Criminal Damage | 310 | 308 | -0.6% | 16 | 5.2% | 26 | 8.4% |
| 8. Offences against the state | 4 | 7 | +75% | 1 | 25.0% | 3 | 42.9% |
| 9. Other notifiable offences | 30 | 61 | +103.3% | 14 | 46.7% | 55 | 90.2% |
| Violent Crime (1,2 & 4) | 270 | 252 | -6.6% | 59 | 21.9% | 107 | 42.5% |
| Total Crime | 1170 | 1125 | -3.8% | 152 | 13.0% | 280 | 24.9% |



Section 4) Trend data for Local Policing Plan targets 2009/2010³

| Local Policing Plan Targets for 2009/2010 | Apr - Jun 2009 | Target on course to be met | Apr - Sep 2009 | Target on course to be met | Apr - Dec 2009 | Target on course to be met | Apr 2009 - Mar 2010 | Target on course to be met |
|--|----------------|----------------------------|----------------|----------------------------|----------------|----------------------------|---------------------|----------------------------|
| 1.1.2 To reduce the total number of recorded crimes in line with service targets (1,2) | +1.7% | 12mth target -5.1% | -3.8% | YES | | | | |
| 1.3.2 To reduce the number of Domestic burglaries in line with service targets. | -12.3% | 12mth target -12.5% | -18% | YES | | | | |
| 1.5.1 To reduce the number of incidents of anti-social behaviour to ensure a 15% reduction by 31/3/2011. | -17.7% | YES | -3.6% | YES | | | | |
| 2.4.1 To increase the clearance rate by 3% | +13.3% | YES | +11% | YES | | | | |

Note: The trend information is a snapshot each quarter of how the local PSNI has been performing against Local Policing Plan targets during the year.

³ The Local Policing Plan targets are shown for example purposes only and are taken from Ards Local Policing Plan 2009/2010.



Section 5) Area's Progress towards achieving targets in the Northern Ireland Policing Plan for 2009/2010⁴

| Objective 1: In partnership with the community and other agencies, to make communities and neighbourhoods safe and feel safe | | | | | | |
|--|---|---|--------------------------------|--|-------------------------|------------------------|
| Northern Ireland Policing Plan Target | Area Contribution Apr 2008 – Sep 2008 | Area Contribution Apr 2009 – Sep 2009 | Variation from last year | Target on course to be met (including % change) | | |
| | | | | Area | District | Northern Ireland |
| 1.1.1 To ensure that by 2010/2011, there are fewer than 100,000 crimes recorded. | 1170 | 1125 | -3.8% | TGT -5.1% ACT -3.8% | TGT -3.6% ACT +8.6% | TGT -4.6% ACT +3.7% |
| 1.3.1 To ensure that by 2010/2011, there are fewer than 6,000 domestic burglaries recorded. | 116 | 95 | -18% | TGT -12.5% ACT -18% | TGT -12.5% ACT -1.1% | TGT -9.2% ACT +8.0% |
| 1.5.1 To reduce the number of incidents of anti-social behaviour to ensure a 15% reduction by 31/3/2011. | 1287 | 1241 | -3.6% | TGT 0.01% ACT -3.6% | TGT 0.01% ACT -1.7% | TGT -1.6% ACT -2.9% |
| Additional comments, including any 'control strategies' and their impact on Northern Ireland Policing Plan targets | | | | | | |

⁴ Local PSNI only need to provide information on targets that can be measured locally. Therefore not all Annual Policing Plan targets are shown in this table, for example, Omnibus Survey targets are not shown.



Objective 2: To continue to build, broaden and sustain confidence in the police

| Northern Ireland Policing Plan Target | Area Contribution Apr 2008 – Sep 2008 | Area Contribution Apr 2009 – Sep 2009 | Variation from last year | Target on course to be met (including % change) | | |
|---|---|---|--------------------------------|--|----------|---------------------|
| | | | | Area | District | Northern Ireland |
| 2.4.1 To increase the clearance rate by 3% pts. | 14% | 25% | +11% | +11% | +3% | +3 |
| Additional comments, including any 'control strategies' and their impact on Northern Ireland Policing Plan targets | | | | | | |
| It has been proposed in the Policing plan 2009-2012 that a 3% increase in the clearance rate was to be achieved across the service. | | | | | | |



ALL CRIME

| 2006/2007 | | | | 2007/2008 | | | | 2008/2009 | | | | 2009/2010 | | | |
|-----------|-------|-------|-------|-----------|-------|-------|-------|-----------|-------|-------|-------|-----------|-------|-------|-------|
| Qtr 1 | Qtr 2 | Qtr 3 | Qtr 4 | Qtr 1 | Qtr 2 | Qtr 3 | Qtr 4 | Qtr 1 | Qtr 2 | Qtr 3 | Qtr 4 | Qtr 1 | Qtr 2 | Qtr 3 | Qtr 4 |
| 674 | 1327 | 1990 | 2562 | 541 | 1009 | 1475 | 2112 | 589 | 1170 | 1692 | 2355 | 599 | 1125 | | |

DOMESTIC BURGLARY

| 2006/2007 | | | | 2007/2008 | | | | 2008/2009 | | | | 2009/2010 | | | |
|-----------|-------|-------|-------|-----------|-------|-------|-------|-----------|-------|-------|-------|-----------|-------|-------|-------|
| Qtr 1 | Qtr 2 | Qtr 3 | Qtr 4 | Qtr 1 | Qtr 2 | Qtr 3 | Qtr 4 | Qtr 1 | Qtr 2 | Qtr 3 | Qtr 4 | Qtr 1 | Qtr 2 | Qtr 3 | Qtr 4 |
| 42 | 90 | 160 | 237 | 64 | 96 | 141 | 184 | 57 | 116 | 185 | 248 | 50 | 95 | | |

ANTI SOCIAL BEHAVIOUR

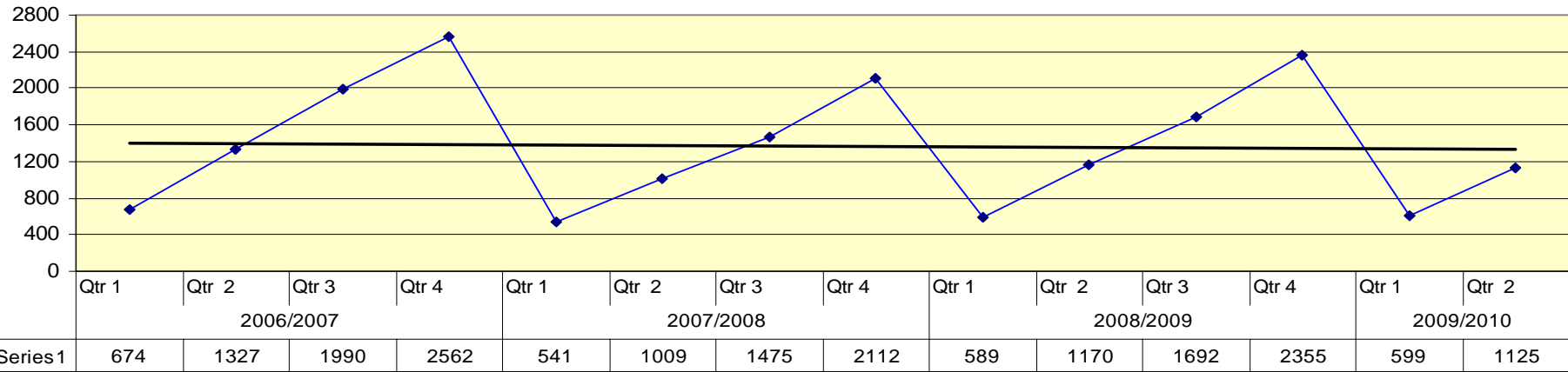
| 2006/2007 | | | | 2007/2008 | | | | 2008/2009 | | | | 2009/2010 | | | |
|-----------|-------|-------|-------|-----------|-------|-------|-------|-----------|-------|-------|-------|-----------|-------|-------|-------|
| Qtr 1 | Qtr 2 | Qtr 3 | Qtr 4 | Qtr 1 | Qtr 2 | Qtr 3 | Qtr 4 | Qtr 1 | Qtr 2 | Qtr 3 | Qtr 4 | Qtr 1 | Qtr 2 | Qtr 3 | Qtr 4 |
| 1063 | 2110 | 2982 | 3658 | 1025 | 1923 | 2607 | 3309 | 753 | 1287 | 1793 | 2295 | 624 | 1241 | | |

CLEARANCE RATES

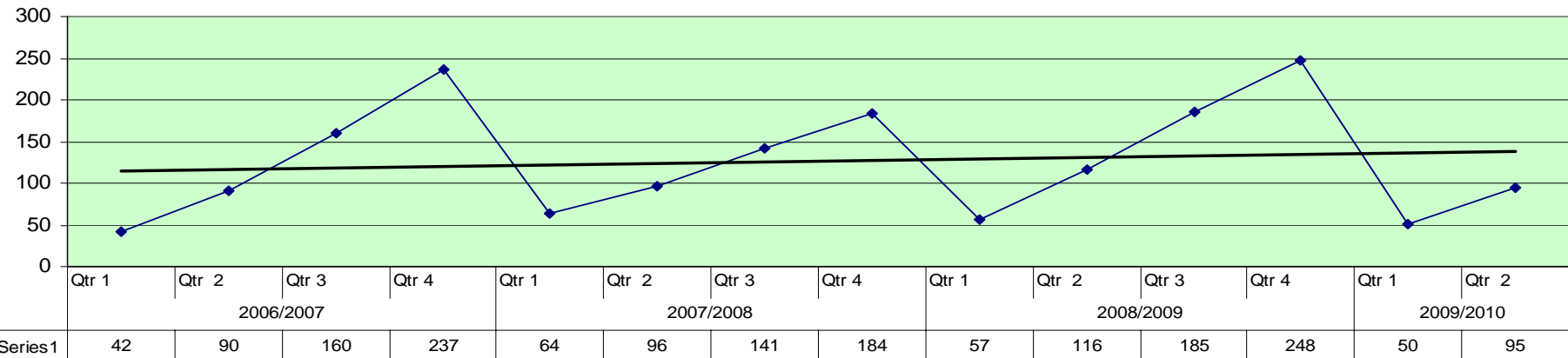
| 2006/2007 | | | | 2007/2008 | | | | 2008/2009 | | | | 2009/2010 | | | |
|-----------|-------|-------|-------|-----------|-------|-------|-------|-----------|-------|-------|-------|-----------|-------|-------|-------|
| Qtr 1 | Qtr 2 | Qtr 3 | Qtr 4 | Qtr 1 | Qtr 2 | Qtr 3 | Qtr 4 | Qtr 1 | Qtr 2 | Qtr 3 | Qtr 4 | Qtr 1 | Qtr 2 | Qtr 3 | Qtr 4 |
| 23.1% | 22.5% | 16.4% | 20.3% | 18.9% | 21.3% | 21.0% | 22.1% | 14.1% | 13.0% | 15.5% | 17.9% | 27.4% | 24.9% | | |



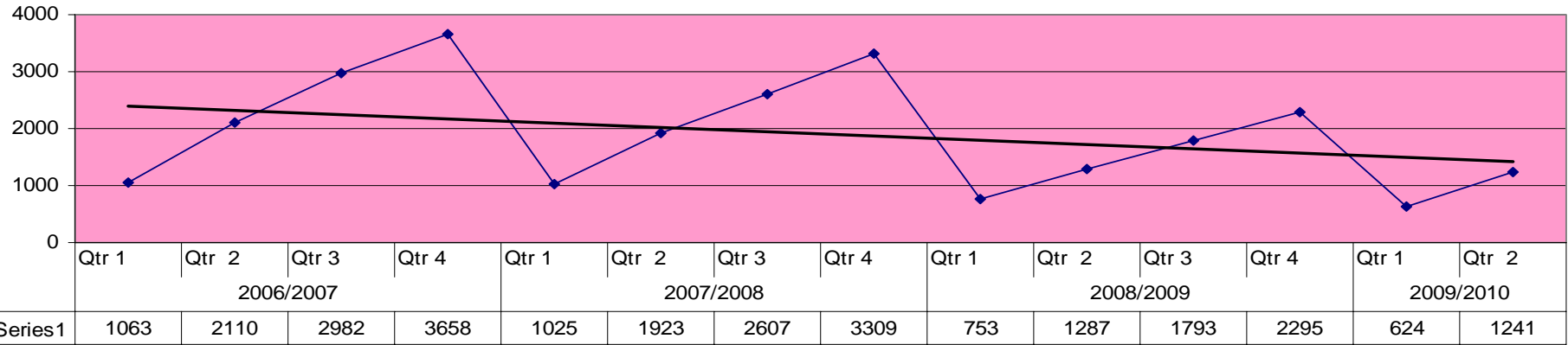
All Crime



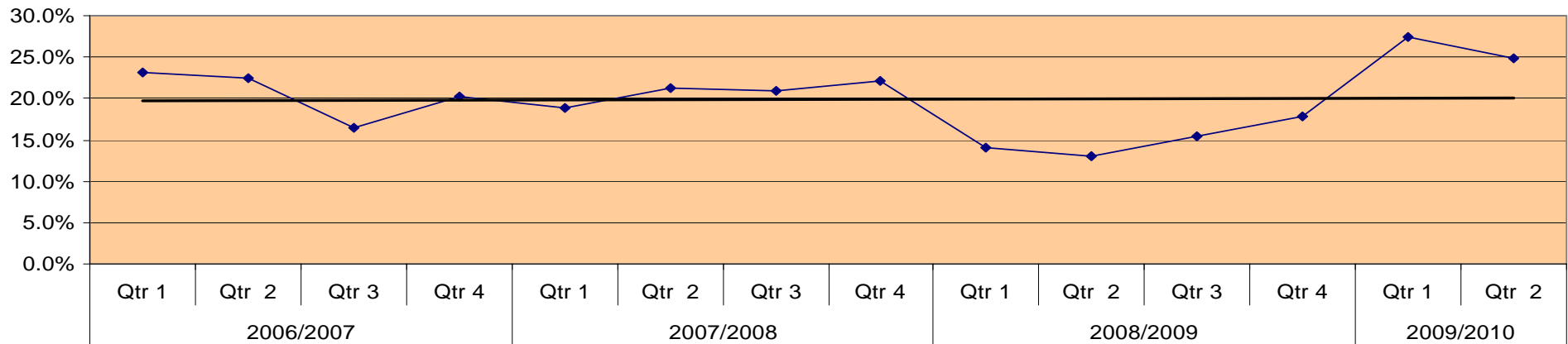
Domestic Burglary



Anti Social Behaviour



Clearance Rates



Glossary of Terms

| | | | |
|---------|--|--------|---|
| ABC | Acceptable Behaviour Contract | NIACRO | Northern Ireland Association for the Care and Resettlement of Offenders |
| ABH | Actual Bodily Harm | NICCY | Northern Ireland Commissioner for Children and Young People |
| ANPR | Automatic Number Plate Recognition | NIHRC | Northern Ireland Human Rights Commission |
| ARA | Asset Recovery Agency | NIM | National Intelligence Model |
| ASB(O) | Anti-Social Behaviour (Order) | NIO | Northern Ireland Office |
| CID | Criminal Investigation Department | NIPB | Northern Ireland Policing Board |
| CJI(NI) | Criminal Justice Inspectorate (NI) | NISRA | Northern Ireland Statistics and Research Agency |
| CPLC | Community Police Liaison Committee | NSIR | National Standard for Incident Recording |
| CRO | Criminal Records Office | OCTF | Organised Crime Task Force |
| CSI | Crime Scene Investigator | OCU | Operational Command Unit |
| CSP | Community Safety Partnership | OPONI | The Office of the Police Ombudsman for Northern Ireland |
| CSU | Community Safety Unit (NIO) | PACE | Police and Criminal Evidence (Act) |
| CSU | Central Statistics Unit, PSNI | PCSO | Police Community Support Officer |
| DCU | District Command Unit | PFNI | Police Federation for Northern Ireland |
| DPP | District Policing Partnership | PSNI | Police Service of Northern Ireland |
| FTC | Fatal Traffic Collision | PTR | Part Time Reserve |
| FTR | Full Time Reserve | RTC | Road Traffic Collision |
| GBH | Grievous Bodily Harm | SNEN | Single Non-Emergency Number |
| GIS | Geographical Information System | SOC | Scene of Crime |
| HVP | High Visibility Patrol | TSG | Tactical Support Group |
| KPI | Key Performance Indicator | VFM | Value for Money |
| KSI | Killed or Seriously Injured | YCA | Youths Causing Annoyance |
| LGBT | Lesbian, Gay, Bisexual, Transgender | YDO | Youth Diversion Officer |
| MLO | Minority Liaison Officer | | |
| NAO | National Audit Office | | |
| NCIS | National Criminal Intelligence Service | | |
| | | | |
| | | | |



