



Tackling Crime

North Down Area

District Policing Partnerships

12 Month Report

Figures Extracted 11 May 2010



Local people shaping local policing

Section 1) Progress towards achieving targets in the Local Policing Plan for 2009/2010

Objective 1: In partnership with the community and other agencies, to make communities and neighbourhoods safe and feel safe					
North Down Policing Plan Target	Apr-Mar 08/09	Apr-Mar 09/10	Change (Raw Data)	Target	Comment on reasons for change in performance
1.2.2. To reduce the level of assaults (1,2)	802	711	-91	✓	These reductions are now month on month, year on year. Having achieved significant improvements relating to street violence this year our focus will be on domestic related assaults
1.3.2. To reduce the number of domestic burglaries in line with service targets (3)	225	223	-2	✓	Following a significant spike in the middle of the year we have worked extremely hard to prevent domestic burglaries in the latter part of the year and this has paid dividends by achieving another reduction this year
1.4.2. To increase the number of illegal drug seizures (4)	75	99	+24	✓	This has been a difficult year with the increased awareness of 'legal' highs. Thankfully a number of these have now been classified and will allow us greater opportunities to tackle this problem with the support of the community
1.5.1. To reduce the number of incidents of anti-social behaviour to ensure a 15% reduction by 31/3/2011 (4)	3567	2919	-648	✓	Again this is a year on year reduction. Our success is based on the excellent partnerships formed with statutory and voluntary groups putting in place schemes that are achieving long term solutions to this type of behaviour
1.6.2. To reduce crimes of criminal damage recorded in line with service targets. (3)	877	868	-9	✓	Despite a difficult start to the year, our continued hard work has achieved a reduction in offences and also an increase in detections.
1.7.1. To contribute to reducing the number of people killed or seriously injured on the road. (1)	26	35	+9	✗	Unfortunately one person lost their life on our roads this year. Although one less than last year, it is still one too many.

Assaults include common assault, aggravated assaults, assault occasioning actual bodily harm, wounding/grievous bodily harm and wounding/grievous bodily harm with intent (Excluding assaults on Police

Section 2) Trend data for Local Policing Plan targets 2009/2010

North Down Policing Plan Targets for 2009/2010								
North Down Policing Plan Targets for 2009 / 2010	Apr 09 - Jun 09	Target	Apr 09 - Sept 09	Target	Apr 09 - Dec 09	Target	Apr 09 - Mar 10	Target
1.2.2. To reduce the level of assaults (1,2)	184	✓	372	✓	549	✓	711	✓
1.3.2. To reduce the number of domestic burglaries in line with service targets (3)	39	✓	101	✗	174	✗	223	✓
1.4.2. To increase the number of illegal drug seizures (4)	23	✓	61	✓	85	✓	99	✓
1.5.1. To reduce the number of incidents of anti-social behaviour to ensure a 15% reduction by 31/3/2011. (4)	972	✓	1731	✓	2348	✓	2919	✓
1.6.2. To reduce crimes of criminal damage recorded in line with service targets. (3)	277	✗	520	✗	696	✗	868	✓
1.7.1. To contribute to reducing the number of people killed or seriously injured on the road.(1)	4	✓	6	✓	15	✗	35	✗

Note: The trend information is a snapshot each quarter of how the local PSNI has been performing against Local Policing Plan targets during the year.

Section 3) Summary of Recorded Crime and Clearance Rates within the North Down Area

Measures	Recorded April 2008 – Mar 2009	Recorded April 2009 – Mar 2010	% Change	Cleared April 2008– Mar 2009	% Cleared April 2008 – Mar 2009	Cleared April 2009 – Mar 2010	% Cleared April 2009 – Mar 2010
1. Offences against the person	970	944	-2.7%	312	32.2%	379	40.1%
2. Sexual offences	49	63	28.6%	11	22.4%	16	25.4%
3. Burglary	387	336	-13.2%	56	14.5%	44	13.1%
Domestic Burglary	225	223	-0.9%	33	14.7%	20	9.0%
4. Robbery	17	11	-35.3%	3	17.6%	2	18.2%
5. Theft	870	823	-5.4%	181	20.8%	246	29.9%
Theft from motor vehicle	96	128	33.3%	3	3.1%	3	2.3%
Theft/unauthorised taking of motor vehicle	76	65	-14.5%	19	25.0%	29	44.6%
6. Fraud and Forgery	132	117	-11.4%	29	22.0%	27	23.1%
7. Criminal Damage	877	868	-1.0%	98	11.2%	128	14.7%
8. Offences against the state	35	33	-5.7%	15	42.9%	21	63.6%
9. Other notifiable offences	139	173	24.5%	92	66.2%	141	81.5%
Violent Crime (1,2 & 4)	1036	1018	-1.7%	326	31.5%	397	39.0%
TOTAL CRIME	3476	3368	-3.1%	797	22.9%	1004	29.8%

ote: At a Total Crime level it is possible to identify the number of crimes that are under process, i.e. have not yet been included in the recorded crime figures – this is referred to as the crime undercount. This should be clearly stated beneath the table.

A breakdown of crime types as shown in the table above

Offences against the person (class 1)	Sexual offences (class 2)	Burglary (class 3)
---------------------------------------	---------------------------	--------------------

<p>Murder Infanticide Threat or conspiracy to murder Causing death/GBH by dangerous driving or aggravated vehicle taking Wounding with intent/GBH with intent Wounding/GBH AOABH Common assault/aggravated assault Assault on police Intimidation Harassment Explosives offences endangering life Firearms offences endangering life Other offences against the person</p>	<p>Manslaughter Attempted murder</p>	<p>Rape Attempted rape Unlawful carnal knowledge of a girl under 14 years Unlawful carnal knowledge of a girl 14 and under 17 years Indecent assault on a female Indecent assault on a female child Indecent assault on a male Indecent assault on a male child Indecency between males Indecent exposure Indecent conduct towards a child Other sexual offences</p>	<p>Domestic burglary <ul style="list-style-type: none"> • Burglary in a dwelling • Aggravated burglary in a dwelling Non domestic burglary <ul style="list-style-type: none"> • Burglary in a building other than in a dwelling • Aggravated burglary other than in a dwelling Going equipped</p>
<p>Robbery (class 4) Robbery Armed robbery Hijacking</p>	<p>Theft (class 5) Theft, one person from another Theft in a dwelling Theft by an employee Theft of pedal cycles Shoplifting Vehicle crime <ul style="list-style-type: none"> • Theft from motor vehicles • Theft or unauthorised taking of motor vehicles Vehicle tampering/interference Handling of stolen goods Other thefts</p>	<p>Fraud and forgery (class 6) Deception Forgery and counterfeiting Making off without payment Other frauds</p>	
<p>Criminal damage (class 7) Arson Petrol bombing offences Explosive offences Criminal damage/malicious damage offences Other criminal damage offences</p>	<p>Offences against the state (class 8) Offences under anti-terrorism legislation Firearms offences Offences under Public Order (NI) Order Other offences against the public order</p>	<p>Other notifiable offences (class 9) Blackmail Kidnapping and false imprisonment Drug offences – trafficking and non-trafficking offences Dangerous driving Breach of orders Other notifiable offences</p>	

Anti-Social Behaviour

ASB Incidents are a group of non-crime incidents that are reported to the police (i.e. they do not result in a notifiable offence). These are recorded by the PSNI on their Command & Control system and are classified as ASB in accordance with the National Standard for Incident Recording (NSIR). ASB incidents consist of the following incident types:

- Abandoned Vehicles - (Not Stolen Or Causing An Obstruction)
- Animal Problems
- Begging / Vagrancy
- Hoax Calls To Emergency Services
- Inappropriate Use / Sale / Possession Of Fireworks
- Noise
- Malicious Communications
- Prostitution Related Activity
- Rowdy / Nuisance - Environmental Damage / Littering
- Rowdy / Nuisance - Neighbours
- Rowdy / Nuisance - Rowdy or Inconsiderate Behaviour
- Street Drinking
- Substance Misuse
- Trespass
- Vehicle Nuisance / Inappropriate Vehicle Use

Sanction / Non Sanction Clearances

Clearances (or detections as they may alternatively be known) are, broadly speaking, those crimes that have been 'cleared up' by the police. Crimes are counted as 'cleared or detected' in accordance with strict counting rules issued by the Home Office.

Sanction clearances refer to clearances where a 'sanction' is taken against the accused person. The following methods of clearance involve a formal sanction:

- Charging or issuing a summons to an offender (this will not necessarily result in a subsequent conviction at court)
- Issuing a caution to the offender
- Having the offence accepted for consideration in court
- The offender is a juvenile who is dealt with by means of an informed warning, restorative caution or prosecutorial diversion

The use of **non sanction clearances** are limited to specified offences and circumstances and include the following reasons:

- The Public Prosecution Service (PPS) directs no prosecution for an 'indictable only' offence
- The offence is an 'indictable only' offence and the case cannot proceed because the offender has died.
- 'Indictable only' offences are the most serious types of offences and are those which must be tried in the Crown Court.

Section 4) Policing with the Community [OPTIONAL]

Strategy and/or progress under Policing with the Community	Impact
Dealing with Difference Project - funded by PWCF and C District DPP's. This project is in the final stage.	This project commenced with 40 young people aged 14-17yrs. 10 from each district. The last workshop was attended by 25 of the participants. The workshop again addressed Differences and issues around Sectarianism and Racism. The young people met Richard Moore founder of Children in Crossfire who relayed his personal life story. The topics covered and the experience of meeting outside speakers including Eugene Black, a survivor of the Holocaust and Richard Moore is hoped to have made participants think about tolerance and forgiveness and how this can be filtered into every day life. A celebratory event is to be held to allow parents to hear about the programme.

Section 5) Community Safety Projects

Strategy and/or contribution towards Community Safety Projects	Impact
<p>Under Age Drinking/ Anti –Social Behaviour – promotion of You, Your Child and Alcohol leaflet through Tesco and other retailers. Partnership initiative , North Down DPP and PSNI, shopping trolley signage addressing anti-social behaviour.</p>	<p>The leaflet is designed to encourage parents to talk to their children about alcohol and the potential effects. Trolley signage was placed in every shallow trolley to help deal with the issue of underage drinking and its impact on anti social behaviour. Specially designed signage, which will aim to reduce underage drinking and its impact on anti social behaviour and criminal damage are now on every shallow shopping trolley in Bloomfield Shopping Centre, Bangor.</p>
<p>KEEPSAFE AND DROP ZONE – Drug removal and Operational protocol</p>	<p>This ongoing initiative allows concerned citizens to hand in legal and illegal drugs. Information which is relevant concerning the use or distribution of drugs within an area can be passed in confidence to Police. Police will field test the substance to identify/exclude what it is. This method also gives direct access to FASA services.</p>
<p>BEESAFE</p>	<p>750 P7 pupils attended a four day safety event. They were given a range of safety messages aimed at assisting them with their transition into post primary education.</p>

Section 7) Progress towards achieving targets in the Northern Ireland Policing Plan for 2008–2009

Make Communities and Neighbourhoods Safe				
Northern Ireland Policing Plan Target	Apr-Mar 08/09	Apr-Mar 09/10	Change	% Change
1.1.1 To ensure that by 2010/2011, there are fewer than 100,000 crimes recorded.	3476	3368	-108	-3.1%
1.2.1 To reduce the level of more serious violent crime.	59	55	-4	-6.8%
1.3.1 To ensure that by 2010/2011, there are fewer than 6,000 domestic burglaries recorded.	225	223	-2	0.9%
1.4.1 To increase the number of drugs supply gangs frustrated, disrupted or dismantled.	75	99	+24	32.0%
1.5.1 To reduce the number of incidents of anti-social behaviour to ensure a 15% reduction by 31/03/11.	3567	2919	-648	-18.2%
1.6.1 To ensure that by 2010/2011, there are fewer than 27,000 crimes of criminal damage recorded.	877	868	-9	-1.0%
1.7.1 To contribute to reducing the number of people killed or seriously injured on the road.	26	35	9	
1.7.2 To contribute to reducing the number of children killed or seriously injured on the road.	10	4	-6	
1.8.1 To increase the percentage of people who say they feel safe.	Sep 2009 88%			

Build, broaden and sustain confidence in the police

Northern Ireland Policing Plan Target	Apr-Mar 08/09	Apr-Mar 09/10	%	
2.1.1 To increase the percentage of people who are confident in the police service's ability to provide an ordinary day-to-day policing service for all the people of Northern Ireland.	Sep 2009 80%			
2.2.1 To increase the percentage of crime victims satisfied that they have been kept informed regarding their case.	Apr08Mar09 69%			
2.3.1 To increase the percentage of people who think that the police are doing a good job in their area.	Sep09 56%			
2.4.1 To increase the clearance rate by 3% points.	22.9%	29.8%	6.9%	
2.4.2 To increase the clearance rate for racist crimes.	11.1%	27.3%	16.2%	
2.4.3 To increase the clearance rate for homophobic crimes.	0.00%	0.00%	0.00%	
2.4.4 To increase the clearance rate for sectarian crimes.	0.00%	0.00%	0.00%	
2.5.1 To achieve the National Minimum Standard of 90% of emergency (999) calls answered within 10 seconds.	09/10 89.7%			□
2.5.2 To achieve the National Minimum Standard of 90% of non-emergency calls answered within 30 seconds.	09/10 90%			

Policing with the Community

Northern Ireland Policing Plan Target	Apr/Mar 08/09	Apr-Mar 09/10	%	
3.1.1 To refresh the Policing with the Community Strategy by 30 June 2009 and publish by 30 September 2009.	NA			
3.1.2 Chief Officers and Heads of Department to report six monthly to the Policing Board on progress in each of the five key areas.	NA			
3.1.3 To ensure that Neighbourhood Officers work at least 80% of their duty hours on Neighbourhood Policing Duties.				North Down Officers would achieve well in excess of this figure on N'Hood Duties

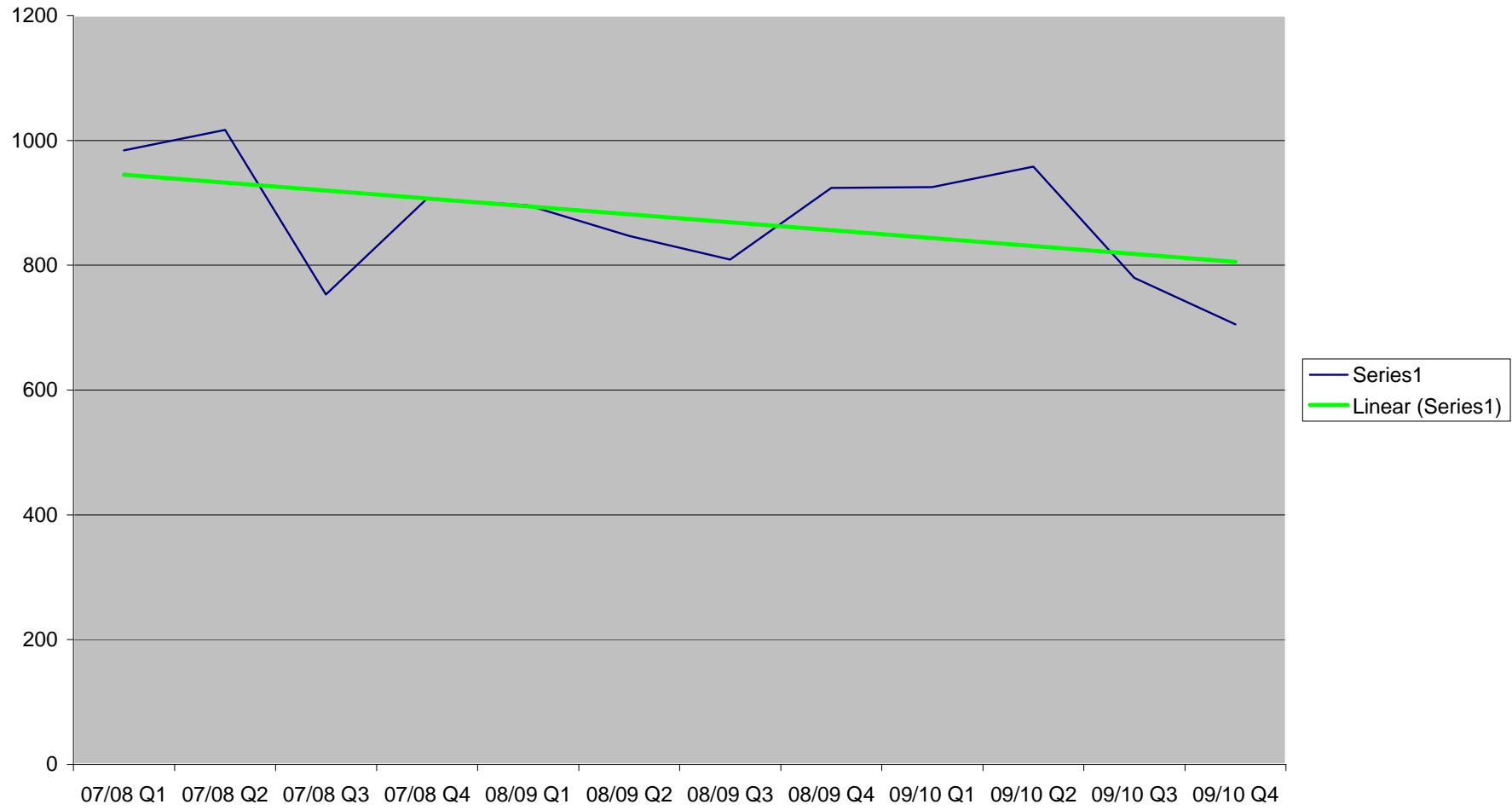
Improve effectiveness and efficiency

Northern Ireland Policing Plan Target	Apr-Mar 08/09	Apr-Mar 09/10	%	
4.1.1 To reduce average sickness levels to 5 days for police officers and police staff by March 2010.	Apl09Oct09 4.81 (Pol) 5.02 (Sta)			
4.2.1 To increase the percentage of custody cases processed within administrative time limits.	C District 77.5%	82.4%	+5.0%pts	
4.2.2 To increase the percentage of bail cases processed within administrative time limits.	C District 82.2%	82.5%	+0.3%pts	
4.2.3 To process 80% of indictable reported cases within administrative time limits.	C District	58.0%	-22.0%pts	
4.2.4 To process 70% of summary reported cases within administrative time limits.	C District	74.8%	+4.8%pts	

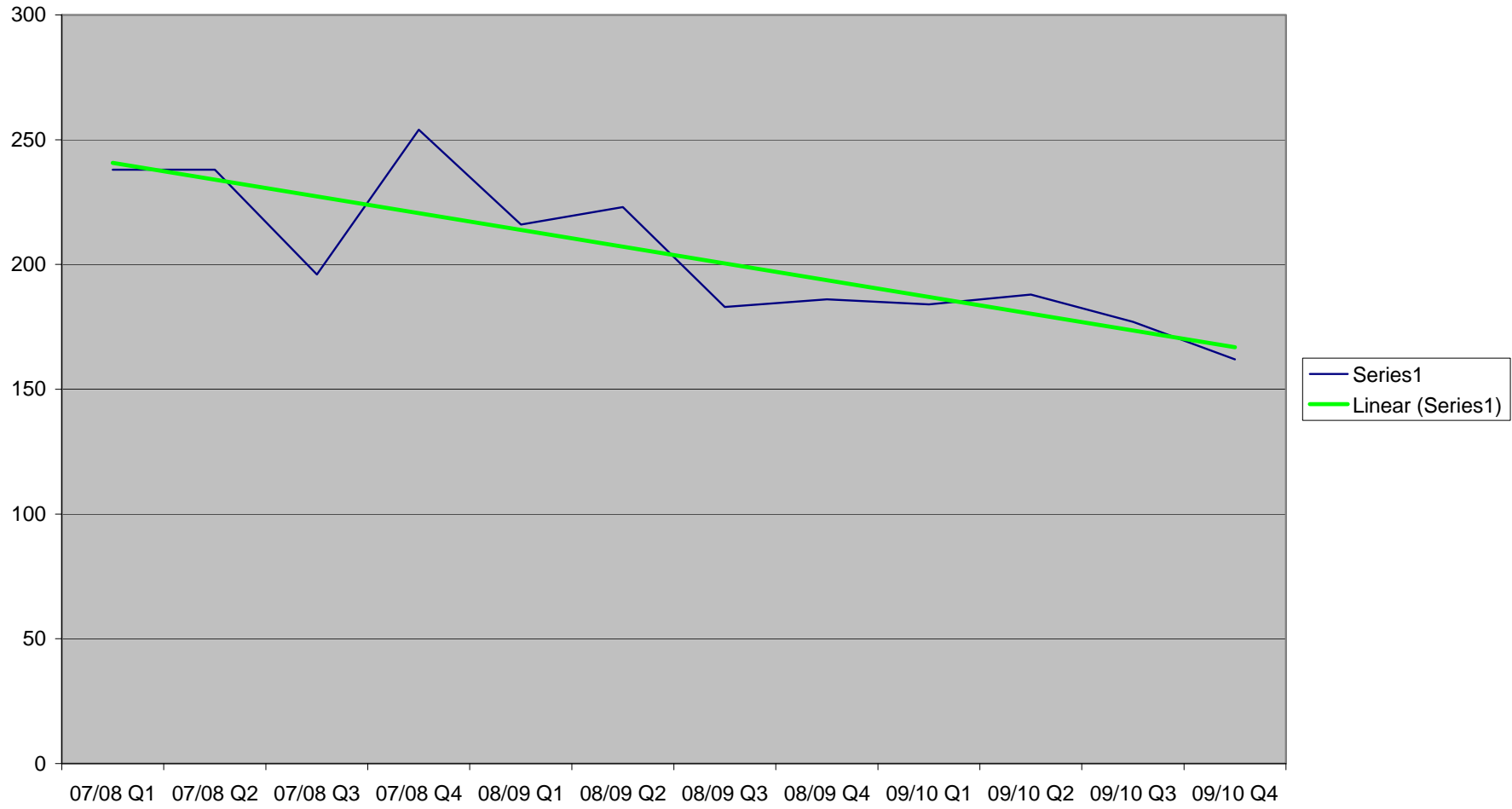
Glossary of Terms

ABC	Acceptable Behaviour Contract	NIACRO	Northern Ireland Association for the Care and Resettlement of Offenders
ABH	Actual Bodily Harm	NICCY	Northern Ireland Commissioner for Children and Young People
ANPR	Automatic Number Plate Recognition	NIHRC	Northern Ireland Human Rights Commission
ARA	Assets Recovery Agency	NIM	National Intelligence Model
ASB(O)	Anti-Social Behaviour (Order)	NIO	Northern Ireland Office
CID	Criminal Investigation Department	NIPB	Northern Ireland Policing Board
CJI(NI)	Criminal Justice Inspectorate (NI)	NISRA	Northern Ireland Statistics and Research Agency
CPLC	Community Police Liaison Committee	NSIR	National Standard for Incident Recording
CRO	Criminal Records Office	OCTF	Organised Crime Task Force
CSI	Crime Scene Investigator	OCU	Operational Command Unit
CSP	Community Safety Partnership	OPONI	The Office of the Police Ombudsman for Northern Ireland
CSU	Community Safety Unit (NIO)	PACE	Police and Criminal Evidence (Act)
CSU	Central Statistics Unit, PSNI	PCSO	Police Community Support Officer
DCU	District Command Unit	PFNI	Police Federation for Northern Ireland
DPP	District Policing Partnership	PSNI	Police Service of Northern Ireland
FTC	Fatal Traffic Collision	PTR	Part Time Reserve
FTR	Full Time Reserve	RTC	Road Traffic Collision
GBH	Grievous Bodily Harm	SNEN	Single Non-Emergency Number
GIS	Geographical Information System	SOC	Scene of Crime
HVP	High Visibility Patrol	SOCA	Serious Organised Crime Agency
KPI	Key Performance Indicator	TSG	Tactical Support Group
KSI	Killed or Seriously Injured	VFM	Value for Money
LGBT	Lesbian, Gay, Bisexual, Transgender	YCA	Youths Causing Annoyance
MLO	Minority Liaison Officer	YDO	Youth Diversion Officer
NAO	National Audit Office		
NCIS	National Criminal Intelligence Service		

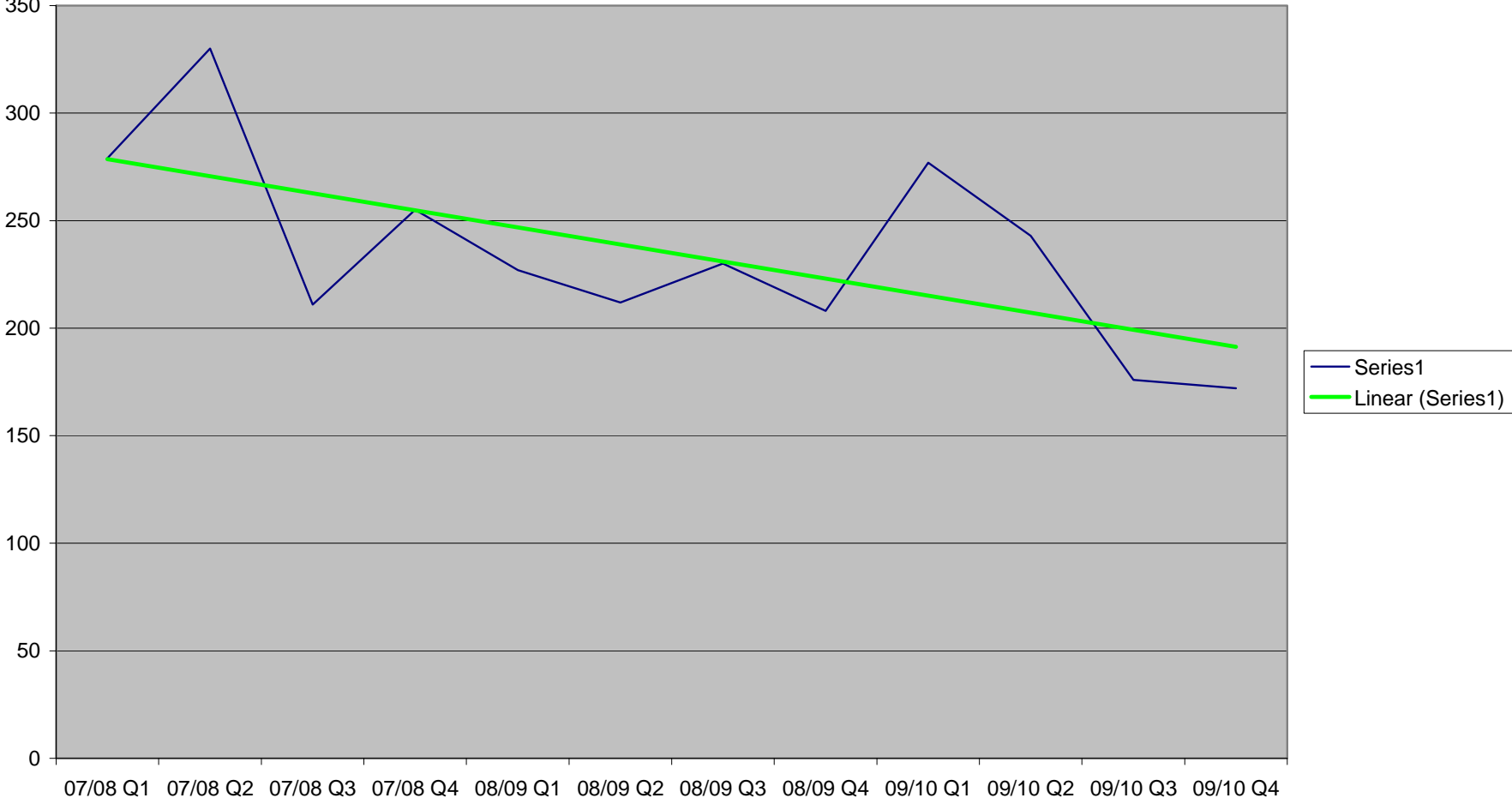
TOTAL CRIME



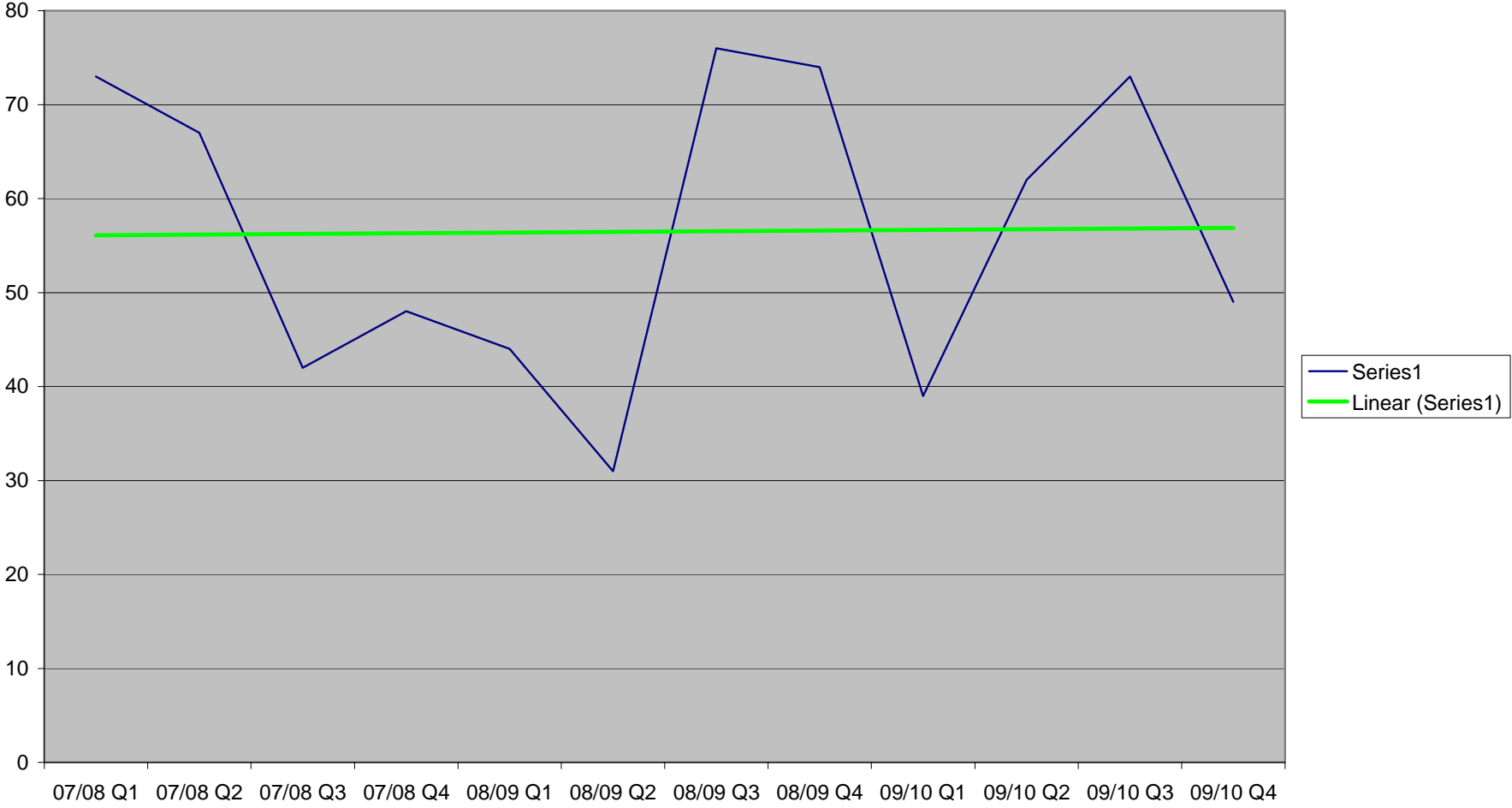
ASSAULTS



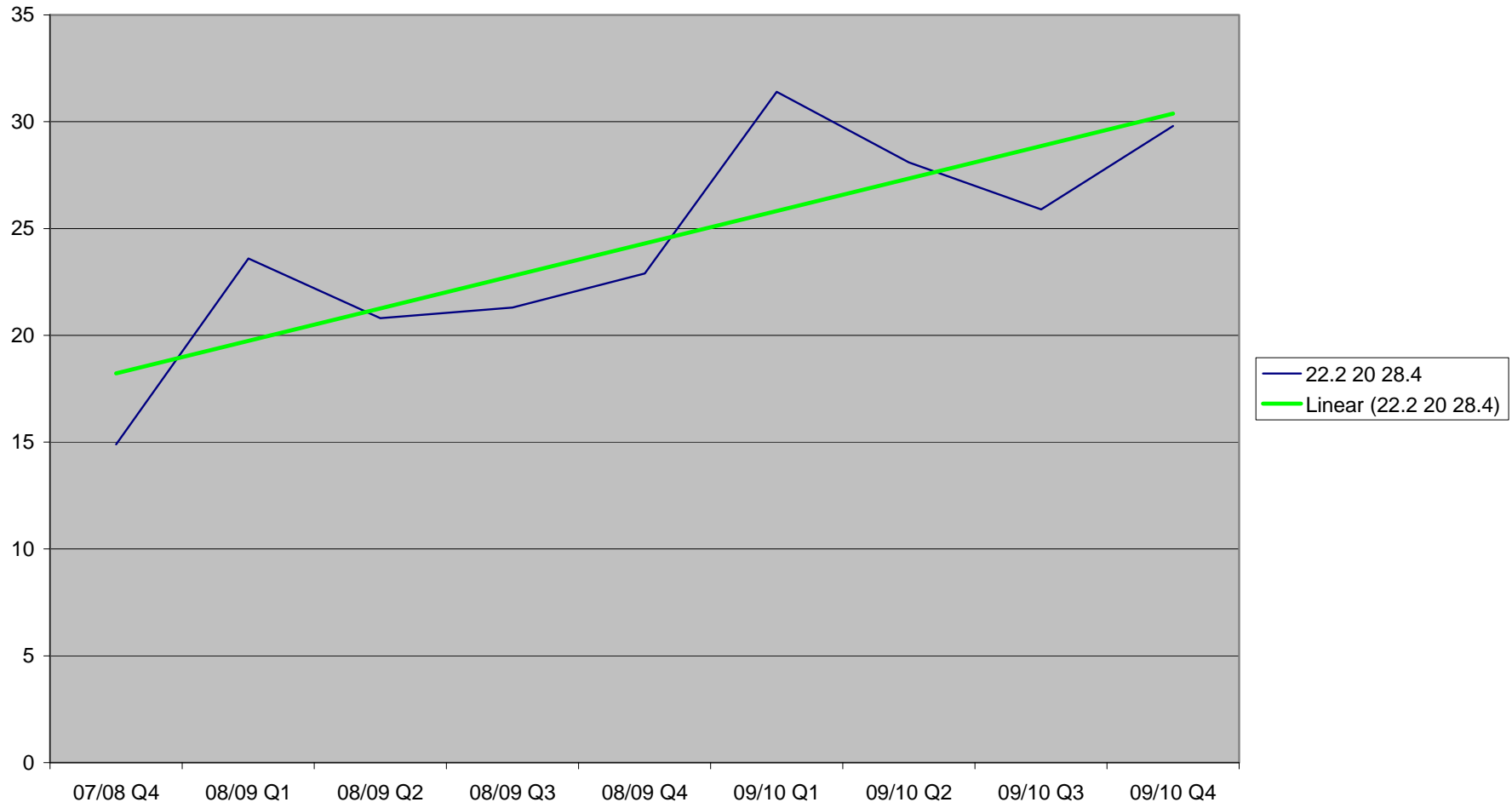
CRIMINAL DAMAGE



DOMESTIC BURGLARY



CLEARANCE RATES



ANTI SOCIAL BEHAVIOUR

