



Making Northern Ireland Safer For Everyone Through Professional, Progressive Policing

Statistical Report No. 5

INJURY ROAD TRAFFIC COLLISIONS & CASUALTIES

1ST APRIL 2006 – 31ST MARCH 2007

A NATIONAL STATISTICS PUBLICATION

Central Statistics Branch, Operational Support Department
Lisnasharragh, 42 Montgomery Road, Belfast, Northern Ireland, BT6 9LD
Web: www.psni.police.uk
Tel: 028 9065 0222 Fax: 028 9092 2998 Email: statistics@psni.police.uk

5. Injury Road Traffic Collisions and Casualties

Summary

| | |
|------------|--|
| Figure 5.1 | Progress Towards the Year 2012 Casualty Reduction Target |
| Figure 5.2 | Injury Road Traffic Collisions 1997/98 – 2006/07 |
| Figure 5.3 | Persons Killed in Injury Road Traffic Collisions 1997/98 – 2006/07 |
| Figure 5.4 | Child casualties (under 16) by Type of Road User 2006/07 |
| Table 5.5 | Injury Road Traffic Collisions and Casualties 1997/98 – 2006/07 |
| Table 5.6 | Injury Road Traffic Collisions Involving Child Casualties (under 16) 1997/98 – 2006/07 |
| Table 5.7 | Most Common Principal Factors in Injury Road Traffic Collisions 2006/07 |
| Table 5.8 | Most Common Principal Factors in Injury Road Traffic Collisions Involving Child Casualties (under 16) 2006/07 |
| Table 5.9 | Injury Road Traffic Collision Casualties by Severity of Injury and Type of Road User 2002/03 – 2006/07 |
| Table 5.10 | Child casualties (under 16) in Injury Road Traffic Collisions by Severity of Injury, Type of Road User and Age Group 2005/06 and 2006/07 |
| Table 5.11 | Casualties in Injury Road Traffic Collisions by Severity of Injury and District Command Unit 2005/06 and 2006/07 |

Injury Road Traffic Collisions - Definitions

A National Statistics Publication

National Statistics are produced to high professional standards set out in the National Statistics Code of Practice. They undergo regular quality assurance reviews to ensure they meet customer needs.

They are produced free from any political interference.

5. Injury Road Traffic Collisions and Casualties

Summary

Overview

- In 2006/07 there were 5,615 injury road traffic collisions that resulted in 9,232 casualties. Just under eleven per cent (983) of the casualties in 2006/07 were children aged under 16.

Number of Collisions

- The total number of injury road traffic collisions increased from 5,098 in 2005/06 to 5,615 in 2006/07 (an increase of 10.1%).
- 13.6% of the collisions resulted in child casualties.

Causes of Collisions

- The most common causes of injury collisions in 2006/07 were 'inattention' (977 collisions), 'excessive speed having regard to conditions' (612 collisions) and 'emerging from a minor road/driveway without care' (583 collisions).

Number and Severity of Casualties

- Of the 9,232 casualties, 128 were killed, 1,194 were seriously injured and 7,910 were slightly injured. Eight of the fatalities were children. Overall there was a 10.2% increase in casualties resulting from injury road traffic collisions (from 8,377 in 2005/06 to 9,232 in 2006/067).
- The overall increase in casualties in Northern Ireland was not reflected across all severities of injury, as there were 6 fewer fatalities (down 4.5%). However there was an increase of 79 serious injuries (up 7.1%) and an increase of 782 slight injuries (up 11.0%) in 2006/07 compared with the previous year.

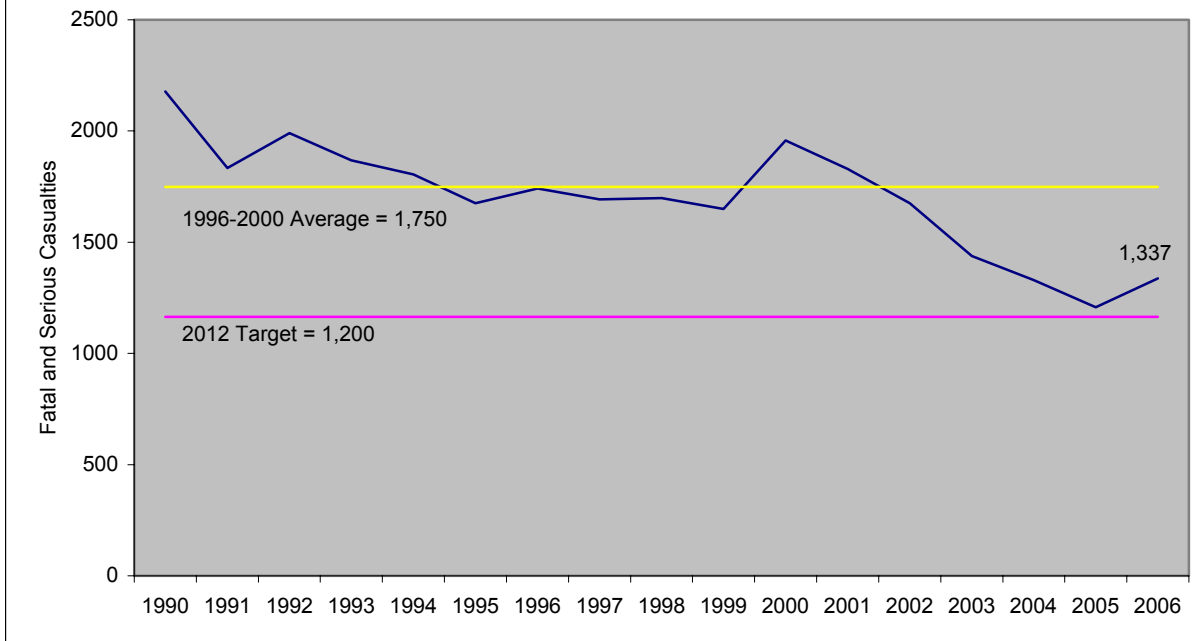
Casualties by Type of Road User

- In 2006/07 drivers of motor vehicles were the single largest casualty class, accounting for just over half (50.7%) of all casualties, followed by passengers (33.8%), pedestrians (8.4%), motor cyclists (4.5%) and pedal cyclists (1.7%).
- Two thirds (67.2%) of all child casualties were passengers, 25.1% were pedestrians and a further 5.4% were pedal cyclists.

The Casualty Reduction Target for 2012

- The Northern Ireland Road Safety Strategy was introduced in 2002 with the aim of achieving a one third reduction in the number of deaths and serious injuries on Northern Ireland's roads by 2012 (based on the average number of fatal & serious injuries between the years of 1996 and 2000). Progress towards achieving that target is shown in Figure 5.1. (Please note that this chart is based on calendar year statistics).

Figure 5.1: The Year 2012 Casualty Reduction Target



¹ Based on calendar year figures.

Figure 5.2: Injury Road Traffic Collisions 1997/98 - 2006/07

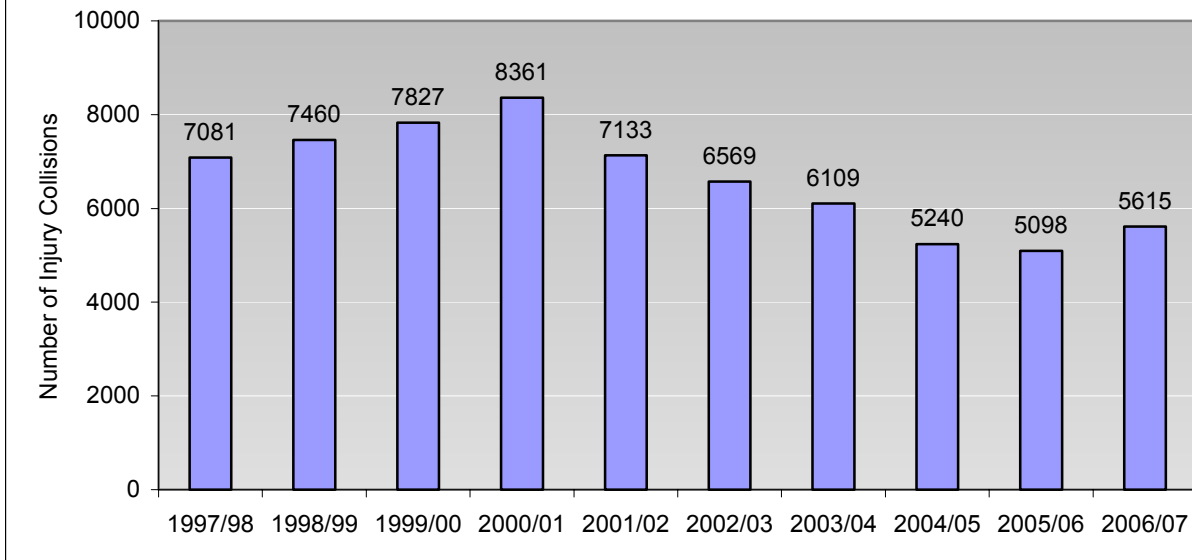


Figure 5.3 Persons Killed in Injury Road Traffic Collisions 1997/98 - 2006/07

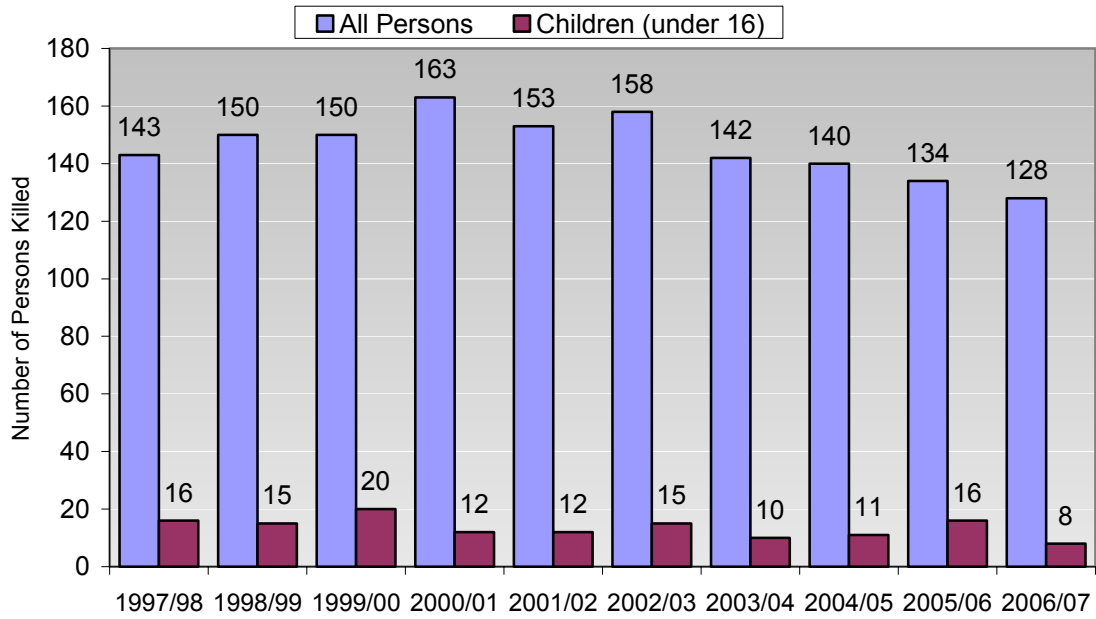


Figure 5.4: Child Casualties (under 16) by Type of Road User 2006/07

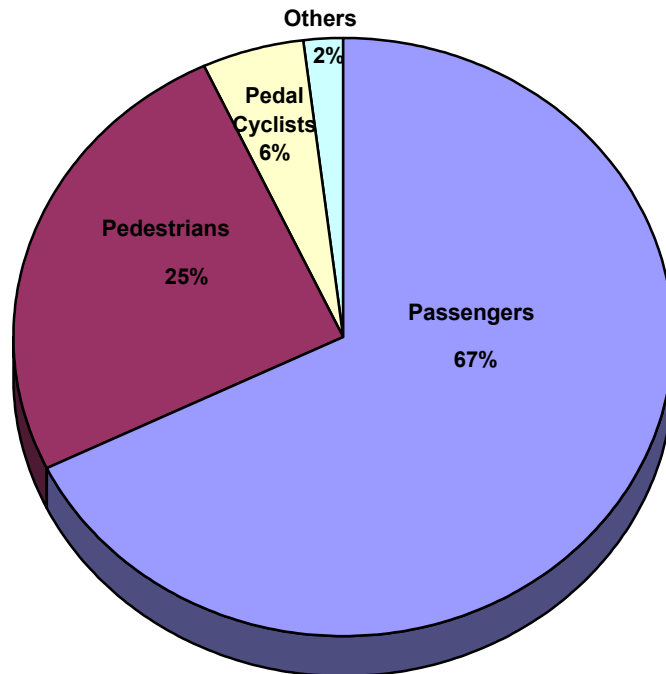


Table 5.5: Injury Road Traffic Collisions and Casualties 1997/98 – 2006/07

| | Number of Injury Collisions | Casualties | | | |
|---------|-----------------------------|------------|-------------------|------------------|------------------|
| | | Killed | Seriously Injured | Slightly Injured | Total Casualties |
| 1997/98 | 7,081 | 143 | 1,526 | 10,912 | 12,581 |
| 1998/99 | 7,460 | 150 | 1,462 | 11,682 | 13,294 |
| 1999/00 | 7,827 | 150 | 1,573 | 12,170 | 13,893 |
| 2000/01 | 8,361 | 163 | 1,801 | 12,620 | 14,584 |
| 2001/02 | 7,133 | 153 | 1,638 | 10,812 | 12,603 |
| 2002/03 | 6,569 | 158 | 1,487 | 9,901 | 11,546 |
| 2003/04 | 6,109 | 142 | 1,258 | 9,022 | 10,422 |
| 2004/05 | 5,240 | 140 | 1,128 | 7,478 | 8,746 |
| 2005/06 | 5,098 | 134 | 1,115 | 7,128 | 8,377 |
| 2006/07 | 5,615 | 128 | 1,194 | 7,910 | 9,232 |

Table 5.6: Injury Road Traffic Collisions Involving Child Casualties (under 16) 1997/98 – 2006/07

| | Number of Injury Collisions | Child Casualties | | | |
|---------|-----------------------------|------------------|-------------------|------------------|------------------|
| | | Killed | Seriously Injured | Slightly Injured | Total Casualties |
| 1997/98 | 1,398 | 16 | 248 | 1,488 | 1,752 |
| 1998/99 | 1,472 | 15 | 218 | 1,641 | 1,874 |
| 1999/00 | 1,402 | 20 | 201 | 1,546 | 1,767 |
| 2000/01 | 1,376 | 12 | 226 | 1,566 | 1,804 |
| 2001/02 | 1,201 | 12 | 219 | 1,297 | 1,528 |
| 2002/03 | 1,039 | 15 | 173 | 1,248 | 1,436 |
| 2003/04 | 947 | 10 | 158 | 1,086 | 1,254 |
| 2004/05 | 790 | 11 | 124 | 873 | 1,008 |
| 2005/06 | 701 | 16 | 127 | 752 | 895 |
| 2006/07 | 762 | 8 | 128 | 847 | 983 |

Table 5.7: Most Common Principal Factors in Injury Road Traffic Collisions - 2006/07

| Principal Factor | Number of Injury Collisions | Casualties | | | |
|--|-----------------------------|------------|-------------------|------------------|------------------|
| | | Killed | Seriously Injured | Slightly Injured | Total Casualties |
| Inattention | 977 | 8 | 113 | 1448 | 1569 |
| Excessive speed having regard to conditions | 612 | 40 | 265 | 810 | 1115 |
| Emerging from minor road/driveway without care | 583 | 4 | 98 | 912 | 1014 |
| Driving too close | 532 | 1 | 21 | 875 | 897 |
| Alcohol or drugs (All road users) | 365 | 28 | 131 | 447 | 606 |
| Turning right w/o care | 289 | 2 | 56 | 464 | 522 |
| Pedestrian heedless of traffic | 246 | 9 | 63 | 188 | 260 |
| Overtaking w/o care | 238 | 6 | 82 | 353 | 441 |

Table 5.8: Most Common Principal Factors in Injury Road Traffic Collisions Involving Child Casualties (under 16) 2006/07

| Principal Factor | Number of Injury Collisions | Child Casualties | | | |
|--|-----------------------------|------------------|-------------------|------------------|------------------|
| | | Killed | Seriously Injured | Slightly Injured | Total Casualties |
| Inattention | 132 | 0 | 15 | 158 | 173 |
| Pedestrian heedless of traffic | 97 | 3 | 25 | 70 | 98 |
| Excessive speed having regard to conditions | 70 | 2 | 13 | 82 | 97 |
| Emerging from minor road/driveway without care | 64 | 0 | 4 | 85 | 89 |
| Driving too close | 59 | 0 | 0 | 94 | 94 |

Table 5.9: Injury Road Traffic Collision Casualties by Severity of Injury and Type of Road User 2002/03 – 2006/07

| Type of Road User ¹ | 2002/03 | 2003/04 | 2004/05 | 2005/06 | 2006/07 |
|--------------------------------|---------|---------|---------|---------|---------|
| Fatalities: | | | | | |
| Pedestrians | 26 | 29 | 24 | 25 | 23 |
| Drivers of motor vehicles | 62 | 54 | 62 | 63 | 47 |
| Motor cyclists | 21 | 17 | 24 | 12 | 18 |
| Pedal cyclists | 3 | 2 | 2 | 4 | 1 |
| Passengers | 43 | 37 | 26 | 30 | 38 |
| Pillion passengers | 1 | 1 | 1 | 0 | 0 |
| Other road users | 2 | 2 | 1 | 0 | 1 |
| Totals | 158 | 142 | 140 | 134 | 128 |
| Serious Injuries: | | | | | |
| Pedestrians | 236 | 205 | 180 | 198 | 190 |
| Drivers of motor vehicles | 643 | 522 | 479 | 467 | 519 |
| Motor cyclists | 166 | 145 | 151 | 126 | 135 |
| Pedal cyclists | 27 | 32 | 27 | 30 | 30 |
| Passengers | 395 | 334 | 275 | 283 | 300 |
| Pillion passengers | 14 | 8 | 9 | 6 | 8 |
| Other road users | 6 | 12 | 7 | 5 | 12 |
| Totals | 1,487 | 1,258 | 1,128 | 1,115 | 1,194 |
| Slight Injuries: | | | | | |
| Pedestrians | 607 | 569 | 474 | 484 | 567 |
| Drivers of motor vehicles | 5,073 | 4,580 | 3,905 | 3,754 | 4,115 |
| Motor cyclists | 284 | 305 | 292 | 257 | 259 |
| Pedal cyclists | 141 | 155 | 131 | 120 | 130 |
| Passengers | 3,739 | 3,378 | 2,633 | 2,473 | 2,787 |
| Pillion passengers | 19 | 12 | 10 | 12 | 21 |
| Other road users | 38 | 23 | 33 | 28 | 31 |
| Totals | 9,901 | 9,022 | 7,478 | 7,128 | 7,910 |
| All Casualties: | | | | | |
| Pedestrians | 869 | 803 | 678 | 707 | 780 |
| Drivers of motor vehicles | 5,778 | 5,156 | 4,446 | 4,284 | 4,681 |
| Motor cyclists | 471 | 467 | 467 | 395 | 412 |
| Pedal cyclists | 171 | 189 | 160 | 154 | 161 |
| Passengers | 4,177 | 3,749 | 2,934 | 2,786 | 3,125 |
| Pillion passengers | 34 | 21 | 20 | 18 | 29 |
| Other road users | 46 | 37 | 41 | 33 | 44 |
| Totals | 11,546 | 10,422 | 8,746 | 8,377 | 9,232 |

¹ 'Passengers' include pedal cycle passengers. 'Other road users' include drivers/riders and passengers of 'other vehicles' (e.g. tractors, invalid carriages, horse-drawn vehicles).

Table 5.10: Child Casualties (under 16) in Injury Road Traffic Collisions by Severity of Injury, Type of Road User and Age Group 2005/06 and 2006/07

| Type of Road User ¹ | 2005/06 | | | | 2006/07 | | | |
|--------------------------------|---------|--------|---------|--------|---------|--------|---------|--------|
| | Under 5 | 5 – 10 | 11 – 15 | Totals | Under 5 | 5 – 10 | 11 – 15 | Totals |
| Fatalities | | | | | | | | |
| Pedestrians | 1 | 1 | 5 | 7 | 1 | 1 | 2 | 4 |
| Pedal cyclists | 0 | 3 | 0 | 3 | 0 | 0 | 0 | 0 |
| Passengers | 0 | 1 | 3 | 4 | 2 | 2 | 0 | 4 |
| Others | 0 | 0 | 2 | 2 | 0 | 0 | 0 | 0 |
| Totals | 1 | 5 | 10 | 16 | 3 | 3 | 2 | 8 |
| Serious Injuries | | | | | | | | |
| Pedestrians | 10 | 21 | 34 | 65 | 14 | 24 | 20 | 58 |
| Pedal cyclists | 0 | 4 | 4 | 8 | 0 | 6 | 6 | 12 |
| Passengers | 4 | 23 | 20 | 47 | 10 | 16 | 22 | 48 |
| Others | 0 | 1 | 6 | 7 | 0 | 0 | 10 | 10 |
| Totals | 14 | 49 | 64 | 127 | 24 | 46 | 58 | 128 |
| Slight Injuries | | | | | | | | |
| Pedestrians | 24 | 60 | 86 | 170 | 25 | 70 | 90 | 185 |
| Pedal cyclists | 3 | 24 | 11 | 38 | 1 | 21 | 19 | 41 |
| Passengers | 112 | 195 | 229 | 536 | 144 | 244 | 221 | 609 |
| Others | 1 | 0 | 7 | 8 | 0 | 3 | 9 | 12 |
| Totals | 140 | 279 | 333 | 752 | 170 | 338 | 339 | 847 |
| All Child Casualties | | | | | | | | |
| Pedestrians | 35 | 82 | 125 | 242 | 40 | 95 | 112 | 247 |
| Pedal cyclists | 3 | 31 | 15 | 49 | 1 | 27 | 25 | 53 |
| Passengers | 116 | 219 | 252 | 587 | 156 | 262 | 243 | 661 |
| Others | 1 | 1 | 15 | 17 | 0 | 3 | 19 | 22 |
| Totals | 155 | 333 | 407 | 895 | 197 | 387 | 399 | 983 |

¹ 'Passengers' include pedal cycle passengers.

'Others' include drivers of motor vehicles, riders and pillion passengers on motor cycles and drivers/riders and passengers of 'other vehicles' (e.g. tractors, invalid carriages and horse-drawn vehicles etc.).

Table 5.11: Casualties in Injury Road Traffic Collisions by Severity of Injury and District Command Unit 2005/06 and 2006/07

| | 2005/06 | | | | 2006/07 | | | |
|-------------------------------|------------|-------------------|------------------|--------------|------------|-------------------|------------------|--------------|
| | Killed | Seriously Injured | Slightly Injured | Total | Killed | Seriously Injured | Slightly Injured | Total |
| Antrim | 6 | 24 | 190 | 220 | 11 | 50 | 293 | 354 |
| Ards | 6 | 48 | 310 | 364 | 4 | 50 | 345 | 399 |
| Armagh | 4 | 52 | 272 | 328 | 7 | 57 | 271 | 335 |
| Ballymena | 8 | 55 | 250 | 313 | 4 | 49 | 271 | 324 |
| Ballymoney | 3 | 16 | 89 | 108 | 1 | 27 | 121 | 149 |
| Banbridge | 1 | 28 | 206 | 235 | 3 | 34 | 184 | 221 |
| Carrickfergus | 0 | 24 | 129 | 153 | 1 | 27 | 148 | 176 |
| Castlereagh | 3 | 11 | 189 | 203 | 5 | 21 | 268 | 294 |
| Coleraine | 4 | 37 | 150 | 191 | 13 | 31 | 166 | 210 |
| Cookstown | 4 | 37 | 156 | 197 | 4 | 29 | 153 | 186 |
| Craigavon | 2 | 49 | 352 | 403 | 2 | 41 | 322 | 365 |
| Down | 6 | 32 | 236 | 274 | 7 | 46 | 204 | 257 |
| Dungannon and South Tyrone | 6 | 51 | 277 | 334 | 8 | 49 | 210 | 267 |
| East Belfast | 1 | 34 | 323 | 358 | 1 | 30 | 408 | 439 |
| Fermanagh | 13 | 61 | 275 | 349 | 16 | 55 | 277 | 348 |
| Foyle | 7 | 52 | 370 | 429 | 0 | 26 | 258 | 284 |
| Larne | 2 | 24 | 82 | 108 | 2 | 26 | 120 | 148 |
| Limavady | 6 | 41 | 199 | 246 | 2 | 36 | 176 | 214 |
| Lisburn | 7 | 87 | 513 | 607 | 7 | 74 | 575 | 656 |
| Magherafelt | 10 | 36 | 168 | 214 | 1 | 30 | 218 | 249 |
| Moyle | 0 | 11 | 51 | 62 | 3 | 12 | 52 | 67 |
| Newry and Mourne | 10 | 30 | 152 | 192 | 7 | 68 | 323 | 398 |
| Newtownabbey | 5 | 45 | 323 | 373 | 3 | 66 | 452 | 521 |
| North Belfast | 2 | 45 | 565 | 612 | 2 | 51 | 493 | 546 |
| North Down | 4 | 40 | 274 | 318 | 3 | 37 | 341 | 381 |
| Omagh | 7 | 36 | 210 | 253 | 3 | 54 | 206 | 263 |
| South Belfast | 2 | 43 | 333 | 378 | 1 | 52 | 480 | 533 |
| Strabane | 0 | 31 | 120 | 151 | 5 | 27 | 150 | 182 |
| West Belfast | 5 | 35 | 364 | 404 | 2 | 39 | 425 | 466 |
| Totals | 134 | 1,115 | 7,128 | 8,377 | 128 | 1,194 | 7,910 | 9,232 |

Injury Road Traffic Collisions - Definitions

Collisions

Collisions involving personal injury occurring on the public highway (including footpaths) in which a vehicle is involved. Collisions are categorised as either 'Fatal', 'Serious' or 'Slight' according to the most severely injured casualty.

Killed

Died within 30 days from injuries received in a collision.

Serious Injury

An injury for which a person is detained in hospital as an 'in-patient', or any of the following injuries whether or not the person is detained in hospital: fractures, concussion, internal injuries, crushings, burns, severe cuts and lacerations or severe general shock requiring medical treatment.

Slight Injury

An injury of a minor character such as a sprain, bruise or cut not judged to be severe, or slight shock requiring roadside attention.

Casualty

A person who sustains a slight, serious or fatal injury.

Children

Persons under 16 years of age.

Drivers of motor vehicles

Drivers of hackneys, cars, motor caravans, LGVs, HGVs, cars used as taxis, minibuses and buses.

Motorcyclists

Drivers/riders of mopeds and motorcycles. Includes riders of two-wheeled motor vehicles, motorcycle combinations, scooters and mopeds.

Pedal cyclists

Drivers/riders of pedal cycles. Includes children riding toy cycles on the carriageway and the first rider of a tandem.

Passengers

Occupants of vehicles other than the driver or rider. Passengers of hackneys, cars, motor caravans, LGVs, HGVs, cars used as taxis, minibuses, buses and pedal cycles.

Pillion passengers

Passenger on a moped or motorcycle.

Other road users

Drivers and passengers of invalid/3 wheelers, tractors, ridden horses, other motor vehicles and other non motor vehicles.

Pedestrians

Include:

- Children on scooters, roller skates or skateboards;
- Children riding toy cycles on the footpath;
- Persons pushing bicycles or other vehicles or operating pedestrian-controlled vehicles;
- Persons leading or herding animals;
- Occupants of prams or wheelchairs;
- People who alight safely from vehicles and are subsequently injured;
- Persons pushing or pulling a vehicle;
- Persons other than cyclists holding on to the back of a moving vehicle.