

Police Service of Northern Ireland

# Domestic Abuse Incidents and Crimes Recorded by the Police in Northern Ireland: Quarterly Update to 30 June 2011

Published 25 August 2011

# Domestic abuse incidents and crimes recorded by the police in Northern Ireland: Quarterly update to 30 June 2011

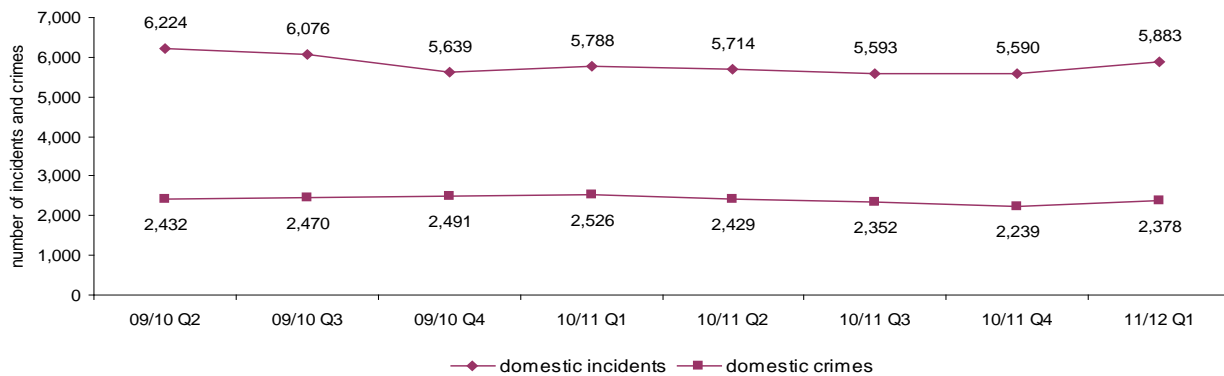
Published 25 August 2011

This quarterly bulletin presents the most recent statistics relating to domestic abuse incidents and crimes recorded by the police to 30<sup>th</sup> June 2011. Figures were compiled on 23 August 2011. Those figures relating to the current 2011/12 financial year are provisional and will be subject to change until the finalised 2011/12 data is published in May 2012.

## MAIN POINTS

- When examined on a quarterly basis, domestic abuse incidents have shown a general downward trend from a level of 6,224 in Quarter 2 2009/10 to 5,590 in Quarter 4 2010/11, an overall fall of 634 (-10.2%). However the number of domestic abuse incidents recorded in the most recent quarter has risen to 5,883, an increase of 293 (5.2%) on the previous quarter and is the third highest quarterly figure in the last two years.
- Domestic abuse crimes have shown small fluctuations in the last eight quarters, ranging from 2,239 recorded in Quarter 4 2010/11 to 2,526 recorded in Quarter 1 2010/11. The figure for the most recent quarter shows an increase of 139 offences on the previous quarter, but remains the third lowest quarterly figure in the last two years.
- The domestic abuse sanction detection rate for the latest 12 months is 46.3%, 2.6 percentage points higher than the rate for the previous 12 months.

**Figure 1 Domestic abuse incidents and crimes: quarterly totals over the two years to June 2011**



**Table 1 Incidents with a domestic abuse motivation recorded in the year to June 2011 compared with the previous year**

	Numbers and percentages		
	12 months to June 2010	12 months to June 2011	% change between years
Domestic abuse incidents	23,727	22,780	-4.0

**Table 2 Crimes with a domestic abuse motivation recorded in the year to June 2011 compared with the previous year**

Offence group	Numbers and percentages		
	12 months to June 2010	12 months to June 2011	% change between years
Violence against the person offences	6,751	6,572	-2.7
<i>Violence against the person – with injury</i>	3,357	3,303	-1.6
<i>Violence against the person – without injury</i>	3,394	3,269	-3.7
Property crime	1,816	1,715	-5.6
Breach of non-molestation order	1,036	862	-16.8
All other offences	316	249	-21.2
<b>Total recorded crime (domestic abuse motivation) – all offences</b>	<b>9,919</b>	<b>9,398</b>	<b>-5.3</b>

**Table 3 Sanction detection rates for crimes with a domestic abuse motivation in the 12 months to June 2011 compared with the previous year**

Offence group	Percentages		
	12 months to June 2010	12 months to June 2011	% point change
Violence against the person offences	39.8	42.2	2.5
<i>Violence against the person – with injury</i>	45.0	46.8	1.8
<i>Violence against the person – without injury</i>	34.6	37.6	3.0
Property crime	47.1	49.2	2.1
Breach of non-molestation order	68.9	74.9	6.0
All other offences	24.1	32.9	8.9
<b>Total recorded crime (domestic abuse motivation) – all offences</b>	<b>43.7</b>	<b>46.3</b>	<b>2.6</b>

## NOTES

Unlike the Northern Ireland Crime Survey (NICS), police recorded crime figures do not include crimes that have not been reported to the police or those that the police decide not to record, but they do cover crimes against those aged under 16, organisations such as businesses, and crimes 'against the state' i.e. with no immediate victim (e.g. possession of drugs).

Like any administrative data, police recorded crime statistics are affected by the rules governing the recording of data, systems in place and operational decisions in respect of the allocation of resources. More proactive policing in a given area could lead to an increase in crimes recorded without any real change in underlying crime trends. These issues need to be taken into account when using these data.

### Time periods covered

The figures in this bulletin are presented on a financial year basis and, in this context:

- Quarter 1 refers to the months April, May and June
- Quarter 2 refers to the months July, August and September
- Quarter 3 refers to the months October, November and December
- Quarter 4 refers to the months January, February and March

### Data accuracy

Figures within the current year to date are provisional and will be subject to change until finalised figures for the full financial year are published in May 2012. While crimes included within the police recorded crime statistics for Northern Ireland are individually checked for compliance with the Home Office Counting Rules by the PSNI's Statistics Branch, the identification of a domestic abuse motivation is derived from a motivation 'tick box' on the system used by PSNI to record crime. The motivation is identified and completed by a police officer or member of police staff for each such reported incident or crime. The correct application of a domestic abuse motivation for all such incidents/crimes is not quality assured by the PSNI's Statistics Branch, but quarterly audits and data quality checks are conducted in an attempt to ensure that any under or over-recording is corrected.

### Additional data

This bulletin shows a Northern Ireland level summary of domestic abuse incidents and crimes recorded by the police in the 12 months to June 2011. Additional figures to accompany this bulletin are published in a spreadsheet: [http://www.psni.police.uk/quarterly\\_domestic\\_abuse\\_update\\_apr-jun\\_11\\_12.xls](http://www.psni.police.uk/quarterly_domestic_abuse_update_apr-jun_11_12.xls).

This spreadsheet contains a pivot table providing statistics on domestic abuse incidents, domestic abuse crimes, sanction detections (numbers) and sanction detection rates (%). Each of these data measures is available:

- at Northern Ireland level as well as for each policing district and policing area;
- for a range of crime types; and
- for a range of time periods (previous and current rolling 12 months, previous and current financial years to the end of the latest quarter and each of the last 8 quarters).

The pivot table allows the user to manipulate the data, select the data they are most interested in and carry out calculations on the data.

The data records displayed in the pivot table are also available in this spreadsheet.

### Further information

Annual figures on domestic abuse incidents and crimes from 2004/05 to 2010/11 are available in the publication Trends in Domestic Abuse Incidents and Crimes Recorded by the Police in Northern Ireland 1998/99 to 2010/11, available at:

[http://www.psni.police.uk/domestic\\_abuse\\_incidents\\_and\\_crimes\\_in\\_northern\\_ireland\\_2004-05\\_to\\_2010-11.pdf](http://www.psni.police.uk/domestic_abuse_incidents_and_crimes_in_northern_ireland_2004-05_to_2010-11.pdf)

Further details on Police Recorded Crime statistics, including those with a domestic abuse motivation, are available in the [User Guide to Police Recorded Crime Statistics in Northern Ireland](#). This is a reference guide with explanatory notes regarding the issues and classifications which are key to the production and presentation of police recorded crime statistics. The [definition of domestic abuse](#) upon which these statistics are based is also available in this user guide and on the PSNI Internet site.

Copies of other PSNI publications are available from the PSNI Internet site:

[http://www.psni.police.uk/index/updates/updates\\_statistics.htm](http://www.psni.police.uk/index/updates/updates_statistics.htm)

For further information about the police recorded crime statistics for Northern Ireland, or to contact the PSNI Responsible Statistician please:

Email: [statistics@psni.police.uk](mailto:statistics@psni.police.uk);

Write to: Statistics Branch, Lisnasharragh, 42 Montgomery Road, Belfast, BT6 9LD; or

Telephone: 0845 600 8000 ext 24135, Fax: 028 9092 2998