


Internet Explorer

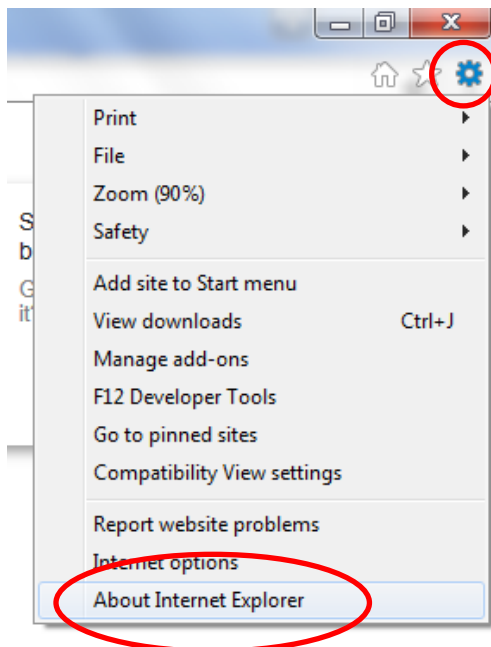
Internet Explorer 11

To start Internet Explorer click on the icon below



The procedure for identifying the version of Internet Explorer on your computer is as follows:

1. Start Internet Explorer
2. Move the cursor to the top right corner of the window and click the gear  icon
3. Select "About Internet Explorer" from the drop down menu.



Alternatively, you can click "Help" in the menu bar and select "About Internet Explorer" from the menu.

Useful tip: If you can't see the "File, Edit, View, Help" menu bar, press the Alt key to make the menu bar visible.


As shown below, in the "About Internet Explorer" window, you can view the Version number.

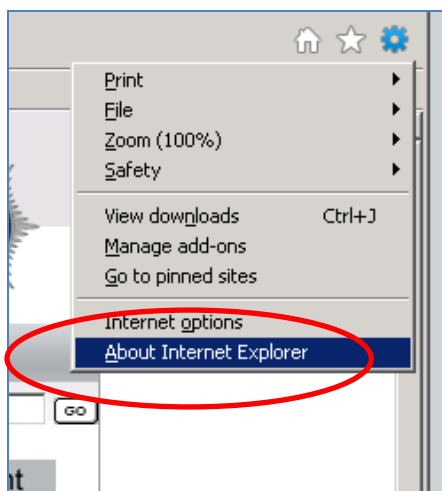
Internet Explorer on your computer can be set to automatically install new versions when they become available. This can be done by checking the box to "***Install new versions automatically***" in the "About Internet Explorer" window.



Internet Explorer 9

To view the "About" page in Internet Explorer:

1. At the top right of the program window, click the gear  icon
2. Select "About Internet Explorer" in the drop down menu.



The version number will be displayed in the "About Internet Explorer" window, see example below.



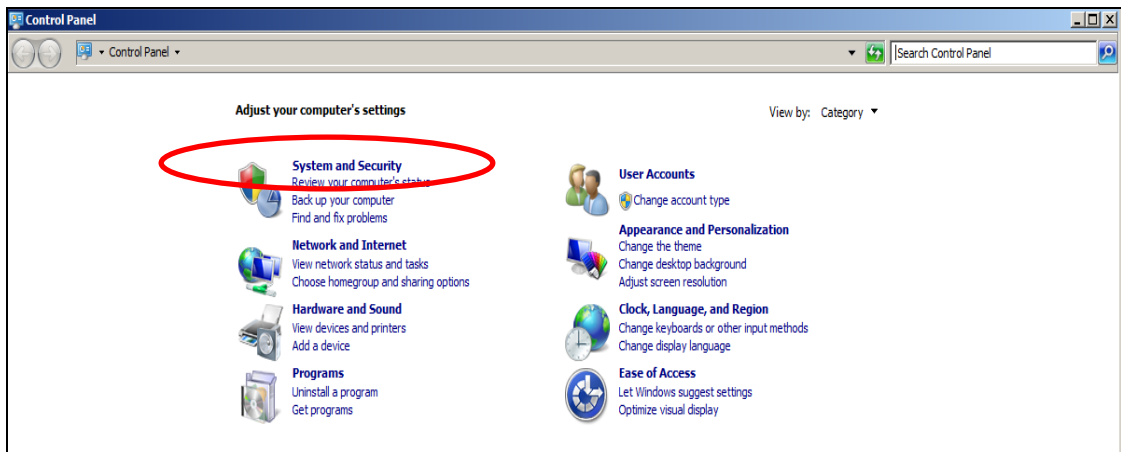
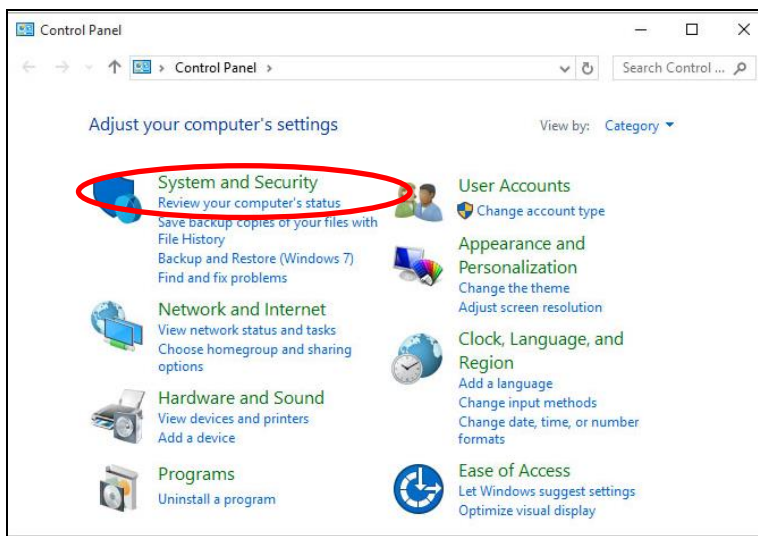
Updating your Internet Explorer Browser

Microsoft updates Internet Explorer using its Windows update feature. If you are regularly installing the latest Windows updates from Microsoft then you should be on the latest version of Internet Explorer.

Note Windows 10 automatically updates Internet Explorer.

Follow the procedure below to manually trigger an update of the Internet Explorer Browser:

1. Open the Control Panel. The appearance of the resulting screen depends on the version of the operating system and some of your computer's configuration details. The screen shot below is an example of the possible appearance.



2. Click on "System and Security"
3. Click on "Windows Update" icon:



Windows Update

Turn automatic updating on or off | [Check for updates](#) | [View installed updates](#)

4. Click the "Check for Updates" option.
5. You will now be prompted to update all or individual applications.