

Police Service of Northern Ireland

# Anti-Social Behaviour Incidents Recorded by the Police in Northern Ireland: Monthly Update to 31 March 2013 (Providing figures for 1<sup>st</sup> April 2012 to 31<sup>st</sup> March 2013)

**Published 9 May 2013**



# Anti-Social Behaviour Incidents Recorded by the Police in Northern Ireland: Monthly Update to 31 March 2013

Published 9 May 2013

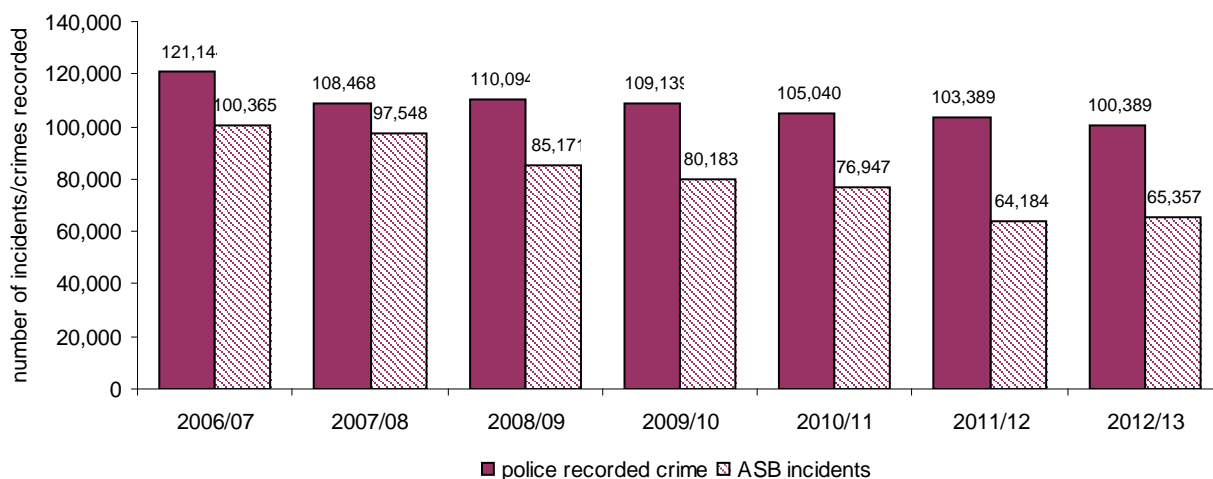
This monthly bulletin presents the most recent statistics on anti-social behaviour incidents recorded by the police for the financial year 2012/13, which runs from 1<sup>st</sup> April 2012 to 31<sup>st</sup> March 2013. Figures were compiled on 25<sup>th</sup> April 2013, using data extracted from the police administrative system on that date. Anti-social behaviour incidents are extracted from an operational system and, as such, are always subject to change. The figures in this bulletin supersede those previously published.

A complete data series dating back to 2006/07 (the year that compilation of anti-social behaviour incidents was introduced), by policing district and policing area is available in the [spreadsheet](#) which accompanies this bulletin.

## OVERALL TRENDS IN ANTI-SOCIAL BEHAVIOUR INCIDENTS

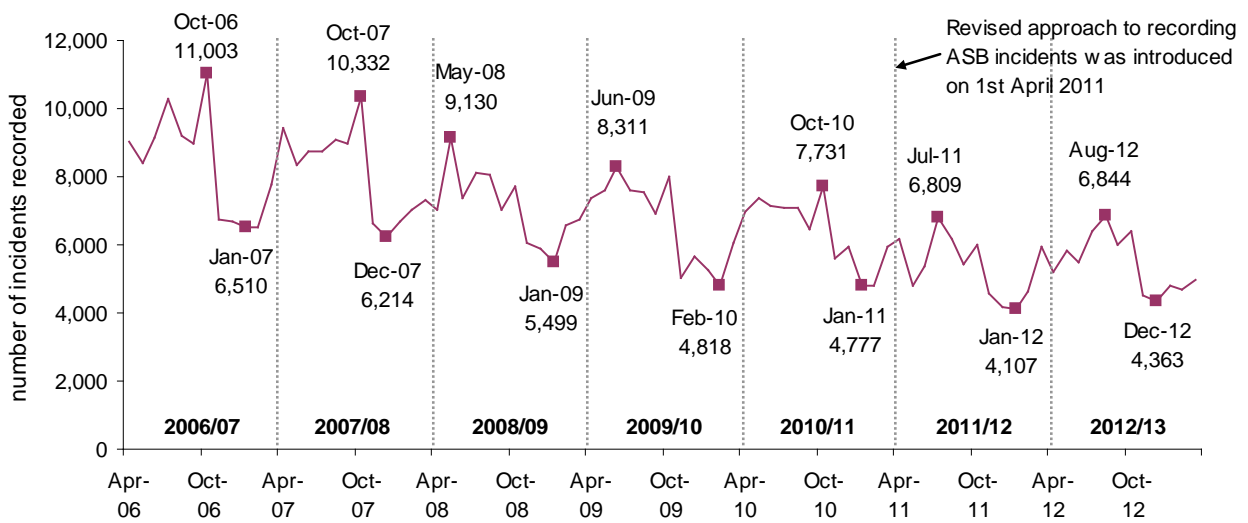
- There has been a general downwards trend in the number of anti-social behaviour incidents recorded since the data series began in 2006/07 (as seen in Figure 1). At a level of 65,357, the number of incidents recorded in 2012/13 is 34.9 per cent lower than the total recorded in 2006/07 (100,365).
- While the number of anti-social behaviour incidents fell year on year between 2006/07 and 2011/12, the latest figures show an increase of 1.8 per cent between 2011/12 and 2012/13.
- The downwards trend since 2006/07 can be seen within each policing district. Five policing districts (A, B, E, F and G) experienced their lowest levels of anti-social behaviour in 2011/12, with the remainder (C, D and H Districts) recording their lowest levels in 2012/13.
- Similarly, the majority of policing areas (18 out of 29) recorded their lowest levels of anti-social behaviour during 2011/12, while the lowest levels in the remaining eleven policing areas occurred in 2012/13. When comparing 2006/07 with 2012/13, decreases range from a fall of 62.1 per cent in Carrickfergus policing area (from 2,842 recorded in 2006/07 to 1,078 in 2012/13) to a fall of 9.6 per cent in West Belfast policing area (from 3,492 recorded in 2006/07 to 3,157 in 2012/13). A complete set of figures for each policing district and area dating back to 2006/07 is available in the financial year pivot table in the [accompanying excel spreadsheet](#).
- Figure 1 shows that ASB incidents have fallen at a faster rate than police recorded crime, falling by 34.9 per cent between 2006/07 and 2012/13, compared with a 17.1 per cent decrease in police recorded crime over the same period.

**Figure 1 Police recorded crime and anti-social behaviour incidents since 2006/07**



- Figure 2 shows the monthly fluctuations in anti-social behaviour incidents recorded during each financial year, although these are becoming less marked over time. The highest and lowest monthly levels are identified in the chart for each financial year. A complete set of figures for each month dating back to April 2006 is available in the [accompanying excel spreadsheet](#).
- Based on the data series available from April 2006, anti-social behaviour incidents tend to show higher levels between February/March and July/August, followed by a decrease in September. An increase between September and October is then followed by a sharp fall in November. Lower levels of anti-social behaviour are recorded between November and February before the number of incidents starts to rise again in February/March.
- A peak in the number of anti-social behaviour incidents is seen each October, although this is not always the highest level recorded during the year.

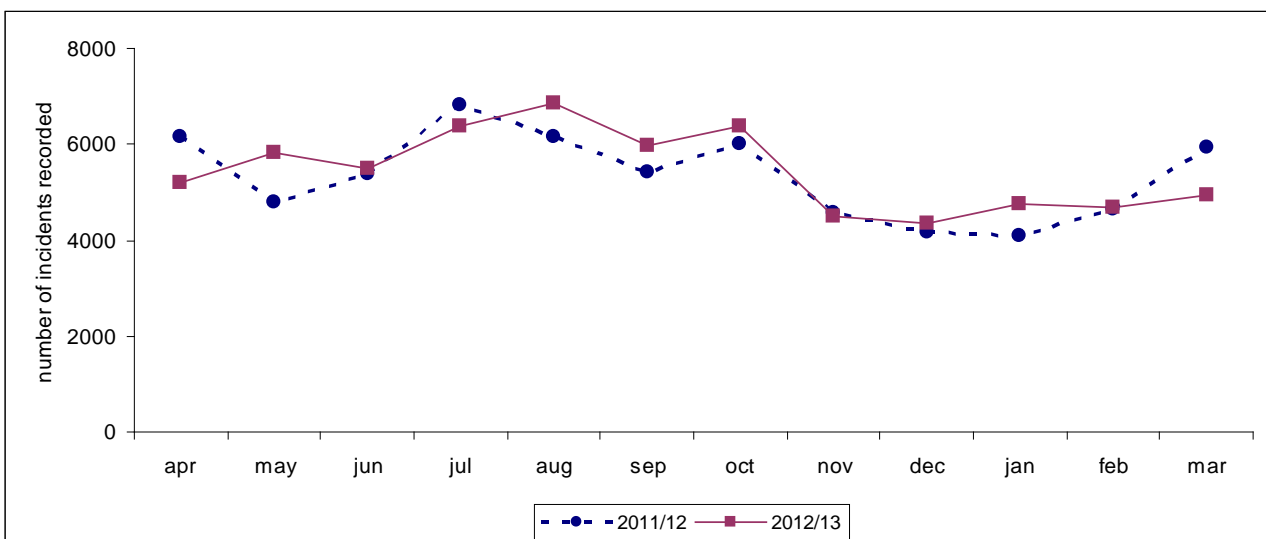
**Figure 2 Total number of anti-social behaviour incidents each month April 2006 to March 2013**



**COMPARISON OF 2012/13 WITH 2011/12**

- Anti-social behaviour incidents rose by 1.8 per cent in 2012/13 when compared with 2011/12. However, Figure 3 shows that trends in anti-social behaviour for 2012/13 have largely mirrored those seen in the comparable month of 2011/12, but at a higher level for five out of the latest twelve months. For the remaining months, three were lower than the comparable month in 2011/12 and four were broadly similar.

**Figure 3 Total number of anti-social behaviour incidents each month April 2011 to March 2013**

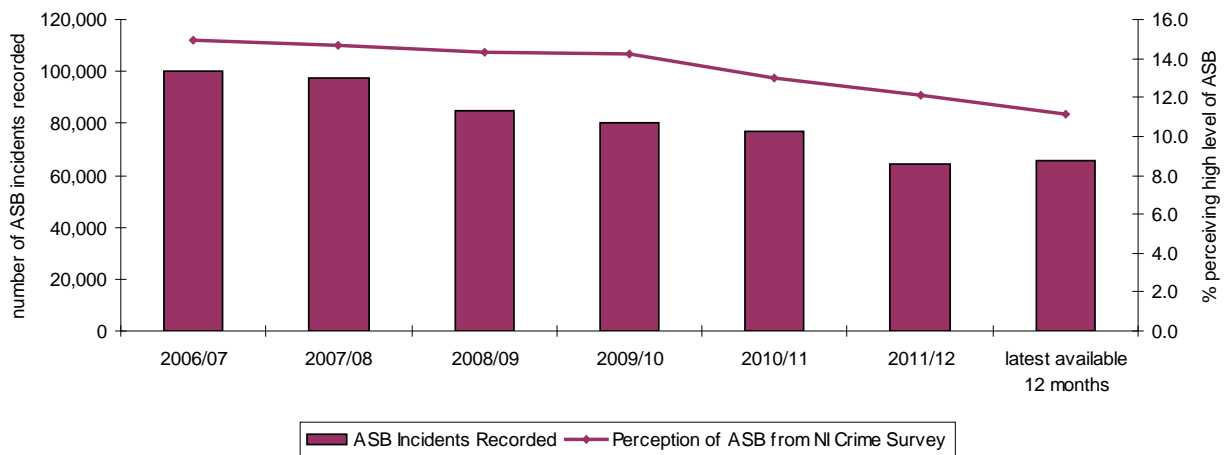


- As shown in Table 1, decreases occurred in C District (-1.8 per cent), D District (-1.9 per cent) and H District (-1.6 per cent) when comparing 2012/13 with 2011/12. A, B, E, F and G policing districts have shown increases, ranging from 1.1 per cent in A District to 5.7 per cent in G District.
- At policing area level the change between 2011/12 and 2012/13 has ranged from a fall of 17.4 per cent in Larne policing area to a rise of 13.3 per cent in Dungannon and South Tyrone policing area.

**COMPARISON WITH PERCEPTIONS OF ANTI-SOCIAL BEHAVIOUR FROM THE NORTHERN IRELAND CRIME SURVEY**

- Respondents to the Northern Ireland Crime Survey are asked to rate how much of a problem different types of anti-social behaviour are in their area. The latest available figures covering the period January to December 2012 show that, at 11.1 per cent, the proportion of respondents who perceived a high level of anti-social behaviour in their area is at its lowest level since 2003/04 (the first year in which the figures were collated), when it stood at 18.1 per cent. Further information on these findings is available from the [Perceptions of Policing, Justice and Anti-Social Behaviour: Quarterly Update to December 2012](#) on the Department of Justice for Northern Ireland Internet site.

**Figure 3 Trends in anti-social behaviour incidents recorded by the police perceptions of anti-social behaviour identified through the Northern Ireland Crime Survey, 2006/07 to latest available<sup>1</sup>**



<sup>1</sup> The latest available figure for the number of ASB incidents recorded by the police is 2012/13, while the latest available figure from the Northern Ireland Crime Survey refers to the period January 2012 to December 2012.

**Table 1 Number of anti-social behaviour incidents 2012/13 compared with 2011/12 by policing district and policing area**

Policing district/area	Anti-Social Behaviour Incidents				Numbers and percentages	
	2011/12	2012/13	change	% change		
North Belfast	4,815	4,854	39	0.8		
West Belfast	3,106	3,157	51	1.6		
<b>A District</b>	<b>7,921</b>	<b>8,011</b>	<b>90</b>	<b>1.1</b>		
East Belfast	2,963	2,978	15	0.5		
South Belfast	6,041	6,477	436	7.2		
<b>B District</b>	<b>9,004</b>	<b>9,455</b>	<b>451</b>	<b>5.0</b>		
Ards	2,394	2,206	-188	-7.9		
Castlereagh	1,529	1,483	-46	-3.0		
Down	1,997	1,993	-4	-0.2		
North Down	2,741	2,824	83	3.0		
<b>C District</b>	<b>8,661</b>	<b>8,506</b>	<b>-155</b>	<b>-1.8</b>		
Antrim	1,696	1,791	95	5.6		
Carrickfergus	1,184	1,078	-106	-9.0		
Lisburn	3,703	3,417	-286	-7.7		
Newtownabbey	2,805	2,923	118	4.2		
<b>D District</b>	<b>9,388</b>	<b>9,209</b>	<b>-179</b>	<b>-1.9</b>		
Armagh	1,106	1,178	72	6.5		
Banbridge	1,376	1,365	-11	-0.8		
Craigavon	2,824	3,066	242	8.6		
Newry & Mourne	2,387	2,393	6	0.3		
<b>E District</b>	<b>7,693</b>	<b>8,002</b>	<b>309</b>	<b>4.0</b>		
Cookstown	1,149	1,045	-104	-9.1		
Dungannon & South Tyrone	1,590	1,802	212	13.3		
Fermanagh	1,830	1,978	148	8.1		
Omagh	1,309	1,382	73	5.6		
<b>F District</b>	<b>5,878</b>	<b>6,207</b>	<b>329</b>	<b>5.6</b>		
Foyle	4,852	5,462	610	12.6		
Limavady	1,201	1,179	-22	-1.8		
Magherafelt	1,091	915	-176	-16.1		
Strabane	1,075	1,134	59	5.5		
<b>G District</b>	<b>8,219</b>	<b>8,690</b>	<b>471</b>	<b>5.7</b>		
Ballymena	2,396	2,137	-259	-10.8		
Ballymoney	723	731	8	1.1		
Coleraine	2,814	3,117	303	10.8		
Larne	1,030	851	-179	-17.4		
Moyle	434	441	7	1.6		
<b>H District</b>	<b>7,397</b>	<b>7,277</b>	<b>-120</b>	<b>-1.6</b>		
No Area Assigned	23	0	-23	-		
<b>Service</b>	<b>64,184</b>	<b>65,357</b>	<b>1,173</b>	<b>1.8</b>		

‘-’ indicates that a percentage change is not reported because the base number of incidents is less than 50

## NOTES

Anti-social behaviour (ASB) incident data are output from a command and control system which is used to respond to calls for service from members of the public by prioritising the call and tasking the appropriate police response. Each incident is closed off using codes and definitions set out in the National Standard for Incident Recording (NSIR), designed to provide a common approach to be followed by police forces in England, Wales and Northern Ireland in classifying the broad range of calls for service received. These figures should be interpreted as 'calls for service' rather than as figures which reflect the true level of victimisation. As these figures only relate to those anti-social behaviour incidents reported to the police (and may exclude those incidents reported to other agencies, such as local councils), they only provide an indication of the true extent of reported anti-social behaviour.

Data on ASB incidents reported to the police have been compiled since the NSIR was introduced in April 2006. Between April 2006 and March 2011, ASB incidents were split into fourteen different incident types, and these categories were used as the basis on which ASB incident levels were reported.

Following Home Office national guidance introduced on 1<sup>st</sup> April 2011 on how police forces record ASB incidents, the existing approach was changed to focus more on the needs of the caller or risk to the caller rather than the previous approach which centred on categorising the type of ASB incident. As a result the number of ASB incident types has been reduced from fourteen to three. The focus is now on how the ASB incident being reported impacts on the caller, with emphasis placed on identifying the vulnerable individuals, communities and environments most at risk.

While the national guidance and incident types for recording anti-social behaviour changed from 1<sup>st</sup> April 2011, the overall levels before and after this change appear to be sufficiently comparable for a time series of figures recorded under both the previous and the current guidance to be produced. However it should be noted that the figures prior to 1<sup>st</sup> April 2011 presented in this bulletin and in the accompanying excel spreadsheet exclude the incident type 'Hoax Calls to Emergency Services', which was one of the fourteen incident types in use between 2006/07 and 2010/11. Incidents of this nature were removed from the Anti-Social Behaviour category and placed in the Public Safety and Welfare category from the start of April 2011. This incident type was removed from figures prior to 1<sup>st</sup> April 2011 to maintain data comparability.

### Data Accuracy

As ASB incidents are extracted from an operational system whose primary function is to prioritise and respond to calls for service from members of the public, the data will always be subject to change. Incidents of ASB are not individually checked for compliance with the National Standard for Incident Recording by the PSNI's Statistics Branch.

### Additional data

This bulletin shows a Northern Ireland level summary of anti-social behaviour incidents recorded by the police for the financial year 2012/13. Additional figures to accompany this bulletin are published in a spreadsheet: [http://www.psnipolice.uk/monthly\\_asb\\_update\\_apr-mar\\_12\\_13.xls](http://www.psnipolice.uk/monthly_asb_update_apr-mar_12_13.xls). This spreadsheet provides an excel version of the figures provided in Table 1 in this bulletin. In addition there are two pivot tables providing ASB incidents available:

- at Northern Ireland level as well as for each policing district and policing area; and
- for each financial year since ASB incident figures were first compiled, 2006/07 to 2012/13 (with figures for Hoax Calls to Emergency Services removed from figures prior to April 2011 in order to provide a comparable data series)
- for each of the last 24 months April 2011 to March 2013

The pivot tables allow the user to manipulate the data, select the data they are most interested in and carry out calculations on the data. The data records displayed in the pivot tables are also available in this spreadsheet.

### Further information

Information on perceptions of anti-social behaviour is available from the Northern Ireland Crime Survey and can be accessed through the Department of Justice Internet Site: <http://www.dojni.gov.uk/index/statistics-research/stats-research-publications.htm>.

Copies of other PSNI publications are available from the PSNI Internet site:

[http://www.psnipolice.uk/index/updates/updates\\_statistics.htm](http://www.psnipolice.uk/index/updates/updates_statistics.htm)

Provisional management information drawn from police anti-social behaviour figures, published at street level each month, is available through the [police crime mapping website](#). The figures on the crime mapping website will differ from those provided in this bulletin as they have been extracted from the police administrative system on different dates, and also require a grid reference in order to be mapped.

For further information about the anti-social behaviour statistics for Northern Ireland, or to contact the PSNI Crime & Incident Statistician please:

Email: [statistics@psnipolice.uk](mailto:statistics@psnipolice.uk);

Write to: Statistics Branch, Lisnasharragh, 42 Montgomery Road, Belfast, BT6 9LD; or

Telephone: 0845 600 8000 ext 24135, Fax: 028 9092 2998