

Police Service of Northern Ireland

Domestic Abuse Incidents and Crimes Recorded by the Police in Northern Ireland: Quarterly Update to 31 December 2015

Published 25 February 2016

Domestic abuse incidents and crimes recorded by the police in Northern Ireland: Quarterly update to 31 December 2015

Published 25 February 2016

This quarterly bulletin presents the most recent statistics relating to domestic abuse incidents and crimes recorded by the police to 31 December 2015. Figures were compiled on 11 February 2016, using data extracted from the police administrative system on that date. Figures dating back to 1st April 2015 are provisional and will be subject to change until the finalised 2015/16 data are published in May 2016.

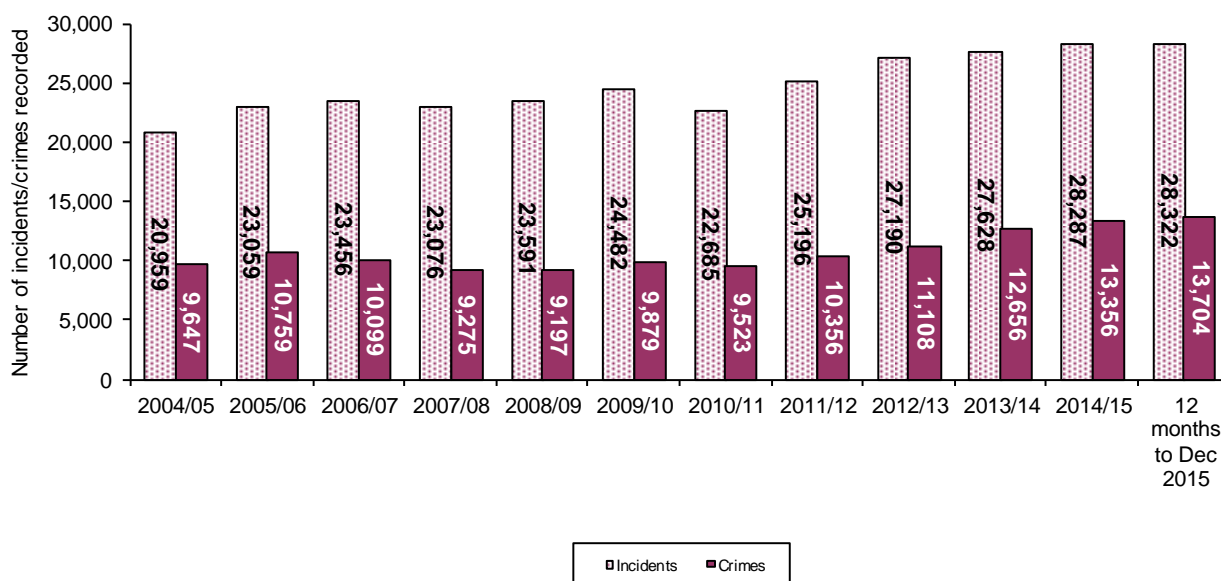
Introduction of Action Fraud within Northern Ireland: From 1st April 2015 Action Fraud has taken responsibility for the central recording of fraud offences previously recorded by PSNI; Action Fraud became responsible for all such reports in England & Wales by 1st April 2014. Action Fraud is the UK's National Reporting Centre for fraud and internet crime reported directly to them from the public and other organisations. As these fraud offences are no longer recorded by PSNI, all crime figures within this bulletin and accompanying spreadsheet exclude fraud and therefore may differ from those previously published.

Change to policing boundaries as a result of implementing the Review of Public Administration: As part of the Review of Public Administration which came into effect on 1st April 2015, PSNI has moved from eight to eleven policing districts, with the new policing model becoming fully operational at the end of September 2015. While previously published figures were based on a best approximation to the new boundaries, figures in this bulletin are based on the fully implemented boundaries.

OVERALL TRENDS IN DOMESTIC ABUSE INCIDENTS AND CRIMES

- Domestic abuse incidents have increased year on year since 2004/05, with the exception of two decreases recorded, a 1.6 per cent decrease between 2006/07 and 2007/08 and a 7.3 per cent decrease between 2009/10 and 2010/11. The figure of 28,322 incidents for the latest twelve months (January to December 2015) is the highest level recorded since 2004/05, and shows an increase of 0.1 per cent on the 2014/15 figure of 28,287.
- Domestic abuse crimes have tended to fluctuate since 2004/05, with the largest increase of 11.5 per cent occurring between 2004/05 and 2005/06 and the largest decrease of 8.2 per cent occurring between 2006/07 and 2007/08. The figure for the latest twelve months (13,704 crimes) is the highest level recorded since 2004/05, representing a 2.6 per cent increase on the 13,356 crimes recorded in 2014/15.

Figure 1 Trends in domestic abuse incidents and crimes



COMPARISON OF LATEST 12 MONTHS WITH PREVIOUS 12 MONTHS

- In the twelve months to 31 December 2015 there were 28,322 incidents recorded where there was a domestic abuse motivation. Of these 28,322 incidents there were 16,155 which did not contain a crime (ie non-notifiable offences or incidents where the circumstances did not amount to an offence being committed). The remaining 12,167 incidents contained one or more crimes (amounting to 13,704 recorded crimes in total).

Figure 2 Domestic abuse incidents and crimes

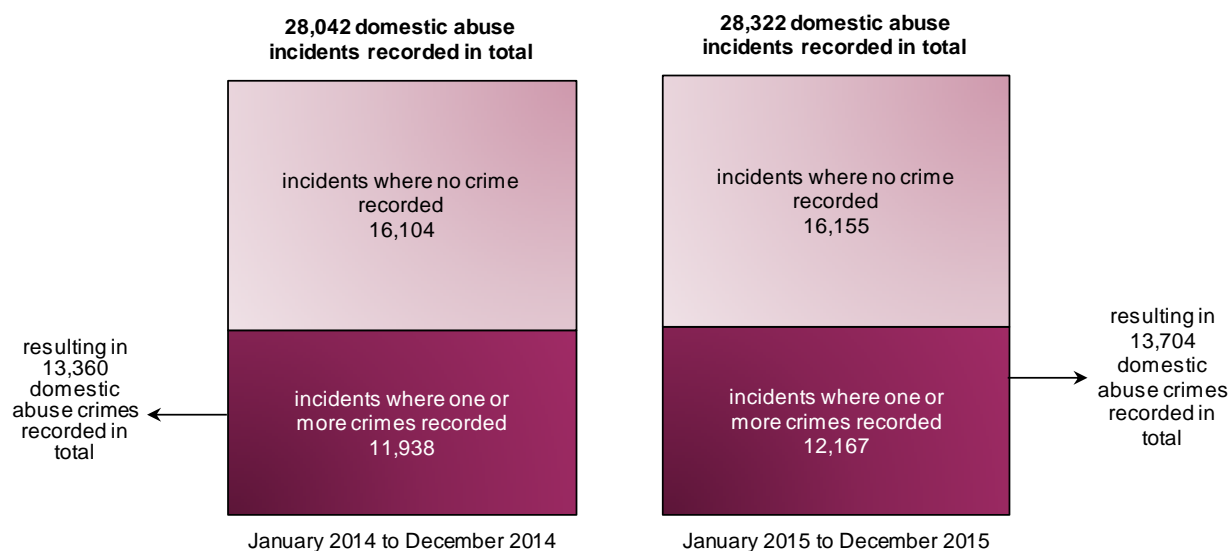


Table 1 Total number of domestic abuse incidents with and without crimes in the year to 31 December 2015 compared with the previous year

Domestic abuse Incidents	numbers		
	Jan'14 to Dec'14	Jan'15 to Dec'15	change
Incidents not containing any crime	16,104	16,155	51
Incidents with one or more crimes recorded	11,938	12,167	229
Total number of incidents	28,042	28,322	280

Table 2 Domestic abuse crimes in the year to 31 December 2015 compared with the previous year

Domestic abuse Crimes	numbers		
	Jan'14 to Dec'14	Jan'15 to Dec'15	change
Domestic abuse crimes recorded	13,360	13,704	344

- Domestic abuse incidents recorded in the latest 12 months have largely mirrored the levels recorded in the previous 12 months but at a higher level for seven of the twelve months. At 28,322, the figure for the latest 12 months to December 2015 is 280 incidents higher than the previous 12 months figure of 28,042. The largest monthly increases were seen when comparing the months of February (219 incidents higher in 2014), October (218 incidents higher in 2014) and May (185 incidents higher in 2014). By comparison, the largest monthly decreases occurred in June and July (both 171 incidents lower than 2014), and September (112 incidents lower than 2014).
- There were 13,704 domestic abuse crimes recorded in the latest 12 months to December 2015 (an increase of 344 crimes on the previous 12 month period). The number of domestic abuse crimes recorded was higher in seven out of the latest 12 months compared with the previous 12 months. The higher levels recorded are particularly noticeable in February 2015, August 2015 and October 2015.
- The domestic abuse crime outcomes rate for the latest 12 months is 32.3%, 1.8 percentage points higher than the rate for the previous 12 months (30.5%).

Figure 3 Domestic abuse incidents each month January 2014 to December 2015

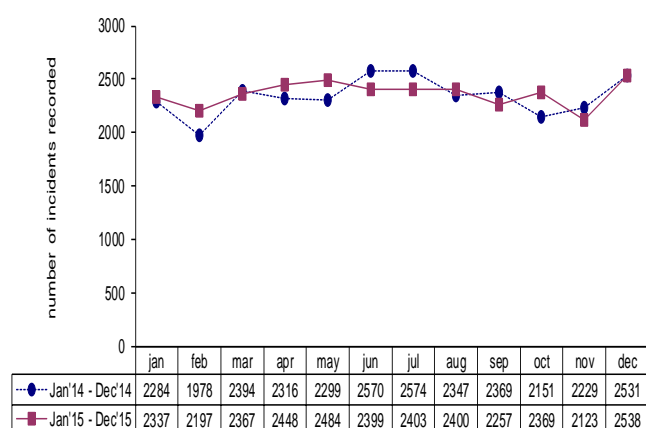


Figure 4 Domestic abuse crimes each month January 2014 to December 2015

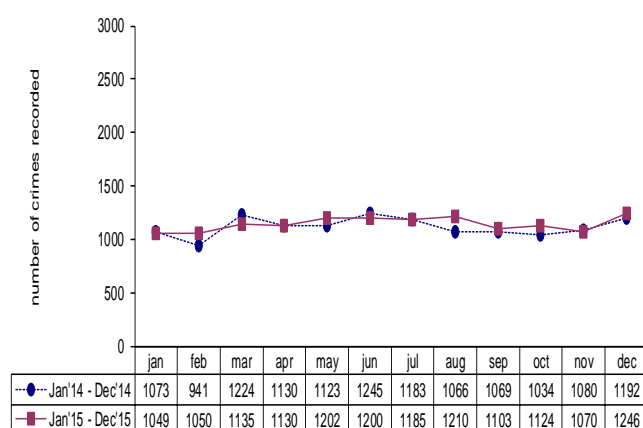


Table 3 Domestic abuse crimes and crime outcomes rates recorded in the year to 31 December 2015 compared with the previous year

Crime Type	Numbers and percentages					
	Crimes Recorded			Crime Outcomes Rate (%)		
	12 months to Dec 2014	12 months to Dec 2015	% change between years	12 months to Dec 2014	12 months to Dec 2015	% point change
Violence against the person offences	9,553	9,767	2.2	25.8	27.8	2.0
<i>Violence with injury (including homicide)</i>	3,843	3,824	-0.5	32.5	35.0	2.5
<i>Violence without injury</i>	5,710	5,943	4.1	21.2	23.1	1.9
Theft (including burglary) and criminal damage	2,147	2,270	5.7	41.2	42.9	1.6
Breach of non-molestation order	992	929	-6.4	59.0	62.6	3.7
All other offences	668	738	10.5	21.3	21.0	-0.3
Total crimes (domestic abuse motivation)	13,360	13,704	2.6	30.5	32.3	1.8

NOTES

Unlike the Northern Ireland Crime Survey (NICS), police recorded crime figures do not include crimes that have not been reported to the police or those that the police decide not to record, but they do cover crimes against those aged under 16, organisations such as businesses, and crimes 'against the state' i.e. with no immediate victim (e.g. possession of drugs).

Like any administrative data, police recorded crime statistics are affected by the rules governing the recording of data, systems in place and operational decisions in respect of the allocation of resources. More proactive policing in a given area could lead to an increase in crimes recorded without any real change in underlying crime trends. These issues need to be taken into account when using these data.

Time periods covered

The figures in this bulletin are presented on a financial year basis and, in this context:

- Quarter 1 refers to the months April, May and June
- Quarter 2 refers to the months July, August and September
- Quarter 3 refers to the months October, November and December
- Quarter 4 refers to the months January, February and March

Data accuracy

Figures within the current year to date are provisional and will be subject to change until finalised figures for the full financial year are published in May 2016. While crimes included within the police recorded crime statistics for Northern Ireland are individually checked for compliance with the Home Office Counting Rules by the PSNI's Statistics Branch, the identification of a domestic abuse motivation is derived from a motivation 'tick box' on the system used by PSNI to record crime. The motivation is identified and completed by a police officer or member of police staff for each such reported incident or crime. The correct application of a domestic abuse motivation for all such incidents/crimes is not quality assured by the PSNI's Statistics Branch, but audits and data quality checks are routinely conducted in an attempt to ensure that any under or over-recording is corrected.

Additional data

This bulletin shows a Northern Ireland level summary of domestic abuse incidents and crimes recorded by the police in the 12 months to December 2015. Accompanying this bulletin are additional data in the form of [excel summary tables](#) and [excel pivot table data](#). The data is also available in open data format.

The pivot tables allow the user to manipulate the data, select the data they are most interested in and carry out calculations on the data. The data records displayed in the pivot tables are also available in the same spreadsheet files. The pivot tables provide a range of data including domestic abuse incidents, domestic abuse crimes and crime outcomes where there is a domestic abuse motivation (both numbers and rates). Each of these data measures is available:

- at Northern Ireland level as well as for each policing district and policing area;
- for a range of crime types; and
- for a range of time periods (previous and current rolling 12 months, previous and current financial years to the end of the latest quarter and each of the last 8 quarters).

Further information

Annual figures on domestic abuse incidents and crimes from 2004/05 to 2014/15 are available in the publication Trends in Domestic Abuse Incidents and Crimes Recorded by the Police in Northern Ireland 2004/05 to 2014/15, available at:

https://www.psni.police.uk/globalassets/inside-the-psni/our-statistics/domestic-abuse-statistics/domestic_abuse_incidents_and_crimes_in_northern_ireland_2004-05_to_2014-15.pdf

Further details on Police Recorded Crime statistics, including those with a domestic abuse motivation, are available in the [User Guide to Police Recorded Crime Statistics in Northern Ireland](#). This is a reference guide with explanatory notes regarding the issues and classifications which are key to the production and presentation of police recorded crime statistics. The [definition of domestic abuse](#) upon which these statistics are based is also available in this user guide and on the PSNI Internet site.

Copies of other PSNI publications are available from the PSNI Internet site:

<https://www.psni.police.uk/inside-psni/Statistics/>

For further information about the police recorded crime statistics for Northern Ireland, or to contact the PSNI Crime and Incident Statistician please:

Email: statistics@psni.police.uk;

Write to: Statistics Branch, Lisnasharragh, 42 Montgomery Road, Belfast, BT6 9LD; or

Telephone: 028 9065 0222 ext 24135, Fax: 028 9092 2998