

Police Service of Northern Ireland

Domestic Abuse Incidents and Crimes Recorded by the Police in Northern Ireland: Quarterly Update to 30 June 2015

Published 27 August 2015



Domestic abuse incidents and crimes recorded by the police in Northern Ireland: Quarterly update to 30 June 2015

Published 27 August 2015

This quarterly bulletin presents the most recent statistics relating to domestic abuse incidents and crimes recorded by the police to 30 June 2015. Figures were compiled on 21 August 2015, using data extracted from the police administrative system on that date. Figures dating back to 1st April 2015 are provisional and will be subject to change until the finalised 2015/16 data are published in May 2016.

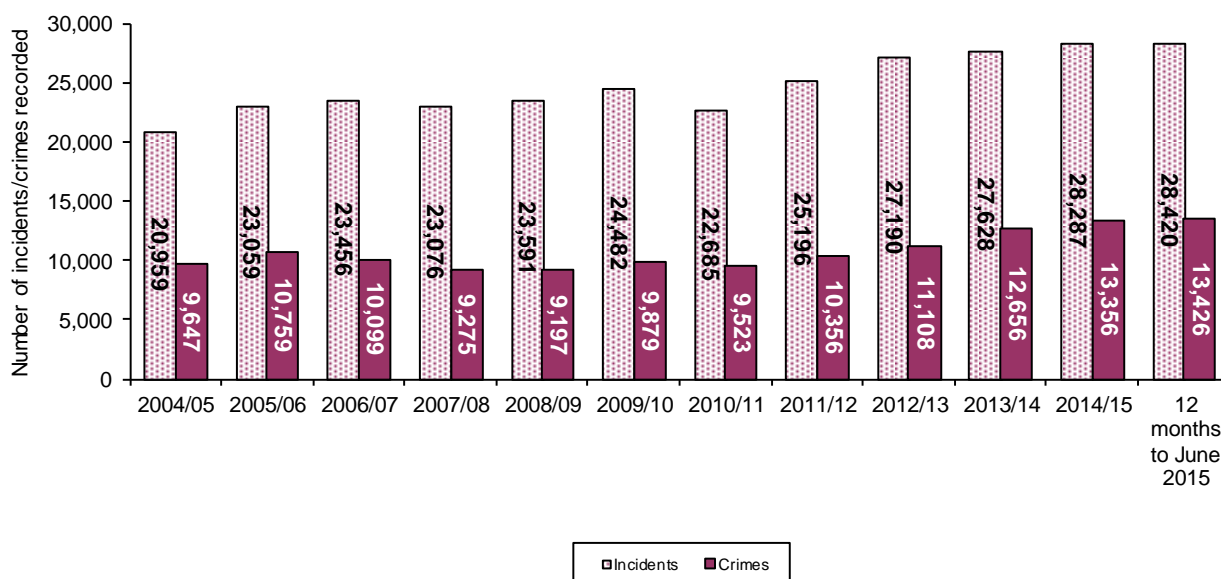
Introduction of Action Fraud within Northern Ireland: From 1st April 2015 Action Fraud has taken responsibility for the central recording of fraud offences previously recorded by PSNI; Action Fraud became responsible for all such reports in England & Wales by 1st April 2014. Action Fraud is the UK's National Reporting Centre for fraud and internet crime reported directly to them from the public and other organisations. As these fraud offences are no longer recorded by PSNI, all crime figures within this bulletin and accompanying spreadsheet exclude fraud and therefore may differ from those previously published.

Change to policing boundaries as a result of implementing the Review of Public Administration: As part of the Review of Public Administration which came into effect on 1st April 2015, PSNI has moved from eight to eleven policing districts. The geographic breakdown presented in this bulletin and in the accompanying excel spreadsheets is presented on the basis of these new boundaries. As it will take up to six months to have the new policing model fully in place, the figures presented here are a best approximation to the new boundaries and may be revised later in the year.

OVERALL TRENDS IN DOMESTIC ABUSE INCIDENTS AND CRIMES

- Domestic abuse incidents have increased year on year since 2004/05, with the exception of two decreases recorded, a 1.6 per cent decrease between 2006/07 and 2007/08 and a 7.3 per cent decrease between 2009/10 and 2010/11. The figure of 28,420 incidents for the latest twelve months (July 2014 to June 2015) is the highest level recorded since 2004/05, and shows an increase of 0.5 per cent on the 2014/15 figure of 28,287.
- Domestic abuse crimes have tended to fluctuate since 2004/05, with the largest increase of 11.5 per cent occurring between 2004/05 and 2005/06 and the largest decrease of 8.2 per cent occurring between 2006/07 and 2007/08. The figure for the latest twelve months (13,426 crimes) is the highest level recorded since 2004/05, representing a 0.5 per cent increase on the 13,356 crimes recorded in 2014/15.

Figure 1 Trends in domestic abuse incidents and crimes



COMPARISON OF LATEST 12 MONTHS WITH PREVIOUS 12 MONTHS

- In the twelve months to 30 June 2015 there were 28,420 incidents recorded where there was a domestic abuse motivation. Of these 28,420 incidents there were 16,456 which did not contain a crime (ie non-notifiable offences or incidents where the circumstances did not amount to an offence being committed). The remaining 11,964 incidents contained one or more crimes (amounting to 13,426 recorded crimes in total).

Figure 2 Domestic abuse incidents and crimes

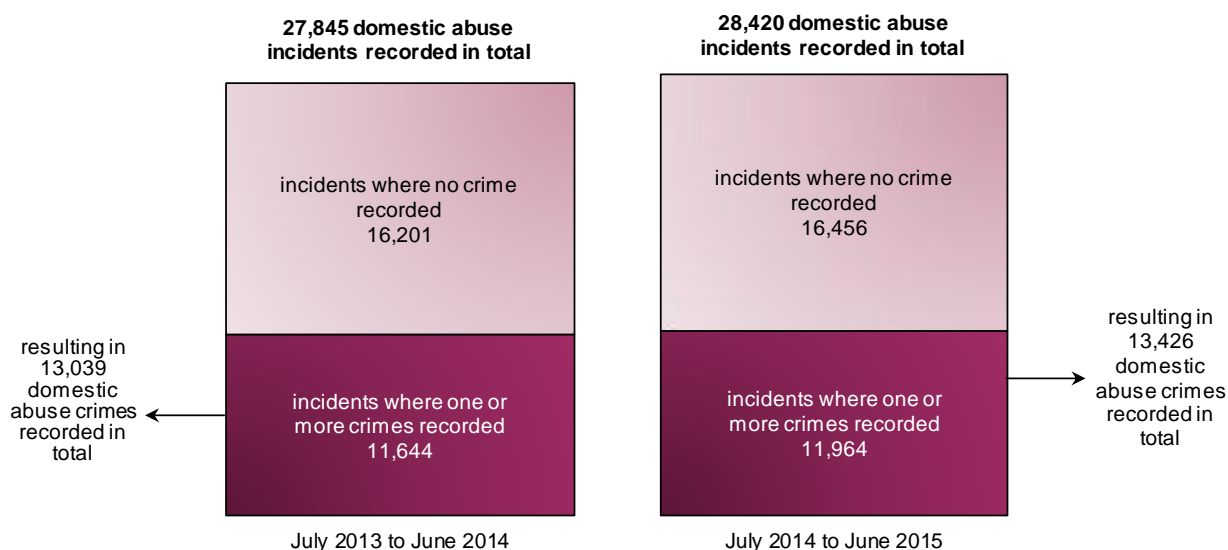


Table 1 Total number of domestic abuse incidents with and without crimes in the year to 30 June 2015 compared with the previous year

Domestic abuse Incidents	Jul'13 to Jun'14	Jul'14 to Jun'15	numbers
			change
Incidents not containing any crime	16,201	16,456	255
Incidents with one or more crimes recorded	11,644	11,964	320
Total number of incidents	27,845	28,420	575

Table 2 Domestic abuse crimes in the year to 30 June 2015 compared with the previous year

Domestic abuse Crimes	Jul'13 to Jun'14	Jul'14 to Jun'15	numbers
			change
Domestic abuse crimes recorded	13,039	13,426	387

- Domestic abuse incidents recorded in the latest 12 months have largely mirrored the levels recorded in the previous 12 months but at a higher level for seven of the twelve months. The largest monthly increases were seen when comparing the months of February (219 incidents higher in 2014), May (181 incidents higher in 2014) and December (178 incidents higher in 2013). By comparison, the figure for June 2015 was 176 lower than for June 2014. At 28,420, the figure for the latest 12 months is 575 incidents higher than the previous 12 months figure of 27,845.
- There were 13,426 domestic abuse crimes recorded in the latest 12 months (an increase of 387 crimes on the previous 12 month period). The number of domestic abuse crimes recorded was higher in seven out of the latest 12 months compared with the previous 12 months. The higher levels recorded are particularly noticeable in September 2014, December 2014 and February 2015.
- The domestic abuse crime outcomes rate for the latest 12 months is 31.6%, 0.5 percentage points lower than the rate for the previous 12 months (31.0%).

Figure 3 Domestic abuse incidents each month July 2013 to June 2015

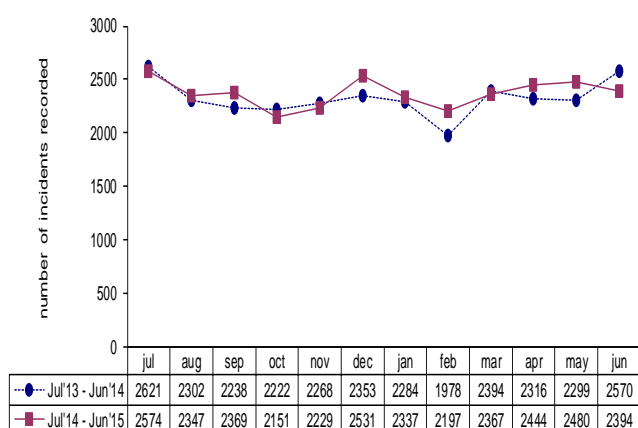


Figure 4 Domestic abuse crimes each month July 2013 to June 2015

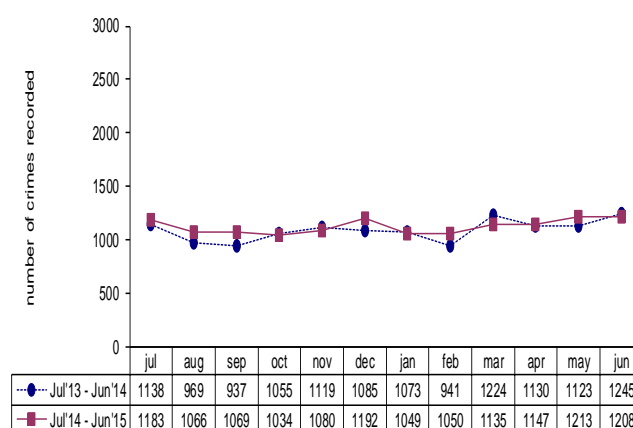


Table 3 Domestic abuse crimes and crime outcomes rates recorded in the year to 30 June 2015 compared with the previous year

Crime Type	Numbers and percentages					
	Crimes Recorded			Crime Outcomes Rate (%)		
	12 months to Jun 2014	12 months to Jun 2015	% change between years	12 months to Jun 2014	12 months to Jun 2015	% point change
Violence against the person offences	9,209	9,587	4.1	26.1	26.8	0.8
<i>Violence with injury (including homicide)</i>	3,726	3,789	1.7	33.7	32.9	-0.8
<i>Violence without injury</i>	5,483	5,798	5.7	20.9	22.9	1.9
Theft (including burglary) and criminal damage	2,190	2,202	0.5	40.1	42.3	2.2
Breach of non-molestation order	1,032	921	-10.8	58.7	60.9	2.2
All other offences	608	716	17.8	25.8	23.7	-2.1
Total crimes (domestic abuse motivation)	13,039	13,426	3.0	31.0	31.6	0.5

NOTES

Unlike the Northern Ireland Crime Survey (NICS), police recorded crime figures do not include crimes that have not been reported to the police or those that the police decide not to record, but they do cover crimes against those aged under 16, organisations such as businesses, and crimes 'against the state' i.e. with no immediate victim (e.g. possession of drugs).

Like any administrative data, police recorded crime statistics are affected by the rules governing the recording of data, systems in place and operational decisions in respect of the allocation of resources. More proactive policing in a given area could lead to an increase in crimes recorded without any real change in underlying crime trends. These issues need to be taken into account when using these data.

Time periods covered

The figures in this bulletin are presented on a financial year basis and, in this context:

- Quarter 1 refers to the months April, May and June
- Quarter 2 refers to the months July, August and September
- Quarter 3 refers to the months October, November and December
- Quarter 4 refers to the months January, February and March

Data accuracy

Figures within the current year to date are provisional and will be subject to change until finalised figures for the full financial year are published in May 2016. While crimes included within the police recorded crime statistics for Northern Ireland are individually checked for compliance with the Home Office Counting Rules by the PSNI's Statistics Branch, the identification of a domestic abuse motivation is derived from a motivation 'tick box' on the system used by PSNI to record crime. The motivation is identified and completed by a police officer or member of police staff for each such reported incident or crime. The correct application of a domestic abuse motivation for all such incidents/crimes is not quality assured by the PSNI's Statistics Branch, but audits and data quality checks are routinely conducted in an attempt to ensure that any under or over-recording is corrected.

Additional data

This bulletin shows a Northern Ireland level summary of domestic abuse incidents and crimes recorded by the police in the 12 months to June 2015. Accompanying this bulletin are additional data in the form of [excel summary tables](#) and [excel pivot table data](#). The data is also available in open data format.

The pivot tables allow the user to manipulate the data, select the data they are most interested in and carry out calculations on the data. The data records displayed in the pivot tables are also available in the same spreadsheet files. The pivot tables provide a range of data including domestic abuse incidents, domestic abuse crimes and crime outcomes where there is a domestic abuse motivation (both numbers and rates). Each of these data measures is available:

- at Northern Ireland level as well as for each policing district and policing area;
- for a range of crime types; and
- for a range of time periods (previous and current rolling 12 months, previous and current financial years to the end of the latest quarter and each of the last 8 quarters).

Further information

Annual figures on domestic abuse incidents and crimes from 2004/05 to 2014/15 are available in the publication Trends in Domestic Abuse Incidents and Crimes Recorded by the Police in Northern Ireland 2004/05 to 2014/15, available at: http://www.psni.police.uk/domestic_abuse_incidents_and_crimes_in_northern_ireland_2004-05_to_2014-15.pdf

Further details on Police Recorded Crime statistics, including those with a domestic abuse motivation, are available in the [User Guide to Police Recorded Crime Statistics in Northern Ireland](#). This is a reference guide with explanatory notes regarding the issues and classifications which are key to the production and presentation of police recorded crime statistics. The [definition of domestic abuse](#) upon which these statistics are based is also available in this user guide and on the PSNI Internet site.

Copies of other PSNI publications are available from the PSNI Internet site:

http://www.psni.police.uk/index/updates/updates_statistics.htm

For further information about the police recorded crime statistics for Northern Ireland, or to contact the PSNI Crime and Incident Statistician please:

Email: statistics@psni.police.uk;

Write to: Statistics Branch, Lisnasharragh, 42 Montgomery Road, Belfast, BT6 9LD; or

Telephone: 028 9065 0222 ext 24135, Fax: 028 9092 2998