

Police Service of Northern Ireland

Domestic Abuse Incidents and Crimes Recorded by the Police in Northern Ireland: Quarterly Update to 31 March 2015

(Providing final figures for 1st April 2014 to 31st March 2015)

Published 12 May 2015

Domestic abuse incidents and crimes recorded by the police in Northern Ireland: Quarterly update to 31 March 2015

Published 12 May 2015

This quarterly bulletin presents the most recent statistics relating to domestic abuse incidents and crimes recorded by the police for the financial year 2014/15, which runs from 1 April 2014 to 31 March 2015.

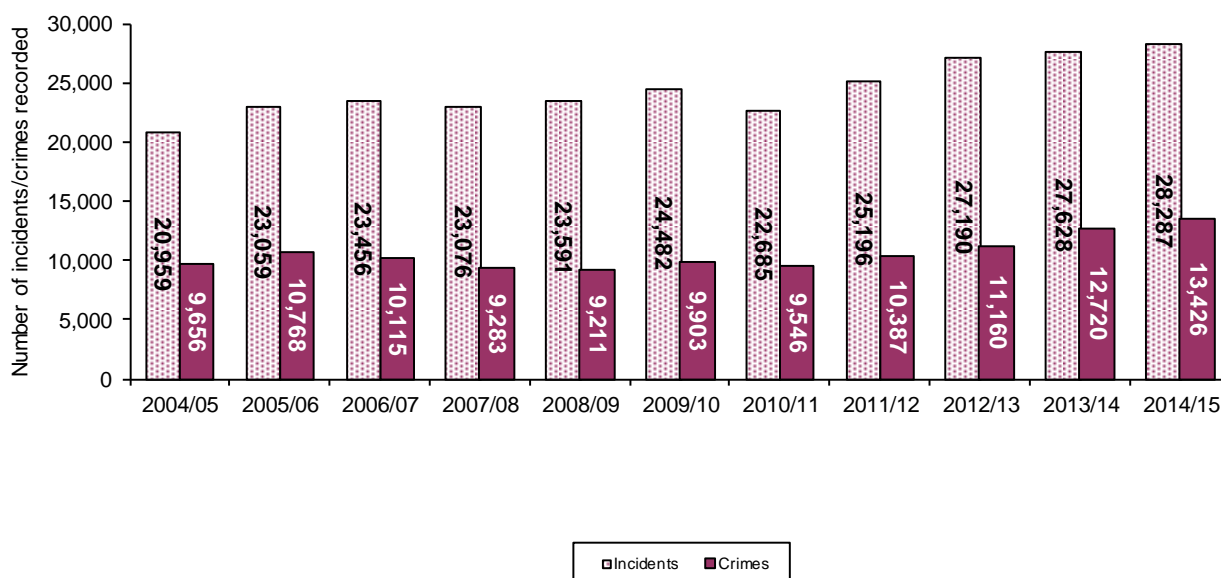
A range of more detailed tables are available in the [excel summary tables](#) and [excel pivot table data](#) which accompany this bulletin. Further information on the contents of these tables can be found in the NOTES page at the end of the bulletin.

A more comprehensive publication covering trends from 2004/05 to 2014/15 will be available in early July 2015. The next quarterly update covering the latest 12 months to 30 June 2015 will be published on 27 August 2015.

OVERALL TRENDS IN DOMESTIC ABUSE INCIDENTS AND CRIMES

- Domestic abuse incidents have increased year on year since 2004/05, with the exception of two decreases recorded, a 1.6 per cent decrease between 2006/07 and 2007/08 and a 7.3 per cent decrease between 2009/10 and 2010/11. The figure of 28,287 incidents for 2014/15 is the highest level recorded since 2004/05 and shows an increase of 2.4 per cent on the 2013/14 figure of 27,628.
- Domestic abuse crimes have tended to fluctuate since 2004/05, with the largest increase of 11.5 per cent occurring between 2004/05 and 2005/06 and the largest decrease of 8.2 per cent occurring between 2006/07 and 2007/08. The figure for 2014/15 (13,426 crimes) is the highest level recorded since 2004/05 and represents a 5.6 per cent increase on the 12,720 crimes recorded in 2013/14.
- There were 6 murders with a domestic abuse motivation in 2014/15, compared with 7 in 2013/14.

Figure 1 Trends in domestic abuse incidents and crimes



COMPARISON OF LATEST 2014/15 WITH 2013/14

- In 2014/15 there were 28,287 incidents recorded where there was a domestic abuse motivation. Of these 28,287 incidents there were 16,360 which did not contain a crime (i.e. non-notifiable offences or incidents where the circumstances did not amount to an offence being committed). The remaining 11,927 incidents contained one or more crimes (amounting to 13,426 recorded crimes in total).

Figure 2 Domestic abuse incidents and crimes

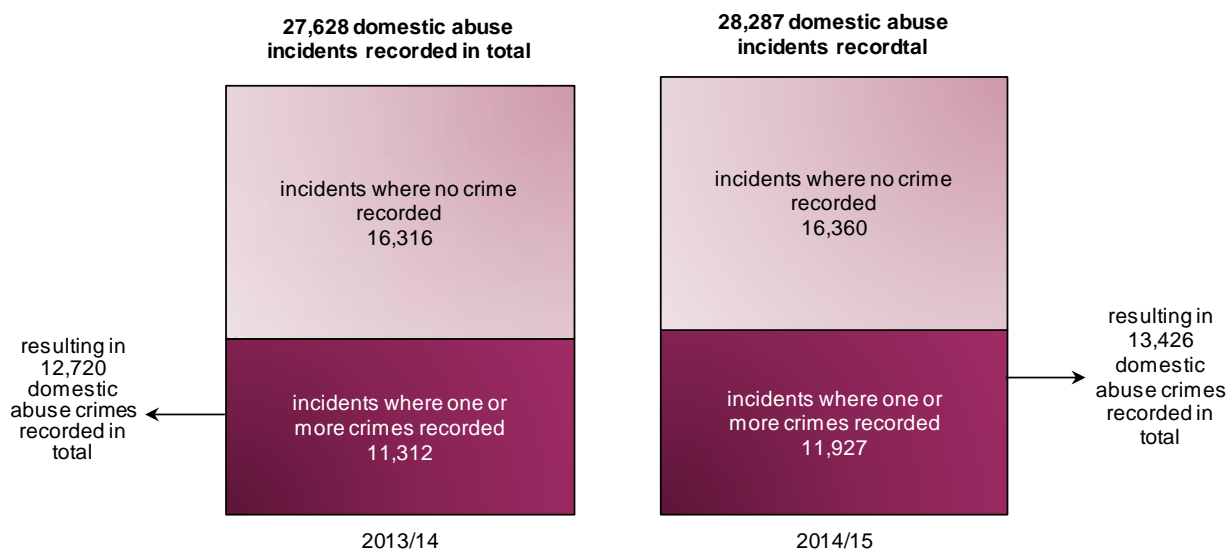


Table 1 Total number of domestic abuse incidents with and without crimes, 2013/14 and 2014/15

Domestic abuse incidents	numbers		
	2013/14	2014/15	change
Incidents not containing any crime	16,316	16,360	44
Incidents with one or more crimes recorded	11,312	11,927	615
Total number of incidents	27,628	28,287	659

Table 2 Domestic abuse crimes, 2013/14 and 2014/15

Domestic abuse crimes	numbers		
	2013/14	2014/15	change
Domestic abuse crimes recorded	12,720	13,426	706

- Domestic abuse incidents recorded during 2014/15 have largely mirrored the levels recorded in the previous 12 months but at a higher level for seven of the twelve months. The largest monthly increases were seen in the months of June, February, December and September, with increases of 256, 219, 178 and 131 respectively. Over the last two years the highest number of domestic abuse incidents was recorded in July 2013 (2,621), while the lowest level was in February 2014 (1,978).
- There were 13,426 domestic abuse crimes recorded during 2014/15, an increase of 706 when compared with 2013/14. The number of domestic abuse crimes recorded during 2014/15 was higher in each month apart from October, November, January and March when compared with 2013/14. The higher levels recorded were particularly noticeable in June 2014. The highest number of domestic abuse crimes recorded during 2013/14 and 2014/15 occurred in June 2014 (1,252) while the lowest level was recorded in February 2014 (941).
- The domestic abuse crime outcomes rate for 2014/15 is 31.3%, 0.5 percentage points lower than the rate for 2013/14 (31.7%).

Figure 3 Domestic abuse incidents each month April 2013 to March 2015

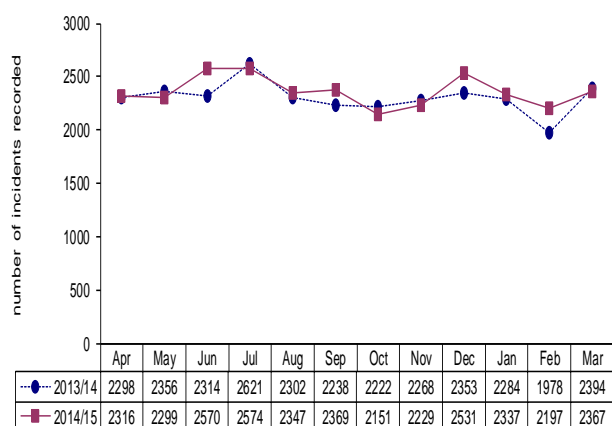


Figure 4 Domestic abuse crimes each month April 2013 to March 2015

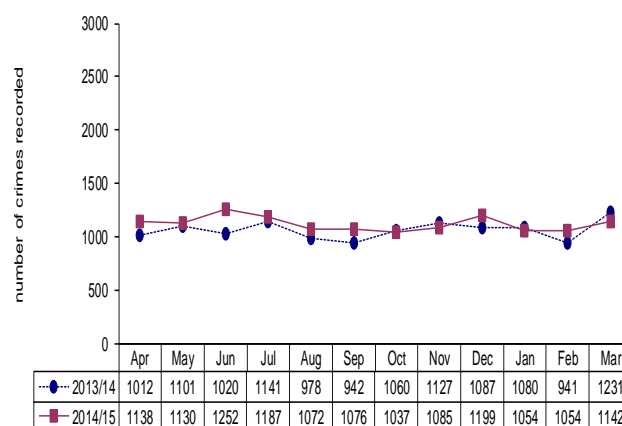


Table 3 Domestic abuse crimes and crime outcomes rates, 2013/14 and 2014/15

Crime Type	numbers and percentages					
	Crimes Recorded			Crime Outcomes Rate (%)		
	2013/14	2014/15	% change between years	2013/14	2014/15	% point change
Violence against the person offences	8,965	9,504	6.0	26.7	26.7	0.0
<i>Violence with injury (including homicide)</i>	3,699	3,807	2.9	33.9	30.0	-0.9
<i>Violence without injury</i>	5,266	5,697	8.2	21.6	22.5	0.9
Theft (including burglary) and criminal damage	2,117	2,212	4.5	41.8	41.9	0.1
Breach of non-molestation order	986	972	-1.4	58.8	59.9	1.1
All other offences	652	738	13.2	27.3	20.3	-7.0
Total crimes (domestic abuse motivation)	12,720	13,426	5.6	31.7	31.3	-0.5

COMPARISON OF POLICING DISTRICTS AND AREAS: 2013/14 AND 2014/15

- Between 2013/14 and 2014/15 domestic abuse incidents increased in all policing districts apart from E District which showed a fall of 3.4 per cent. The largest increase was in F District (10.2 per cent) followed by B District with an increase of 9.7 per cent. At policing area, the change in levels of domestic abuse incidents ranged from a fall of 8.2 per cent in Castlereagh policing area to a rise of 22.7 per cent in Fermanagh policing area.
- Domestic abuse crimes increased in all policing districts except for H and A Districts which fell by 5.0 per cent and 1.1 per cent respectively. B District experienced the largest increase (17.5 per cent) followed by F District with an increase of 16.4 per cent. At policing area level Lisburn policing area showed the largest fall (-12.6 per cent) followed closely by Ballymena (-12.1 per cent), while an increase of 32.6 per cent was seen in Omagh and an increase of 32.3 per cent was seen in Antrim.

Table 4 Domestic abuse incidents, crimes and crime outcome rates by policing district and policing area¹, 2013/14 and 2014/15

Policing district/area	Incidents			Crimes recorded			Numbers and percentages Crime outcomes (rate,%) ²		
	2013/14	2014/15	change	2013/14	2014/15	change	2013/14	2014/15	% point change ³
A District	3,535	3,556	21	1,711	1,692	-19	31.0	29.9	-1.1
North Belfast	2,265	2,190	-75	1,038	1,030	-8	33.2	28.4	-4.8
West Belfast	1,270	1,366	96	673	662	-11	27.5	32.2	4.7
B District	2,542	2,788	246	1,264	1,485	221	28.0	23.8	-4.2
East Belfast	1,455	1,524	69	681	820	139	30.7	22.7	-8.0
South Belfast	1,087	1,264	177	583	665	82	24.9	25.3	0.4
C District	3,537	3,580	43	1,572	1,689	117	26.3	32.4	6.1
Ards	928	955	27	389	443	54	25.4	32.1	6.6
Castlereagh	622	571	-51	266	247	-19	24.4	31.6	7.1
Down	888	926	38	420	481	61	29.8	36.6	6.8
North Down	1,099	1,128	29	497	518	21	24.9	29.2	4.2
D District	3,771	3,879	108	1,801	1,862	61	29.4	34.7	5.3
Antrim	629	750	121	297	393	96	34.7	44.5	9.8
Carrickfergus	500	522	22	206	250	44	23.8	35.2	11.4
Lisburn	1,560	1,487	-73	787	688	-99	27.6	29.7	2.1
Newtownabbey	1,082	1,120	38	511	531	20	31.3	33.7	2.4
E District	4,596	4,439	-157	2,075	2,275	200	36.0	34.9	-1.1
Armagh	713	665	-48	304	328	24	37.8	40.2	2.4
Banbridge	619	656	37	245	270	25	33.1	39.6	6.6
Craigavon	1,927	1,851	-76	861	992	131	35.3	31.9	-3.5
Newry & Mourne	1,337	1,267	-70	665	685	20	37.3	35.0	-2.3
F District	2,502	2,758	256	1,119	1,303	184	34.2	31.9	-2.3
Cookstown	438	428	-10	196	201	5	33.7	34.3	0.7
Dungannon & South Tyrone	654	658	4	294	331	37	37.4	33.8	-3.6
Fermanagh	740	908	168	356	409	53	31.2	28.9	-2.3
Omagh	670	764	94	273	362	89	35.2	32.3	-2.8
G District	3,999	4,049	50	1,802	1,813	11	36.8	30.6	-6.2
Foyle	2,448	2,410	-38	1,071	1,081	10	36.6	29.7	-6.9
Limavady	540	587	47	258	242	-16	37.2	30.2	-7.0
Magherafelt	442	486	44	238	265	27	34.9	32.5	-2.4
Strabane	569	566	-3	235	225	-10	39.1	33.3	-5.8
H District	3,146	3,238	92	1,376	1,307	-69	30.2	28.9	-1.3
Ballymena	1,031	993	-38	473	416	-57	32.1	32.0	-0.2
Ballymoney	322	340	18	151	158	7	32.5	19.6	-12.8
Coleraine	1,106	1,150	44	442	450	8	24.4	27.8	3.3
Larne	517	569	52	228	209	-19	35.1	32.5	-2.6
Moyle	170	186	16	82	74	-8	32.9	28.4	-4.5
Service	27,628	28,287	659	12,720	13,426	706	31.7	31.3	-0.5

1. Incidents and crimes are geographically recorded by the police based on the location in which the incident occurred.

2. Outcomes presented here include charge/summons, cautions (adult and juvenile), discretionary disposals, penalty notices for disorder, offences taken into consideration and indictable only offences where no action was taken against the offender (died before proceedings or PPS did not prosecute).

3. The % point change is calculated on unrounded outcomes rate figures.

Figure 5 Percentage change in the number of domestic abuse incidents by policing district, 2013/14 and 2014/15

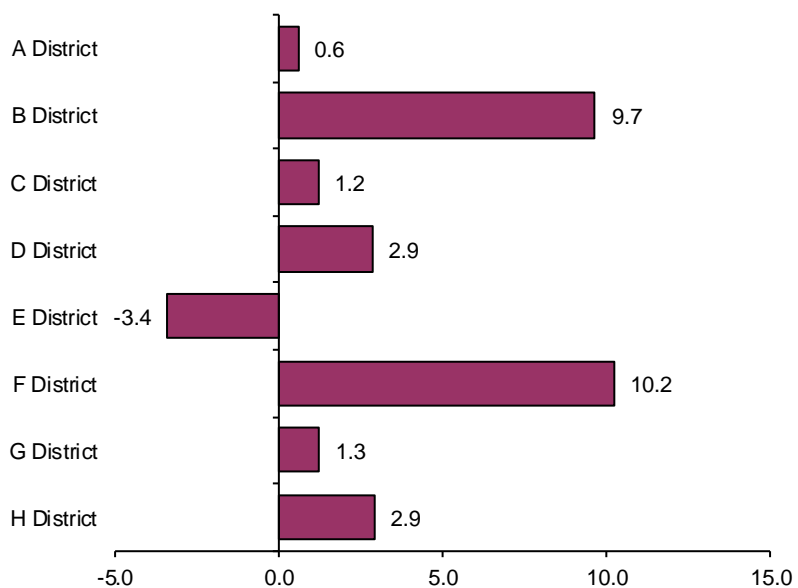
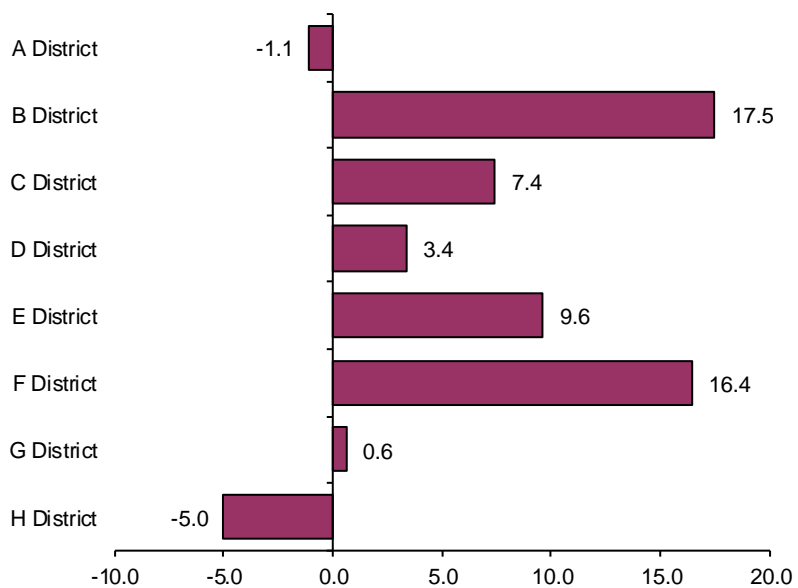


Figure 6 Percentage change in the number of domestic abuse crimes by policing district, 2013/14 and 2014/15



NOTES

Unlike the Northern Ireland Crime Survey (NICS), police recorded crime figures do not include crimes that have not been reported to the police or those that the police decide not to record, but they do cover crimes against those aged under 16, organisations such as businesses, and crimes 'against the state' i.e. with no immediate victim (e.g. possession of drugs).

Like any administrative data, police recorded crime statistics are affected by the rules governing the recording of data, systems in place and operational decisions in respect of the allocation of resources. More proactive policing in a given area could lead to an increase in crimes recorded without any real change in underlying crime trends. These issues need to be taken into account when using these data.

Time periods covered

The figures in this bulletin are presented on a financial year basis and, in this context:

- Quarter 1 refers to the months April, May and June
- Quarter 2 refers to the months July, August and September
- Quarter 3 refers to the months October, November and December
- Quarter 4 refers to the months January, February and March

Data accuracy

Figures covering the full financial year from 1st April to 31st March are presented in their finalised format and are not subject to revision. While crimes included within the police recorded crime statistics for Northern Ireland are individually checked for compliance with the Home Office Counting Rules, the identification of a domestic abuse motivation is derived from a motivation 'tick box' on the system used by PSNI to record crime. The motivation is identified and completed by a police officer or member of police staff for each such reported incident or crime. The correct application of a domestic abuse motivation for all such incidents/crimes is not quality assured by the PSNI's Statistics Branch, but audits and data quality checks are routinely conducted in an attempt to ensure that any under or over-recording is corrected.

Additional data

This bulletin shows a Northern Ireland level summary of domestic abuse incidents and crimes recorded by the police for the financial year 2014/15. Accompanying this bulletin are additional data in the form of [excel summary tables](#) and [excel pivot table data](#). The data is also available in open data format.

The pivot tables allow the user to manipulate the data, select the data they are most interested in and carry out calculations on the data. The data records displayed in the pivot tables are also available in the same spreadsheet files. The pivot tables provide a range of data including domestic abuse incidents, domestic abuse crimes and crime outcomes where there is a domestic abuse motivation (both numbers and rates). Each of these data measures is available:

- at Northern Ireland level as well as for each policing district and policing area;
- for a range of crime types; and
- for a range of time periods (previous and current rolling 12 months, previous and current financial years to the end of the latest quarter and each of the last 8 quarters).

Further information

[Trends in Domestic Abuse Incidents and Crimes Recorded by the Police in Northern Ireland 1998/99 to 2013/14](#) provides detailed trend information covering this time period. An updated publication covering trends from 1998/99 to 2014/15 will be available in early July 2015.

Further details on Police Recorded Crime statistics, including those with a domestic abuse motivation, are available in the [User Guide to Police Recorded Crime Statistics in Northern Ireland](#). This is a reference guide with explanatory notes regarding the issues and classifications which are key to the production and presentation of police recorded crime statistics. The [definition of domestic abuse](#) upon which these statistics are based is also available in this user guide and on the PSNI Internet site.

Copies of other PSNI publications are available from the PSNI Internet site:

http://www.psni.police.uk/index/updates/updates_statistics.htm

For further information about the police recorded crime statistics for Northern Ireland, or to contact the PSNI Crime and Incident Statistician please:

Email: statistics@psni.police.uk;

Write to: Statistics Branch, Lisnasharragh, 42 Montgomery Road, Belfast, BT6 9LD; or

Telephone: 028 9065 0222 ext 24135, Fax: 028 9092 2998