



# Police Service of Northern Ireland

## Monthly Performance Report to the Service Executive Board

Created on: 15 March 2013

Period Covered: April – February 2013 (approximating quarters 1-3)

Status: Monthly Report to SEB

This report has been compiled using the latest information available.

The information in this document is intended to provide Service Executive Team and Policing Board members with an assessment of police performance against the Northern Ireland Policing Plan 2012-2015 outcomes, using the measures agreed during development of the plan.

Further statistical and qualitative information is available to members via the PRiDE reporting system and via PSNI published statistics at:

[http://www.psni.police.uk/index/updates/updates\\_statistics.htm](http://www.psni.police.uk/index/updates/updates_statistics.htm)

Chief Officers and Members may also wish to examine Northern Ireland Crime Survey reports published by the Department of Justice at:

<http://www.dojni.gov.uk/index/statistics-research/stats-research-publications/northern-ireland-crime-survey-s-r.htm>

Personal

Professional

Protective

## Police Performance at a Glance

<i>Indicator/measure</i>	<i>Progress</i>
Increase Confidence	Latest quarterly increase 0.3%
Reduce Crime	Reduced by 2.5%
Reduce Burglary	Reduced by 9.2%
Reduce Antisocial Behaviour	Increased by 3.3%
Reduce Road Deaths	6 fewer road deaths since 1 <sup>st</sup> April
Reduce Road Injuries	Reduced by 3.1%
Reduce allegations of incivility	Reduced by 15.8%
Increase the use of officer discretion*	Increased by 8.5%
Increase the amount of time spent on patrol	Increased by 3.22%
Reduce Violent Crime	Reduced by 7.2%
Impact on Organised Crime**	Cash seizures are up by £308,049 The value of confiscation orders is up by £259,585 The Service have Frustrated, Disrupted or Dismantled 107 Organised Crime Groups since 1 <sup>st</sup> April 2012.

Except where stated, all above figures based on rolling 12 months calculation.

\* Provisional figures. Validation not yet complete.

\*\* Organised Crime figures are based on figures obtained from the Analysis Centre, based on national guidelines. These compare current financial year with previous financial year.

## Confidence in Policing

### Explanatory Note

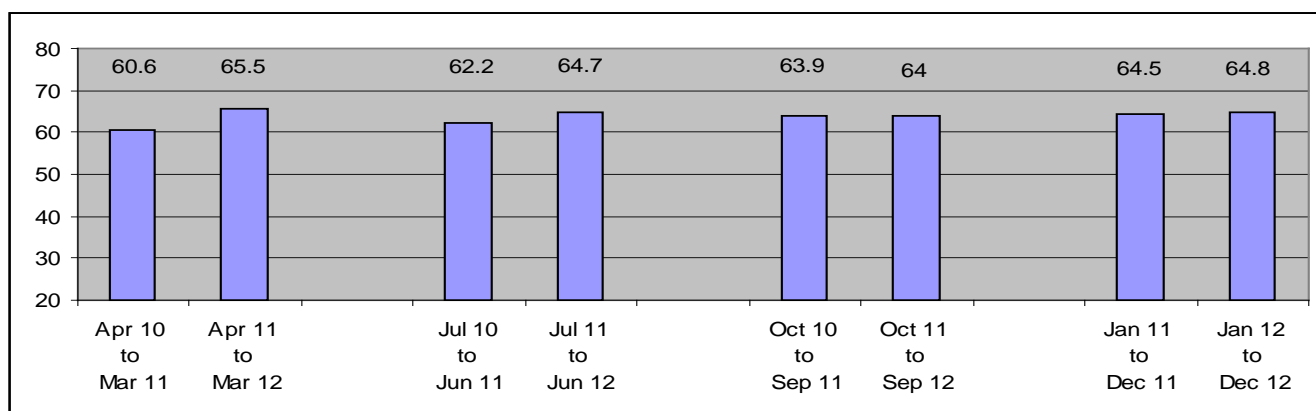
Confidence in Policing is measured using data from the Northern Ireland Crime Survey. The Northern Ireland Crime Survey (NICS) is a representative, continuous, personal interview survey in which people aged 16 and over living in private households in Northern Ireland are asked about their experiences of crime in the 12 months prior to interview as well as their perceptions of crime-related issues, including policing and justice, crime and anti-social behaviour. Self-completion modules are used to elicit information on sensitive topics, such as drug misuse and domestic violence.

It is an alternative, but complementary, measure of crime to offences recorded by the police. The agreed indicator of performance in this area is taken from the NICS measure of Public Confidence in the Local Police and is sourced from the Quarterly Update on *Perceptions of Policing, Justice and Anti-Social Behaviour*.

## Confidence

The level of confidence in the local police			
<i>The percentage of people saying that they strongly agree / tend to agree that the local police...</i>	<i>Jan 11 to Dec 11</i>	<i>Jan 12 to Dec 12</i>	<i>Variation</i>
a) Can be relied on to be there when you need them	50.6%	51.4%	+0.8% pts
b) Would treat you with respect if you had contact with them	83.5%	84.6%	+1.1% pts
c) Treat everyone fairly regardless of who they are	65.8%	66.0%	+0.2% pts
d) Can be relied on to deal with minor crimes	49.9%	51.2%	+1.6% pts
e) Understand the issues that affect this community	62.2%	62.8%	+0.6% pts
f) Are dealing with the things that matter to this community	49.1%	51.2%	+2.1% pts
<b>Overall Confidence in the local police</b>	<b>64.5%</b>	<b>64.8%</b>	<b>+0.3% pts</b>

The chart below illustrates comparisons between data obtained over the past 8 quarterly surveys.



### Key Points:

- Highlighted in table above - The proportion of people who expressed overall confidence in their local police in the 12-months to December 2012 showed a slight increase of 0.3% to that observed during the same period the previous year (from 64.5% to 64.8%).

## Personal Policing – Reduced level of crime and ASB, less road trauma and fewer victims

### Explanatory Note:

Personal Policing means dealing with those issues which affect people's daily lives and making sure that the police service meets individual needs.

Performance in this area is measured by examining police statistics on crime reduction, casualties on the roads and the level of antisocial behaviour.

- Crime reduction performance is focused on reducing overall levels of crime and burglary.
- Road safety is measured by examining the level of people killed and seriously injured across a range of age groups.
- Antisocial behaviour is measured by the number of recorded incidents and people's perception of the level of antisocial behaviour in their local area.

This data is sourced from official police recorded crime figures, records of antisocial behaviour incidents and the Northern Ireland Crime Survey.

To provide a short, medium and longer term perspective on performance in these areas, the statistics are presented in three ways;

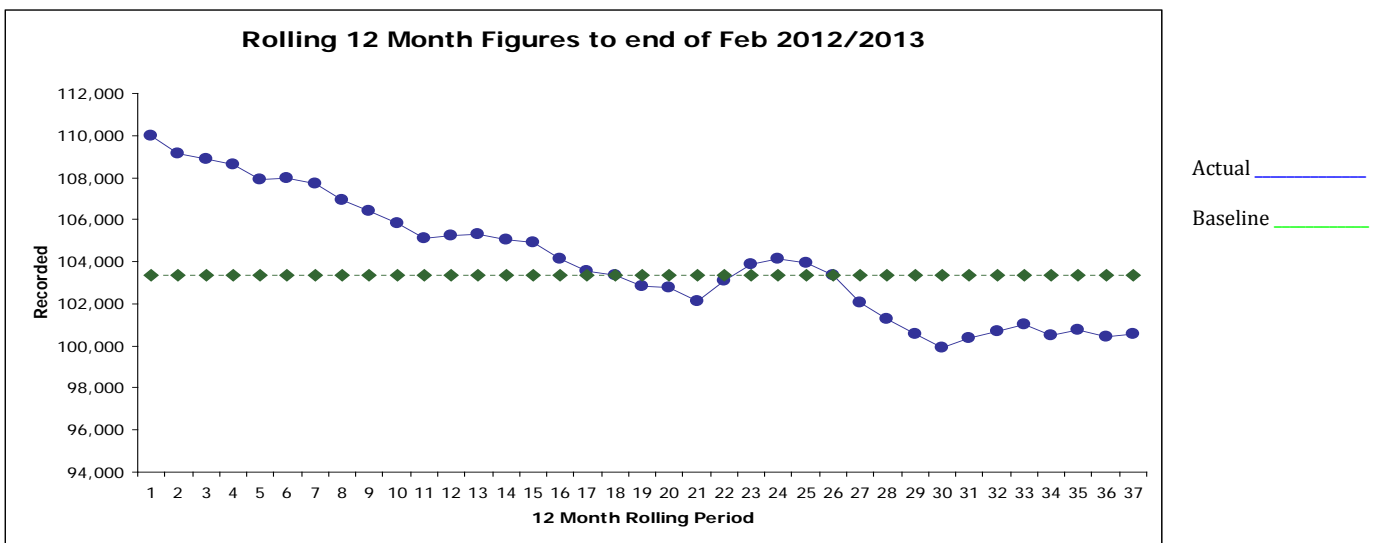
- **Most recent 12 months** compared to the last full financial year results
- **Current financial year to date** compared to previous financial year to date
- **Three year trend**, using rolling 12 month figures

Where relevant and available, further analysis and statistics are provided - for example comparisons with Most Similar Forces in England and Wales.

# Crime

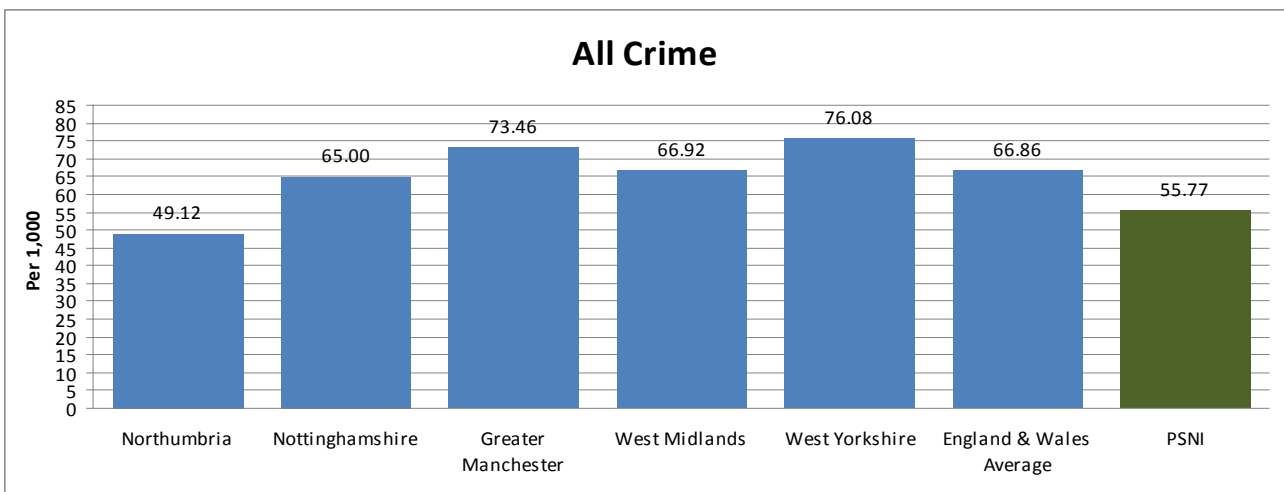
The number of recorded crimes – Most recent 12 months			
<i>2011/2012</i>	<i>12 Mar 12 – 11 Mar 13</i>	<i>Change</i>	<i>% Change</i>
<b>103,389</b>	<b>100,757</b>	<b>- 2,632</b>	<b>- 2.5%</b>
The number of recorded crimes – Financial Year to date comparison			
<i>1 Apr 11 – 11 Mar 12</i>	<i>1 Apr 12 – 11 March 13</i>	<i>Change</i>	<i>% Change</i>
<b>97,475</b>	<b>94,843</b>	<b>- 2,632</b>	<b>- 2.7%</b>
The number of recorded crimes – 3 Year trend			

The graphic below illustrates the pattern of reduction in crime over the past 37 months. The base line represents the 2011/12 Financial Year figure of 103,389.



## Further Analysis:

The chart below compares crime rates per 1,000 people using our Most Similar Force group and an average of all England and Wales Police Forces. This was compiled using most recent PSNI data and the most recent data published by HMIC.



Other data recently published in the Northern Ireland Crime Survey 2011/12 shows that:

- The risk of becoming a victim of crime remains lower in NI (11.2%) than in England and Wales (21.3%)

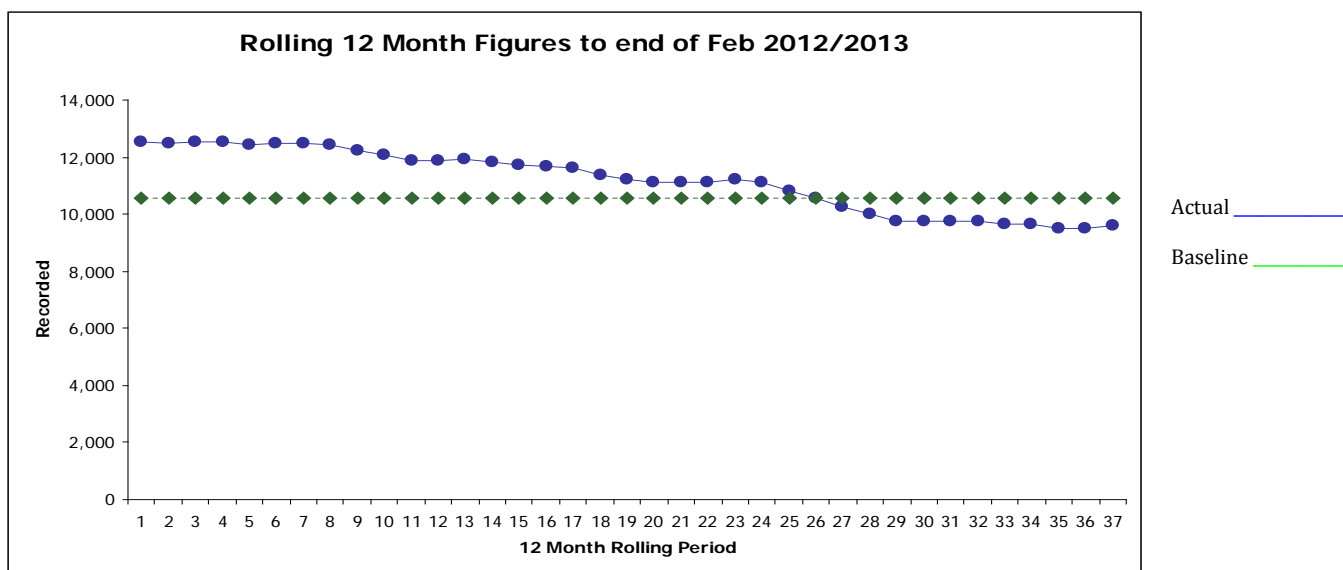
**Key Points:**

- The level of recorded crime remains just above the 100,000 mark.
- There were 2,632 fewer victims of crime
- Recorded crime is now at its lowest level since 2002/03 when 142,496 crimes were recorded. This represents a reduction of 30% in less than 10 years.
- The Police Service of Northern Ireland is below 4 out of 5 of our most similar force group and well below the England and Wales average crime rate.
- People are significantly less likely to be a victim of crime in Northern Ireland than in England and Wales.

# Burglary

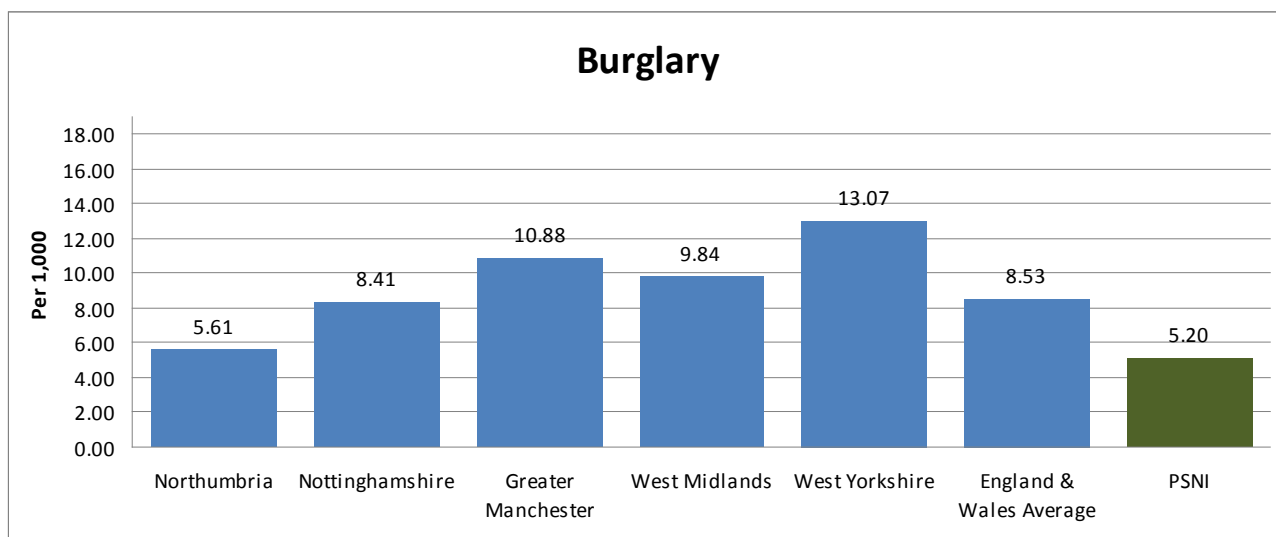
The number of burglaries – Most recent 12 months			
2011/2012	12 Mar 12 – 11 Mar 13	Change	% Change
10,580	9,611	-969	-9.2%
The number of burglaries – Financial Year to date comparison			
1 Apr 11 – 11 Mar 12	1 Apr 12 – 11 Mar 13	Change	% Change
10,045	9,076	-969	-9.6%
The number of burglaries – 3 Year trend			

This graphic illustrates the pattern of reduction in burglary over the past 37 months. The base line represents the 2011/12 Financial Year total figure of 10,580.



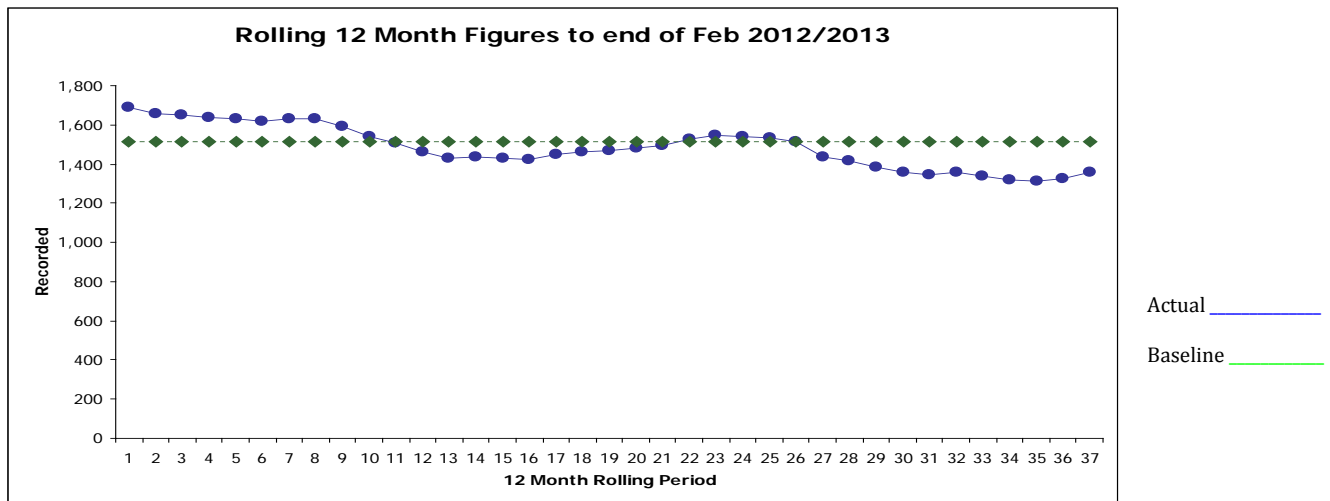
## Further Analysis:

The chart below compares crime rates per 1,000 people using our Most Similar Force group and an average of all England and Wales Police Forces. This was compiled using most recent PSNI data and the most recent data published by HMIC.



## Further analysis - Burglaries/Robberies where older people are victims

The number of burglaries (Older People as Victims) – Most recent 12 months			
2011/2012	12 Mar 12 – 11 Mar 13	Change	% Change
1,512	1,343	-169	-11.2%
The number of burglaries (Older People as Victims) – Financial Year to date comparison			
1 Apr 11 – 11 Mar 12	1 Apr 12 – 11 Mar 13	Change	% Change
1,442	1,273	-169	-11.7%
The number of burglaries (Older People as Victims) – 3 Year trend			



This graphic illustrates the pattern of reduction in burglaries and robberies where older people are victims over the past 37 months. The base line represents the 2011/12 Financial Year figure of 1,512.

### Key Points:

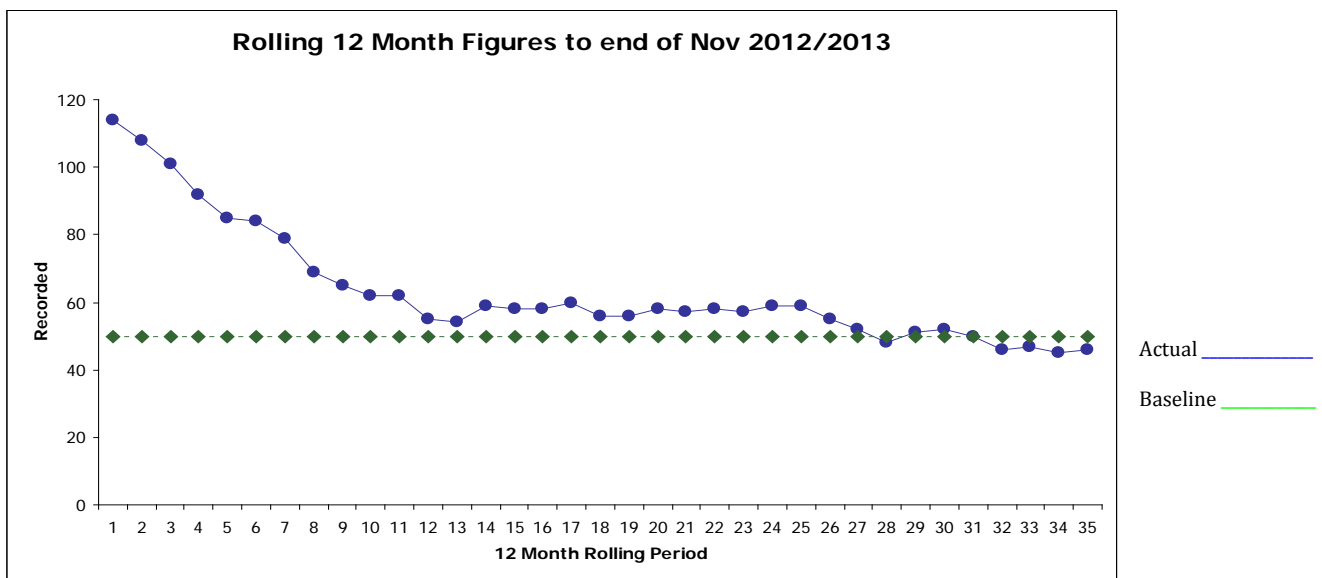
- While the level of burglary had been falling every month for the last year, the figure for February 2013 shows a slight upward trend which is also reflected in the figures for burglaries where older people are victims.
- Burglary is now at its lowest level since 2002/03 when 18,531 were recorded. This represents a reduction of 51% in less than 10 years.
- In a comparison of burglary rates, PSNI is below all of our Most Similar Force Groups and below the England and Wales average.
- Numbers of burglaries/robberies against older persons, whilst still at a low level compared to the high point of 1,691 in February 2010, have seen a slight increase this month with 11 more crimes in this category.
- This year so far – just under 1000 fewer victims of burglary and 169 fewer older people were victims of burglary and robbery.



## Road Casualties

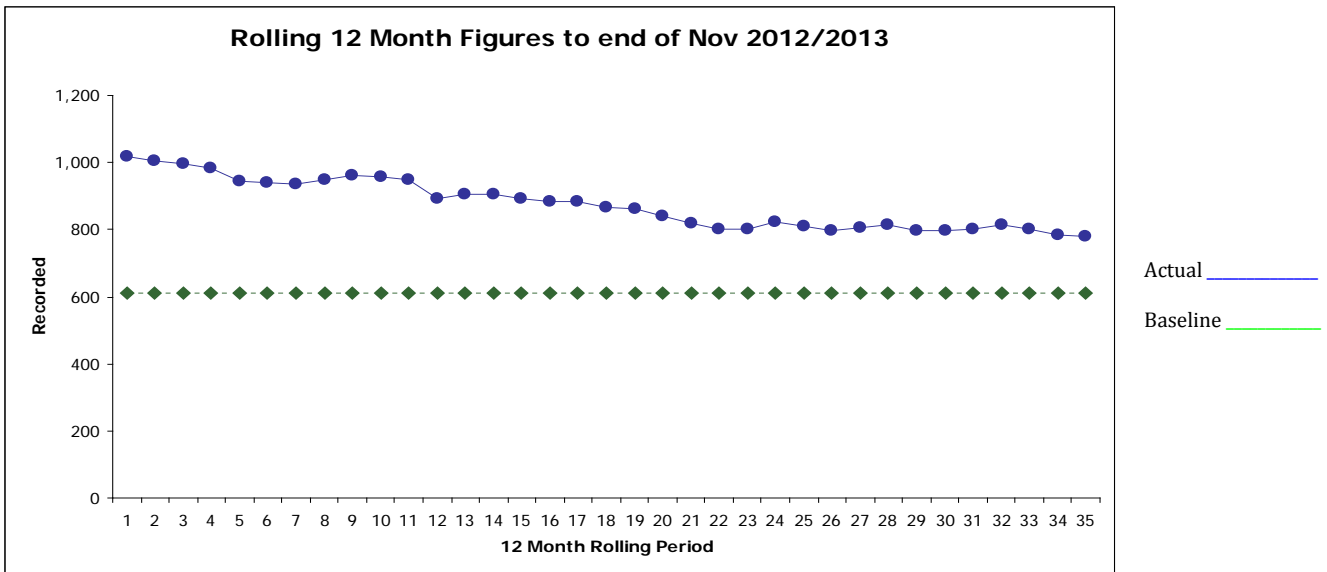
The number of people killed in road collisions– Most recent 12 months			
<i>2011/2012</i>	<i>1 Feb 12 – 28 Feb 13</i>	<i>Change</i>	<i>% Change</i>
<b>52</b>	<b>52</b>	<b>-0</b>	<b>na</b>
The number of people killed in road collisions – Financial Year to date comparison			
<i>1 Apr 11 – 30 Nov 11</i>	<i>1 Apr 12 – 30 Nov 12</i>	<i>Change</i>	<i>% Change</i>
<b>38</b>	<b>32</b>	<b>-6</b>	<b>-15.8%</b>
The number of people killed in road collisions – 3 Year trend			

The graphic below illustrates the pattern of reduction in people killed on the roads over the 35 months to October 2012. The base line represents the target of a 60% reduction **by 2020**. (From the Road Safety Strategy)



The number of people seriously injured in road collisions– Most recent 12 months			
2011/2012	1 Dec 11 – 30 Nov 12	Change	% Change
806	781	-25	-3.1%
The number of people seriously injured in road collisions – Financial Year to date comparison			
1 Apr 11 – 30 Nov 11	1 Apr 12 – 30 Nov 12	Change	% Change
565	540	-25	-4.4%
The number of people seriously injured in road collisions – 3 Year trend			

This graphic illustrates the pattern of reduction in people killed on the roads over the past 35 months. The base line represents the target of a 60% reduction by 2020. (From the Road Safety Strategy)



### Further Analysis – People Killed and Seriously Injured on the Roads

- Road traffic collision figures published on 3 January 2013 report a total of 48 fatalities during the 2012 **calendar** year (2011 total = 59). This is the lowest annual level of road deaths recorded since records began in 1931.
- The number of Children (0 – 15 years) killed during 2012 was an increase of 3 on the 2011 total (from 2 to 5).
- So far this month (February) there have been 3 fatalities, 2 more than the total for February 2012.

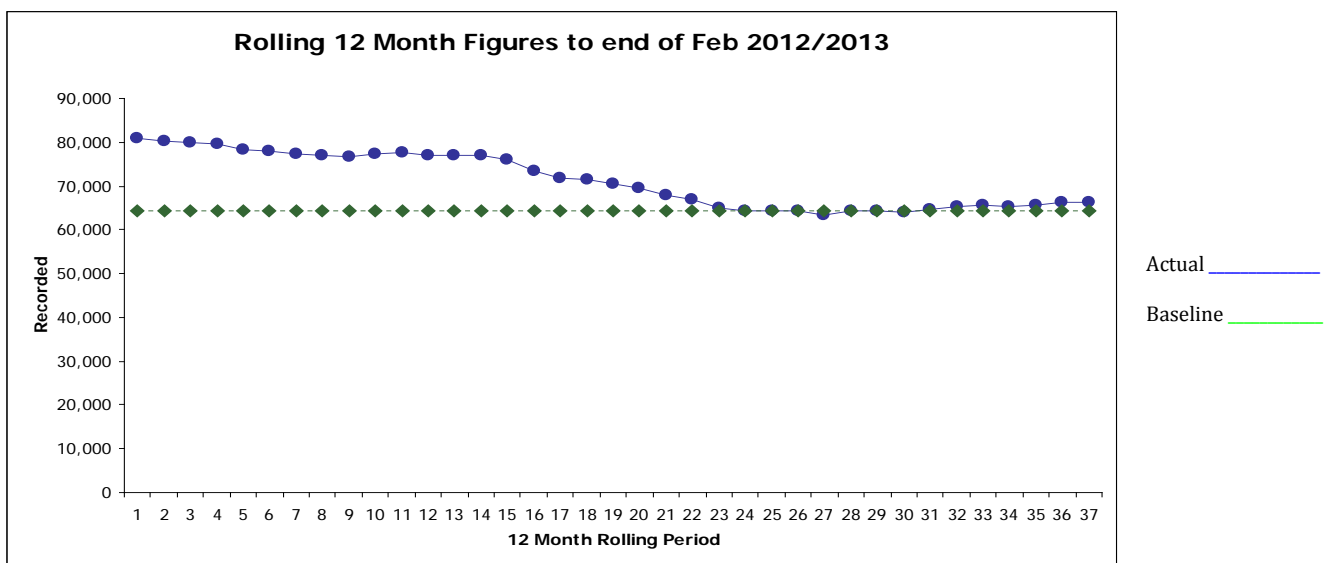
### Key Points:

- Deaths on Northern Ireland’s roads continue to fall. The significant reductions of recent years are being maintained and the “Road Safety to 2020” targets are already met or within reach, with seven years remaining.
- Serious Injuries on the roads have levelled out recently, but the overall trend remains downwards.

## Antisocial Behaviour

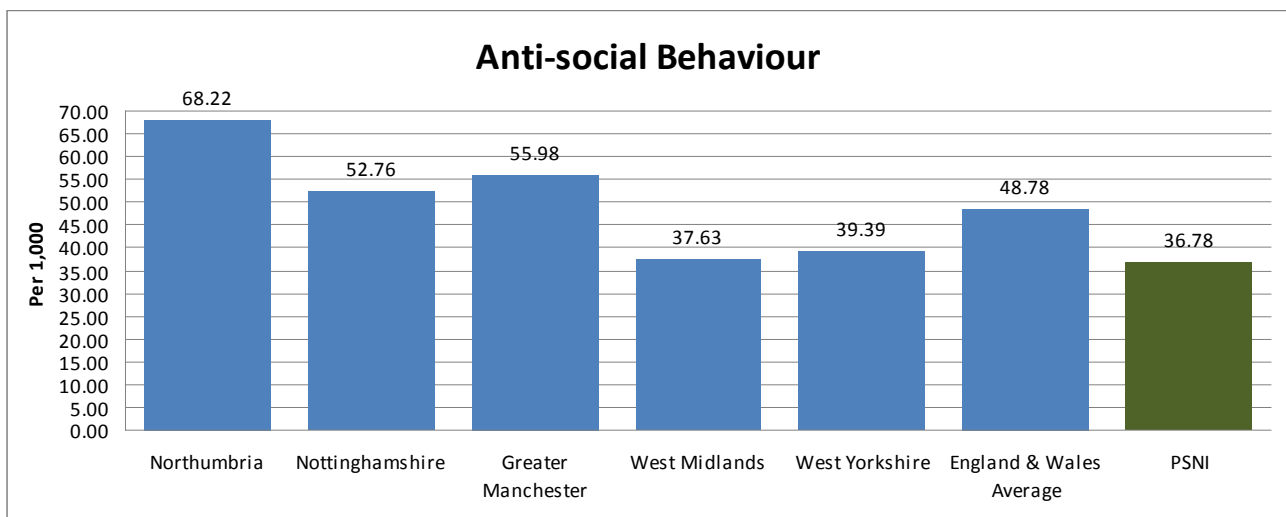
The number of antisocial behaviour incidents– Most recent 12 months			
2011/2012	16 Mar 12– 15 Mar 13	Change	% Change
<b>64,184</b>	<b>66,310</b>	<b>+2,126</b>	<b>+3.3%</b>
The number of antisocial behaviour incidents– Financial Year to date comparison			
1 Apr 11 – 14 Mar 13	1 Apr 12 – 14 Mar 13	Change	% Change
<b>60,439</b>	<b>62,565</b>	<b>+2,126</b>	<b>+3.5%</b>
The number of antisocial behaviour incidents – 3 Year trend			

The graphic below illustrates the pattern of reduction in antisocial behaviour incidents over the past 37 months. The base line represents the 2011/12 Financial Year figure of 64,184.



### Further Analysis – Antisocial behaviour:

The chart below compares crime rates per 1,000 people using our Most Similar Force group and an average of all England and Wales Police Forces. This was compiled using most recent PSNI data and the most recent data published by HMIC.



## **Further Analysis - Perception of high levels of antisocial behaviour.**

- The NI Crime Survey, Quarterly update for December 2012 reports that 11.1% of people consider levels of antisocial behaviour in their local area to be “High”. This shows a fall of 0.6% when compared to the previous yearly figure of 11.7%.

## **Key Points**

- Anti-social behaviour incidents have decreased year on year since 2007/08, however the latest twelve months to February 2013 is currently showing an increase on the 2011/12 total.
- Anti social behaviour is now running at a higher yearly level than in the corresponding period last year and for the last 7 months is showing a rising trend for the first time in three years. The last four months (Oct 12-Feb 13) have all shown higher levels of ASB than the corresponding months in 2011/12.
- Analysis of the effect of recent disorder would indicate an increase in anti social behaviour levels in B and G Districts, with G district seeing a rise of almost 10% between this financial year and the previous financial year.
- In comparison with the MSF Group and the England and Wales average, Northern Ireland continues to experience low levels of ASB.

## Professional Policing – Improved satisfaction with policing

### Explanatory Note:

Professional Policing means providing an excellent service. It is about being visible, available and responding to need, getting things right first time and winning trust and confidence. It also relates to professionalism in how we manage our budget whilst retaining our operational capability.

Performance in the area of service delivery is measured by examining statistics on complaints, the use of police discretion and the proportion of officers time spent on patrol.

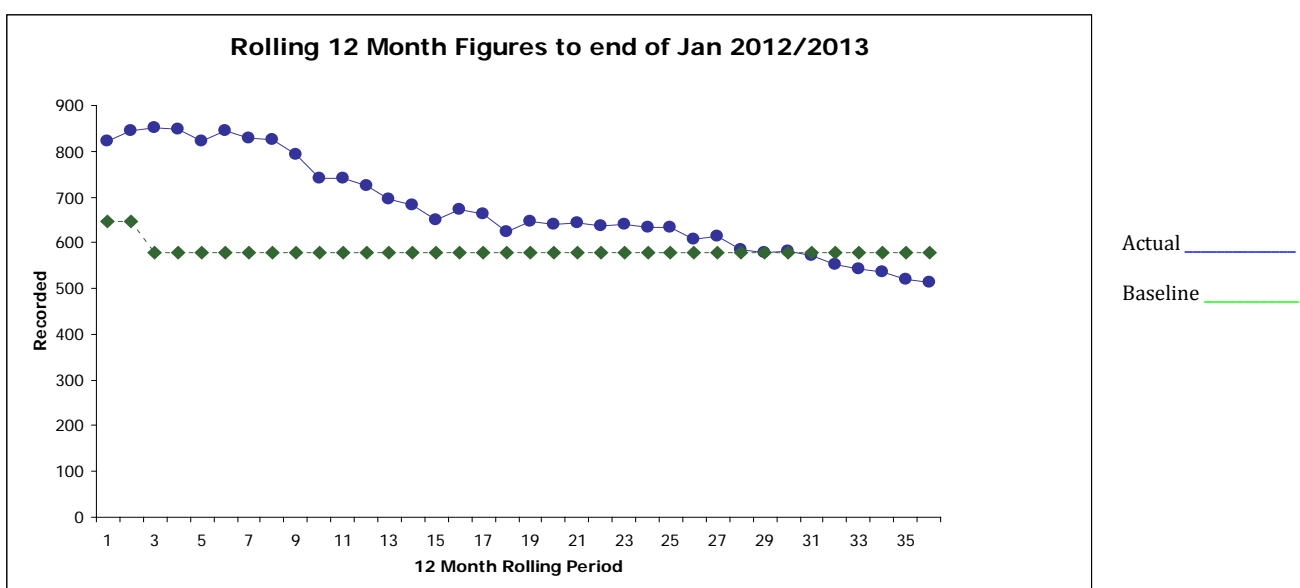
This data is sourced from the Police Ombudsman’s Office and data collected by the police service on case disposal and officer deployments.

There are separate reporting arrangements for the continuous improvement initiatives that make up the remainder of this section of the policing plan.

## Incivility

The number of allegations of incivility – Most recent 12 months			
2011/2012	1 Feb 12 – 31 Jan 13	Change	% Change
608	512	-96	-15.8%
The number of allegations of incivility – Financial year to date comparison			
1 Apr 11 – 31 Jan 12	1 Apr 12 – 31 Jan 13	Change	%Change
517	421	-96	-18.6%
The number of allegations of incivility – 3 year trend			

This graphic illustrates the pattern of reduction in allegations of incivility against police officers over the past 36 months. The longer base line represents the 2011/12 Financial Year figure of 608.



## Further Analysis – Incivility :

- Figures from April 2012 to end Jan 2013 show a 3.6 % decrease in the number of complaints compared to the same period last year. However, in the same period there has been a 4.9% rise in complaints generally in Urban region primarily due to 8.4% increase in A District and 18.2% increase in B District. There has been a 16.6% decrease in Rural region (decreases in all four districts).
- There has been a 14.9% decrease in allegations for the same period.
- All three main allegation categories have seen encouraging falls for the same period: Incivility allegations have reduced by 18.5%; Oppressive behaviour reduced by 22%; Failure in duty by 12.5%.

## The use of Police Officer discretion

The number of cases resolved by the use of discretion			
2011-2012	8 Mar 12 – 14 Mar 13	Change	% Change
5,487	5,956	469	+8.5%

## The amount of time spent by each officer on patrol

The amount of time spent by each officer on patrol		
March 2012	February 2013	Change
57.02%	60.24%	+3.22%

\*Each increase of 5% in this measure is estimated to represent an increase of 30 minutes per officer per duty shift based on a 10 hour shift pattern

## Key Points:

- The use of discretion as a method of case disposal continues to increase.
- Officers are now spending more than 60% of their time on patrol, contributing greatly to increased visibility of police and the reassurance that visibility brings to the public. This represents a complete reversal of the baseline figure, when officers were spending more than 60% of their time in stations. (Quoted in the 2009 Strategic Review.)
- The percentage increase of time spent on patrol has almost doubled in the period January 2013 to February 2013. The January figure was 1.81%, and the February figure is 3.22%.

## Protective Policing – Vulnerable people are protected

### Explanatory Note:

Protective Policing means ensuring that the public are kept safe from risks and threats to safety. It is also about improving our service to victims of crime, in particular the most vulnerable in society.

Performance in this area is measured by examining police statistics on violent crime reduction, action on tackling organized crime and qualitative information on how we are improving our service to vulnerable groups. This qualitative information is reported separately to the Ni Policing Board.

We are also focusing on the impact of alcohol consumption on crime.

## Organised Crime

The number of organised crime gangs frustrated, disrupted and dismantled				
	<i>Frustrated</i>	<i>Disrupted</i>	<i>Dismantled</i>	<i>Total No. of OCGs Currently Monitored</i>
1 Apr 12 – 19 Feb 12	<b>39 (34)</b>	<b>45 (41)</b>	<b>23 (23)</b>	<b>166</b>

\*Bracketed figures represent detail as at 31/12/12

The number and amount of interventions into criminal finances			
	<i>Previous Financial Year (Apr 11 – Feb 12)</i>	<i>Current Financial Year (Apr 12 – Feb 13)</i>	<i>Change</i>
Number of Interventions	<b>219</b>	<b>166</b>	<b>-53</b>
Value of Cash Seizures	<b>£1,383,247</b>	<b>£1,691, 296</b>	<b>+£308,049</b>
Value of Confiscation Orders	<b>£669,485</b>	<b>£929,070</b>	<b>+£259,585</b>

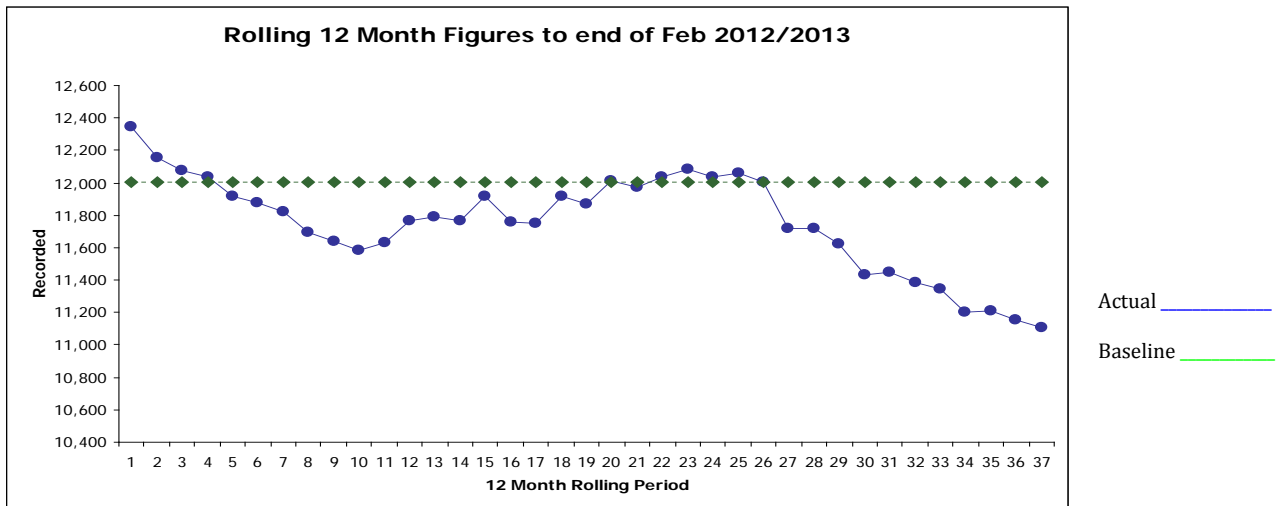
## Action taken to reduce the harm caused by drugs

The number of drug seizures – Most recent 12 months			
<i>2011/12</i>	<i>1 Feb 12 – 28 Feb 13</i>	<i>Change</i>	<i>% Change</i>
<b>3,920</b>	<b>4,334</b>	<b>414</b>	<b>+10.6%</b>
The number of drug seizures – Financial year to date comparison			
<i>1 Apr 11 – 28 Feb 12</i>	<i>1 Apr 12 – 28 Feb 13</i>	<i>Change</i>	<i>% Change</i>
<b>3,561</b>	<b>3,975</b>	<b>414</b>	<b>+11.6%</b>

## Non domestic violence crimes involving injury

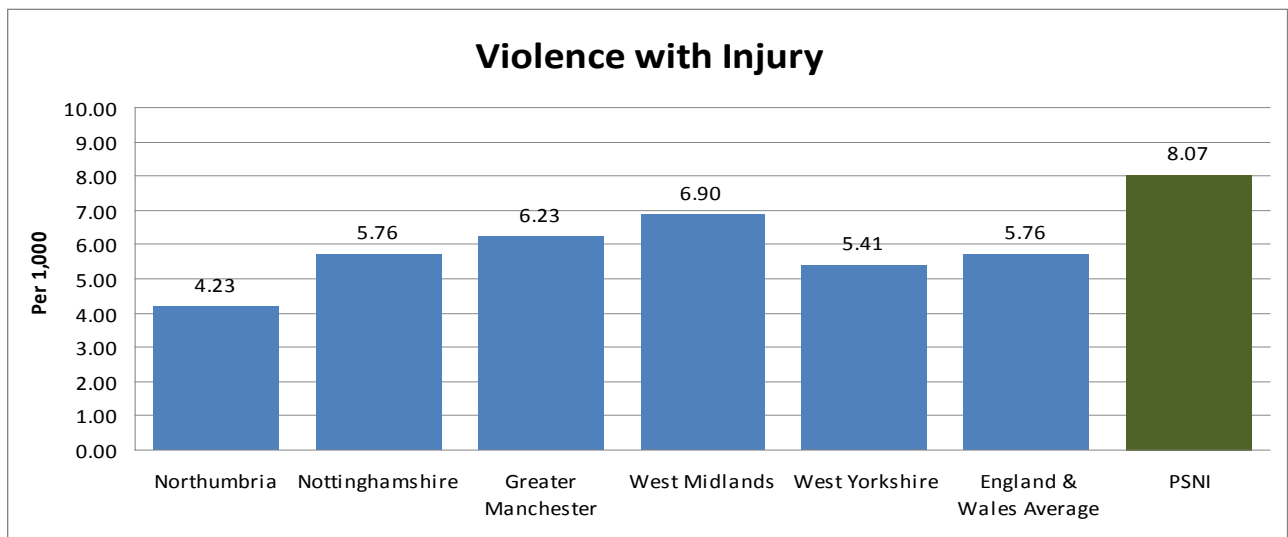
The number of non domestic violent crimes involving injury - Most recent 12 months			
2011-2012	12 Mar 12 – 11 Mar 13	Change	% Change
<b>12,006</b>	<b>11,144</b>	<b>-862</b>	<b>-7.2%</b>
The number of non domestic violent crimes involving injury - Financial year to date comparison			
1 Apr 11 – 11 Mar 12	1 Apr 12 – 11 Mar 13	Change	% Change
<b>11,386</b>	<b>10,524</b>	<b>-862</b>	<b>-7.6%</b>
The number of non domestic violent crimes involving injury - 3 year trend			

This graphic illustrates the pattern of reduction in Violent Crimes involving Injury over the past 37 months. The base line represents the 2011/12 Financial Year figure of 12,006.



### Further Analysis:

The chart below compares crime rates per 1,000 people using our Most Similar Force group and an average of all England and Wales Police Forces. This was compiled using most recent PSNI data and the most recent data published by HMIC.





## Alcohol related crime

### The number of antisocial behaviour incidents where alcohol is a contributory factor

Financial Year to date - 1 Apr 12 – 14 Mar 13			
	<i>All</i>	<i>Alcohol related</i>	<i>Alcohol as % of all</i>
ASB Incidents	<b>62,565</b>	<b>7,900</b>	<b>12.6%</b>

### The number of crimes where alcohol is a contributory factor (by crime type)

	FYTD Recorded			FYTD Detection Rate	
	<i>All</i>	<i>Alcohol related</i>	<i>Alcohol as % of all</i>	<i>All</i>	<i>Alcohol related</i>
Domestic violence with injury	3370	2034	60.4%	38.2%	37.9%
Non domestic violence with injury	10524	5890	56.0%	31.5%	29.5%
Violence without injury	14939	5606	37.5%	33.6%	43.6%
Most serious sexual crime	1485	327	22.0%	19.2%	15.6%
Criminal Damage	20220	2608	12.9%	12.9%	38.2%
Total all crime	94277	18748	19.9%	26.3%	37.8%

#### Further Analysis:

During the month of January 2013, 29% of all those arrested had consumed alcohol. This figure is the average figure for such arrests over a 10 month period.

#### Key Point:

- The data collected suggests that, 12 months into this research, around 58% of all violence with injury crimes have alcohol as a contributory factor.
- The level of non-domestic violent crime continues to fall overall, with all districts bar one showing a decrease in figures when this financial year is compared to the previous financial year.