

Police Service of Northern Ireland

Police Recorded Crime in Northern Ireland: Monthly Update to 30 April 2015

Published 04 June 2015

Police Recorded Crime in Northern Ireland: Monthly Update to 30 April 2015

Published 04 June 2015

This monthly bulletin presents the most recent police recorded crime statistics, relating to crimes recorded by the police to 30th April 2015. Figures were compiled on the 2nd June 2015, using data extracted from the police administrative system on that date. Figures dating back to 1st April 2015 are provisional and will be subject to change until the finalised 2015/16 data are published in May 2016.

Assessment of police recorded crime in Northern Ireland

In January 2014 the UK Statistics Authority cancelled the designation of police recorded crime statistics in England & Wales in January 2014 because of concerns regarding the quality and integrity of police recorded crime in England & Wales; the lack of assurance of the data integrity in Scotland resulted in the designation of these statistics being cancelled in July 2014.

As a result of these concerns, the Authority commenced an assessment of police recorded crime in Northern Ireland in June 2014. In addition to this assessment, Her Majesty's Inspectorate of Constabulary (HMIC) were invited to conduct a crime data integrity audit within PSNI during September 2014 similar to those they conducted in England & Wales during 2014. The outcome of the audit was published on 19th March 2015 in the report [Crime data integrity – inspection of the Police Service of Northern Ireland](#). The main findings in relation to data quality were:

- a crime recording accuracy rate of 97 per cent with a confidence interval of +/-2 per cent;
- 98 per cent of crimes correctly classified; and
- 84 per cent recorded within the 72-hour limit allowed under the Home Office Counting Rules.

The UK Statistics Authority assessment was concluded after the publication of the HMIC report; the Authority's [assessment report Number 301 Statistics on Police Recorded Crime in Northern Ireland \(Police Service of Northern Ireland\)](#) was published on 28th May. This report judged that the police recorded crime statistics in Northern Ireland can be designated as National Statistics (subject to implementing two requirements and reporting on these to the Authority by December 2015).

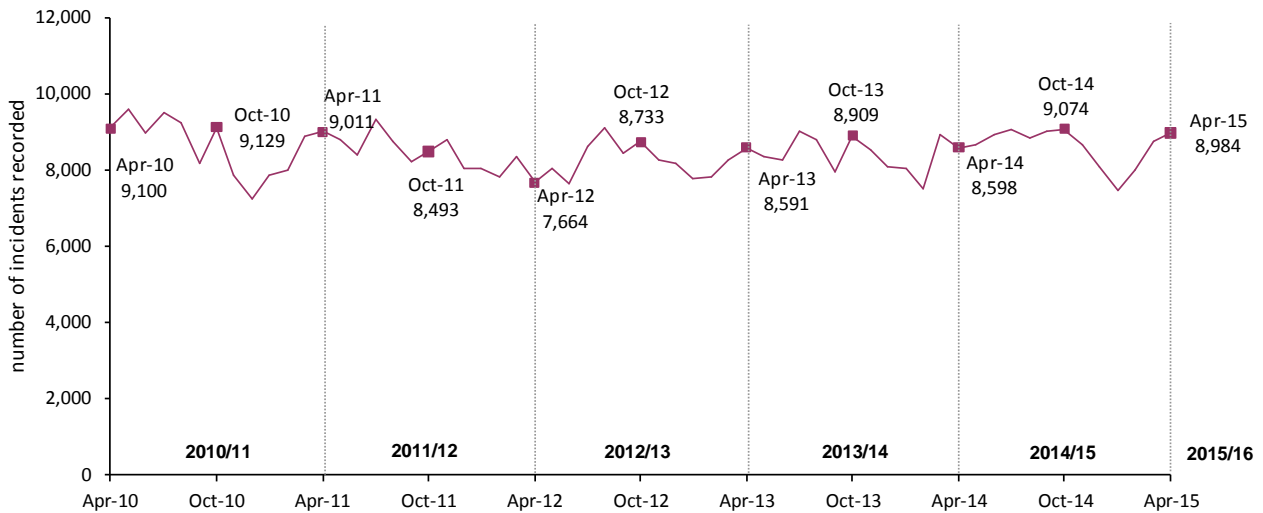
Introduction of Action Fraud within Northern Ireland: From 1st April 2015 Action Fraud has taken responsibility for the central recording of fraud offences previously recorded by PSNI; Action Fraud became responsible for all such reports in England & Wales by 1st April 2014. Action Fraud is the UK's National Reporting Centre for fraud and internet crime reported directly to them from the public and other organisations. While this means that these fraud offences are no longer recorded by PSNI, Action Fraud figures relating to victims residing in Northern Ireland will be provided to PSNI on a monthly basis. As a result, this bulletin will contain a section on 'other fraud' which will present combined PSNI and Action Fraud figures covering the last two years. All other sections within the bulletin will present figures on a comparable basis that exclude 'other fraud'.

Change to policing boundaries as a result of implementing the Review of Public Administration: As part of the Review of Public Administration which came into effect on 1st April 2015, PSNI has moved from eight to eleven policing districts. The geographic breakdown presented in this bulletin and in the accompanying excel spreadsheets are presented on the basis of these new boundaries. As it will take up to six months to have the new policing model fully in place, the figures presented here are a best approximation to the new boundaries and may be revised later in the year.

OVERALL CRIME TRENDS (excluding fraud)

- Crime has shown a downwards trend over the last ten years, from a peak of 138,132 in 2002/03 to 98,558 recorded in 2012/13, the lowest level recorded since 1998/99 (the first year for which comparable crime data is available). The level of 103,562 recorded during the twelve months to 30th April 2015 shows an increase of 386 (0.4%) on the 2014/15 figure of 103,176.
- Crime increased by 2.6 percent (2,638 offences) in the twelve months to April 2015 when compared with the previous twelve months. The majority of this increase was in the category of violence without injury, with smaller levels of increase in drug offences and sexual offences.
- At 8,984 the level of crime recorded in April 2015 was 4.5 per cent (386 offences) higher than the level recorded in April 2014.

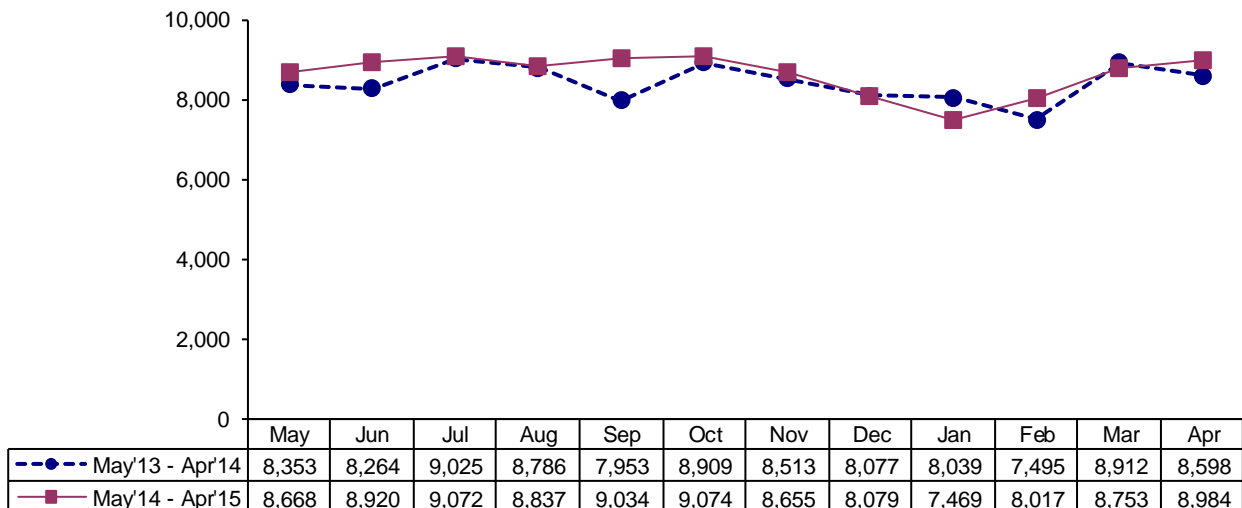
Figure 1 Total number of crimes each month from April 2010 to April 2015 (excluding fraud)



COMPARISON OF CURRENT AND PREVIOUS 12 MONTHS, excluding fraud (May 2013 to April 2014 with May 2014 to April 2015)

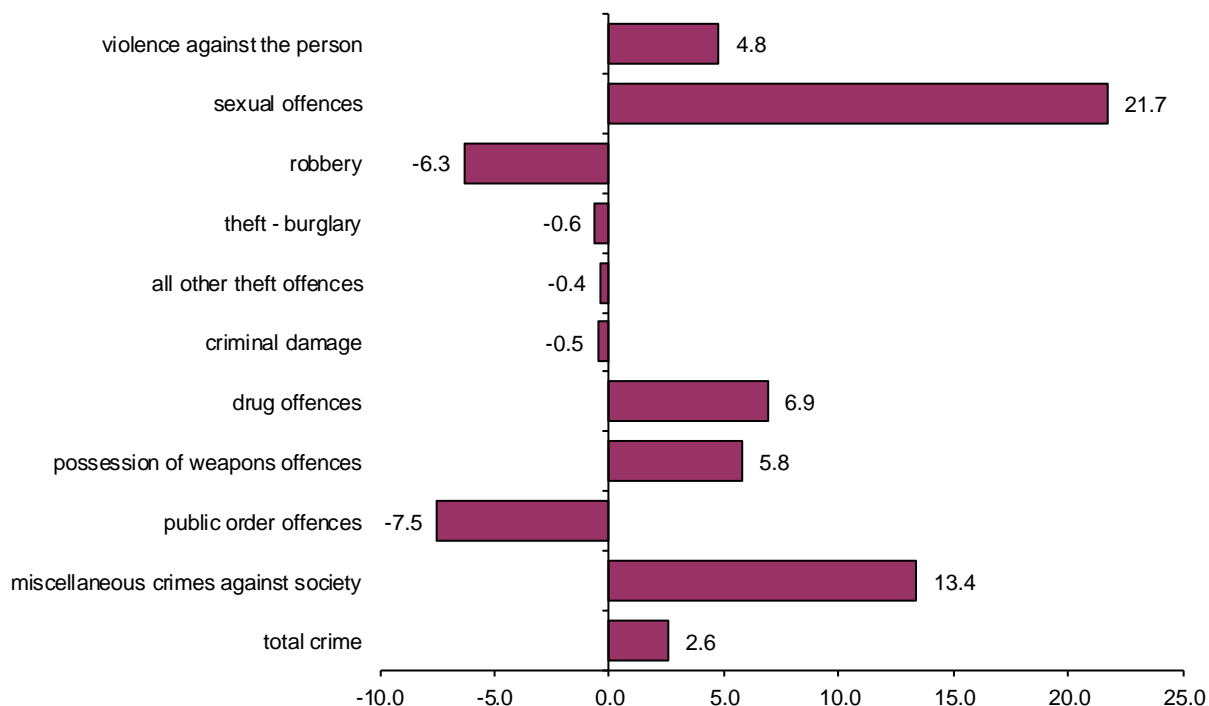
- Overall crime increased by 2.6 per cent in the twelve months to 30th April 2015 when compared with the twelve months to 30th April 2014. The crime level showed a mainly downwards direction between July 2013 (9,025 offences) and February 2014 when 7,495 offences were recorded, the third lowest monthly figure recorded since the data series began in April 1998. Since then the level of crime has been generally increasing, reaching a two-year high of 9,074 in October 2014, before decreasing each month to a level of 7,469 in January 2015, the lowest figure recorded in the past two years and the second lowest monthly figure since the data series began in April 1998. The level of recorded crime has increased in each of the last three months to stand at 8,984 in April 2015.

Figure 2 Total number of crimes each month from May 2013 to April 2015 (excluding fraud)



- Recorded crime figures by type of crime for May 2014 to April 2015 compared with May 2013 to April 2014 are shown in Table 2. Overall crime outcomes and outcomes by type of disposal covering the same time periods are available in Tables 3 and 4. Between May 2014 and April 2015 there were four outcomes where no action was taken against the offender (indictable only offences where the offender died before proceedings or PPS did not prosecute), with four recorded between May 2013 and April 2014; these outcomes are included in the rates presented in Table 3 but are not presented as separate disposal types in Table 4.

Figure 3 Percentage change in the main recorded crime types, May 2014 to April 2015 compared with May 2013 to April 2014



- Trends over the last two years:** The main crime categories of violence against the person, sexual offences, drug offences and other crimes against society have shown upwards trends over the last two years, with public order offences showing a downwards trend. The trends for robbery, theft offences criminal damage and possession of weapons offences have been fairly flat.
- Violence with injury (including homicide)** has shown a flat trend over the last two years with the lowest level seen in January 2014 (1,009 offences) and the highest level recorded in August 2014 (1,372 offences). Since January 2014 the number of crimes recorded has shown an overall increasing trend until August 2014 before falling to 1,087 in January 2015. There were 1,172 offences recorded in April 2015. The trend for **violence without injury** has been in an upwards direction over the last two years. Levels fluctuated between May 2013 (1,494 offences) and November 2013 (1,604 offences) followed by an overall downward trend to 1,367 recorded in February 2014 (lowest figure in last two years). The upward trend then resumed, reaching a two-year high in July 2014 with 1,908 offences recorded; the level generally decreased to 1,388 offences in January 2015 before increasing to the current level of 1,538 offences in April 2015.
- Sexual offences** have been showing an upwards trend over the last two years. The level followed a generally upwards trend from May 2013 to October 2013, when 210 offences were recorded before falling to 157 offences recorded in December 2013. The upwards trend resumed until October 2014 to a level of 274 offences recorded, the highest in the last 24 months, before falling to 164 offences in December 2014, the second lowest figure in the last two years. There were 211 offences in recorded in April 2015.
- Robbery** has shown a flat trend over the last two years. The number of robberies recorded generally fell between July 2013 and September 2013 when 50 offences were recorded, the lowest monthly figure in the last two years. Levels then increased each month to January 2014 when 104 offences were recorded; this was the highest level over the last 24 months. As with the previous year, the level generally decreased to July 2014 with 52 offences recorded, before increasing in each consecutive month to 102 offences recorded in December 2014. This is the highest level recorded since January 2014; the level has since fallen to 68 offences recorded in April 2015.
- Domestic burglaries:** Over the last two years domestic burglaries showed an upwards trend. March 2015 and February 2015 have recorded the highest (573 offences) and second highest (546 offences) figures while the level recorded in April 2015 was the fifth highest during this time period (529 offences). The lowest level was 419 recorded in June 2013. The trend seen in April 2014 to November 2014 is similar to that in the same period in the previous year, with a downwards trend between April and August followed

by a general increase. **Non-domestic burglaries** have shown a downwards trend over the last two years with figures tending to fluctuate month to month; the highest level in the last 24 months was 315 recorded in March 2014 and the lowest level of 211 offences was recorded in January 2015. The current level for April 2015 stands at 284 recorded crimes.

- The classification of theft offences (excluding burglary) has shown a fairly flat trend over the last two years. Within this classification the following trends can be seen:

Theft from the person has shown a similar flat trend; the highest level in the past 24 months was seen in October 2013 when 70 offences were recorded, while the lowest month January 2015 when 26 offences were recorded. The current level recorded in April 2015 is 41 offences.

Vehicle offences showed a slight downwards trend over the past two years. A two-year high of 588 offences in January 2014 was followed by a level of 386 in February 2014 with a further increase to 508 offences in March 2014. Levels have generally fluctuated over the past few months, with a two-year low of 347 offences in January 2015 and a level of 410 in April 2015.

Shoplifting offences have shown a fairly flat trend, with a peak of 659 offences in October 2013, the highest level recorded in the last two years. While this was followed by a fall to 487 offences recorded in January 2014, the increasing trend then resumed to reach 614 offences recorded in November 2014. The level fell to the two lowest levels in the past two years with 439 offences recorded in January 2015 and 450 offences recorded in February 2015. There were 533 offences recorded in April 2015.

Bicycle theft showed a steady increase from May 2013 to reach 159 in August 2013; the level then fell each month to 47 offences recorded in December 2013 before showing an increasing trend to September 2014 (134 offences). As with the previous year, the figure has since fallen sharply to a two-year low of 36 offences recorded in January 2015 before rising to a level of 80 offences in April 2015.

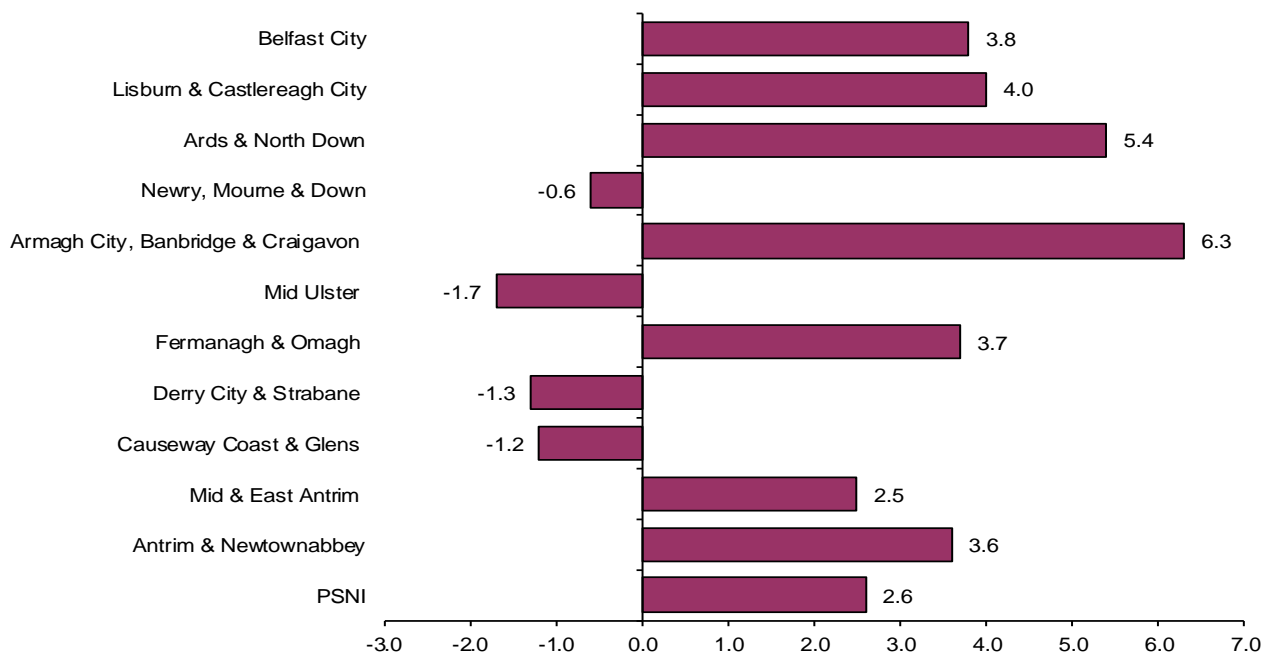
All other theft offences have shown a fairly flat trend since May 2013. There was a general downward trend until February 2014. Levels have since been generally increasing, reaching 1,201 offences recorded in October 2014 which is the highest level in the past two years. The level currently stands at 1,199 recorded in April 2015, the second highest level in past two years. A factor which may have contributed to the higher levels recorded between May 2014 and April 2015 compared with the previous 12 months is a change in the Home Office Counting Rules, introduced in April 2014, which has resulted in more offences of making off without payment being recorded (mainly non payment of fuel at petrol stations). This change has made it more difficult for these crimes to meet the criteria which allow the offences to be no crime'd.

- **Criminal damage** offences have seen a generally flat trend over the last two years. Levels increased in most of the months between May 2013 (1,538 recorded) and July 2013 (1,905 recorded) and then tended to fall between July 2013 and February 2014 when the second lowest figure in the last two years of 1,414 was recorded. Since then levels have again been in an upwards direction reaching 1,844 in October 2014, the third highest level since May 2013. The number of criminal damage offences then fell to 1,321 offences in January 2015; since then the level has increased each month to 1,781 in April 2015.
- **Outcomes where disposal administered:** The overall rate has shown a fairly flat trend, which has been reflected across most of the main crime types.

POLICING DISTRICT COMPARISON OF CURRENT AND PREVIOUS 12 MONTHS, excluding fraud (May 2013 to April 2014 with May 2014 to April 2015)

As part of the Review of Public Administration which came into effect on 1st April 2015, PSNI has moved from eight to eleven policing districts. Figure 4 below is presented on the basis of these new boundaries. As it will take up to six months to have the new policing model fully in place, the figures presented here are a best approximation to the new boundaries and may be revised later in the year.

Figure 4 Percentage change in recorded crime by policing district, May 2014 to April 2015 compared with May 2013 to April 2014 (excluding fraud)



- Belfast City has shown an increasing crime trend over the past two years. The lowest crime level was recorded in February 2014 (2,512) and this was followed by an overall increasing trend to September 2014 (third highest recorded at 3,146). Levels then decreased each month to 2,544 crimes in January 2015. Since then the level has increased each month to reach 3,172 crimes in April 2015, the second highest figure recorded in the last two years.
- Lisburn and Castlereagh City has shown an increasing trend over the past two years with the highest level recorded in March 2015.
- Crime levels recorded in Ards & North Down have been fairly flat over the past two years, however the level recorded in the past 12 months is higher than that in the previous 12 months.
- The crime level was higher in April 2015 compared with April 2014 in all districts with the exception of Mid Ulster, Fermanagh and Tyrone, Derry City & Strabane and Causeway Coast and Glens where a lower level was recorded.

RECORDING OF FRAUD

From 1st April 2015 Action Fraud has taken responsibility for the central recording of fraud offences previously recorded by PSNI; Action Fraud became responsible for all such reports in England & Wales by 1st April 2014. Action Fraud is the UK's National Reporting Centre for fraud and internet crime reported directly to them from the public and other organisations. While this means that these fraud offences are no longer recorded by PSNI, Action Fraud figures relating to victims residing in Northern Ireland will be provided to PSNI on a monthly basis. The table below incorporates both sets of figures to show the number of fraud offences recorded by PSNI and Action Fraud over the last two years.

Table 1 Number of fraud offences recorded in the 12 months to 30th April 2015 compared with the previous 12 months

	12 months to Apr'14	12 months to Apr'15
PSNI recorded fraud	1,828	1,729
Recorded by Action Fraud	-	173
Combined fraud figure	1,828	1,902

Table 2 Number of recorded crimes in the 12 months to 30th April 2015 compared with the previous 12 months

Offence group	Number and percentage changes			
	12 months to April 2014	12 months to April 2015 ^{1,2}	change between years	% change between years ³
VICTIM-BASED CRIME				
VIOLENCE AGAINST THE PERSON	32,614	34,179	1,565	4.8
<i>Homicide</i>	20	25	5	-
<i>Violence with injury</i>	14,237	14,370	133	0.9
<i>Violence without injury</i>	18,357	19,784	1,427	7.8
SEXUAL OFFENCES	2,253	2,742	489	21.7
<i>Rape</i>	559	739	180	32.2
<i>Other sexual offences</i>	1,694	2,003	309	18.2
ROBBERY	938	879	-59	-6.3
<i>Robbery of personal property</i>	702	630	-72	-10.3
<i>Robbery of business property</i>	236	249	13	5.5
THEFT OFFENCES	35,743	35,586	-157	-0.4
<i>Burglary</i>	9,017	8,962	-55	-0.6
<i>Domestic burglary</i>	5,739	5,889	150	2.6
<i>Non-domestic burglary</i>	3,278	3,073	-205	-6.3
<i>Theft from the person</i>	570	520	-50	-8.8
<i>Vehicle offences</i>	5,582	5,039	-543	-9.7
<i>Bicycle theft</i>	1,084	974	-110	-10.1
<i>Shoplifting</i>	6,354	6,522	168	2.6
<i>All other theft offences</i>	13,136	13,569	433	3.3
CRIMINAL DAMAGE	19,931	19,826	-105	-0.5
OTHER CRIMES AGAINST SOCIETY				
DRUG OFFENCES	4,758	5,086	328	6.9
<i>Trafficking of drugs</i>	960	875	-85	-8.9
<i>Possession of drugs</i>	3,798	4,211	413	10.9
POSSESSION OF WEAPONS OFFENCES	720	762	42	5.8
PUBLIC ORDER OFFENCES	1,541	1,426	-115	-7.5
MISCELLANEOUS CRIMES AGAINST SOCIETY	2,426	2,751	325	13.4
TOTAL RECORDED CRIME – ALL OFFENCES (excluding fraud)	100,924	103,562	2,638	2.6

¹ Figures for the 12 months to 30th April 2015 are provisional and will be subject to change.

² Individual crime types may not add to Total Recorded Crime – All Offences as there will be some crimes yet to complete the validation process and be allocated to a crime classification.

³ ‘-’ indicates that for offences recorded a percentage change is not reported because the base number of offences is less than 50.

Table 3 Crime outcomes¹ in the 12 months to 30th April 2015 compared with the previous 12 months, rates (%)

Offence group	Percentages		
	Crime Outcomes ¹ (rate %)		% point change
	12 months to April 2014	12 months to April 2015 ²	
VICTIM-BASED CRIME			
VIOLENCE AGAINST THE PERSON	30.6	30.1	-0.5
<i>Homicide</i>	80.0	52.0	-28.0
<i>Violence with injury</i>	32.5	31.8	-0.7
<i>Violence without injury</i>	29.0	28.8	-0.2
SEXUAL OFFENCES	19.7	15.4	-4.4
<i>Rape</i>	15.0	10.6	-4.5
<i>Other sexual offences</i>	21.3	17.1	-4.1
ROBBERY	17.0	18.2	1.3
<i>Robbery of personal property</i>	12.4	16.0	3.6
<i>Robbery of business property</i>	30.5	23.7	-6.8
THEFT OFFENCES	19.6	20.3	0.7
<i>Burglary</i>	10.1	10.6	0.5
<i>Domestic burglary</i>	9.0	9.2	0.2
<i>Non-domestic burglary</i>	12.0	13.2	1.2
<i>Theft from the person</i>	5.3	7.3	2.0
<i>Vehicle offences</i>	16.6	18.3	1.7
<i>Bicycle theft</i>	4.2	4.3	0.2
<i>Shoplifting</i>	59.9	60.0	0.1
<i>All other theft offences</i>	9.7	10.1	0.3
CRIMINAL DAMAGE	15.7	16.3	0.6
OTHER CRIMES AGAINST SOCIETY			
DRUG OFFENCES	80.6	83.7	3.1
<i>Trafficking of drugs</i>	72.6	80.5	7.9
<i>Possession of drugs</i>	82.6	84.4	1.7
POSSESSION OF WEAPONS OFFENCES	64.6	63.8	-0.8
PUBLIC ORDER OFFENCES	54.4	55.6	1.2
MISCELLANEOUS CRIMES AGAINST SOCIETY	59.2	55.5	-3.7
TOTAL RECORDED CRIME – ALL OFFENCES (excluding fraud)	27.0	27.5	0.5

¹ Outcomes presented here include charge/summons, cautions (adult and juvenile), discretionary disposals, penalty notices for disorder, offences taken into consideration and indictable only offences where no action was taken against the offender (died before proceedings or PPS did not prosecute).

² Figures for the 12 months to 30th April 2015 are provisional and will be subject to change.

Table 4 Crime outcomes by type of disposal¹ in the 12 months to 30th April 2015 compared with the previous 12 months, rates (%)

Offence group	Percentages									
	Charge/summons		Caution		Discretionary disposal		Penalty notice for disorder ²		Taken into consideration	
	12 months to April 2014	12 months to April 2015 ³	12 months to April 2014	12 months to April 2015 ³	12 months to April 2014	12 months to April 2015 ³	12 months to April 2014	12 months to April 2015 ³	12 months to April 2014	12 months to April 2015 ³
VICTIM-BASED CRIME										
VIOLENCE AGAINST THE PERSON	25.6	25.4	2.8	2.2	2.1	2.5	0.1	0.0	0.0	0.0
<i>Homicide</i>	75.0	52.0	0.0	0.0	0.0	0.0	0.0	0.0	0.0	0.0
<i>Violence with injury</i>	27.7	27.5	3.0	2.3	1.7	2.0	0.0	0.0	0.0	0.0
<i>Violence without injury</i>	23.8	23.9	2.5	2.1	2.4	2.8	0.2	0.0	0.0	0.0
SEXUAL OFFENCES	17.9	14.2	1.2	0.7	0.4	0.4	0.1	0.0	0.0	0.0
<i>Rape</i>	14.8	10.3	0.0	0.0	0.0	0.0	0.0	0.0	0.0	0.0
<i>Other sexual offences</i>	18.9	15.6	1.6	0.9	0.6	0.5	0.1	0.0	0.0	0.0
ROBBERY	16.8	17.9	0.0	0.1	0.0	0.2	0.0	0.0	0.1	0.0
<i>Robbery of personal property</i>	12.3	15.6	0.0	0.2	0.0	0.3	0.0	0.0	0.1	0.0
<i>Robbery of business property</i>	30.5	23.7	0.0	0.0	0.0	0.0	0.0	0.0	0.0	0.0
THEFT OFFENCES	13.0	13.4	1.9	1.4	2.6	2.9	2.0	2.5	0.1	0.0
<i>Burglary</i>	9.3	9.8	0.5	0.5	0.2	0.2	0.0	0.0	0.1	0.0
<i>Domestic burglary</i>	8.6	8.6	0.2	0.4	0.2	0.2	0.0	0.0	0.0	0.0
<i>Non-domestic burglary</i>	10.4	12.1	0.9	0.8	0.4	0.3	0.0	0.0	0.3	0.1
<i>Theft from the person</i>	4.2	5.8	0.5	0.6	0.5	1.0	0.0	0.0	0.0	0.0
<i>Vehicle offences</i>	15.7	17.4	0.6	0.6	0.3	0.2	0.0	0.0	0.0	0.0
<i>Bicycle theft</i>	3.0	3.4	0.5	0.2	0.6	0.7	0.1	0.0	0.0	0.0
<i>Shoplifting</i>	31.8	32.4	6.9	4.9	9.9	9.2	11.2	13.6	0.0	0.0
<i>All other theft offences</i>	6.4	6.3	1.2	0.8	2.0	2.9	0.1	0.1	0.1	0.0
CRIMINAL DAMAGE	11.0	11.7	1.3	1.2	3.0	3.1	0.4	0.4	0.0	0.0
OTHER CRIMES AGAINST SOCIETY										
DRUG OFFENCES	48.2	51.7	23.8	21.7	8.6	10.2	0.0	0.0	0.0	0.0
<i>Trafficking of drugs</i>	64.8	73.5	7.1	6.4	0.7	0.6	0.0	0.0	0.0	0.0
<i>Possession of drugs</i>	44.0	47.2	28.1	24.9	10.6	12.3	0.0	0.0	0.0	0.0
POSSESSION OF WEAPONS OFFENCES	55.0	52.2	7.1	6.8	2.5	4.7	0.0	0.0	0.0	0.0
PUBLIC ORDER OFFENCES	51.0	54.2	3.1	1.3	0.3	0.1	0.1	0.0	0.0	0.0
MISCELLANEOUS CRIMES AGAINST SOCIETY	56.4	51.7	1.7	1.6	1.0	2.2	0.0	0.0	0.0	0.0
TOTAL RECORDED CRIME – ALL OFFENCES (excluding fraud)	20.4	20.9	3.1	2.6	2.7	3.0	0.8	0.9	0.0	0.0

¹ It is possible to detect a crime with an offence which attracts a lesser penalty than the crime recorded. For example where an assault occasioning actual bodily harm has been recorded (violence with injury), the offender may be dealt with for the offence of common assault (violence without injury). Outcomes where no action was taken against the offender are not presented.

² Penalty notices for disorder were introduced in June 2012.

³ Figures for the 12 months to 30th April 2015 are provisional and will be subject to change.

NOTES

Strengths and Limitations of Police Recorded Crime Statistics and Alternative Measures of Crime

While this monthly update presents the level of crime recorded by the police, there is an alternative but complementary measure of crime, the Northern Ireland Crime Survey (NICS) which is published by the Department of Justice for Northern Ireland. Each source of crime information has different strengths and limitations but can be looked at together to provide a more comprehensive picture of crime than could be obtained from either series alone. Details around the need for both recorded crime figures and the NICS can be found in paragraphs 1.2 and 1.3 of the bulletin [Experience of Crime: Findings from the 2013/14 Northern Ireland Crime Survey](#). Both of these measures of crime inform public debate about crime and support the development and monitoring of policy.

Unlike the Northern Ireland Crime Survey, police recorded crime figures do not include crimes that have not been reported to the police or those that the police decide not to record, but they do cover crimes against those aged under 16, organisations such as businesses, and crimes 'against the state' i.e. with no immediate victim (e.g. possession of drugs). It was estimated in 2013/14 that around 46 per cent of NICS comparable crime was reported to the police in Northern Ireland although this varied for individual offence types.

Like any administrative data, police recorded crime statistics are affected by the rules governing the recording of data, systems in place and operational decisions in respect of the allocation of resources. More proactive policing in a given area could lead to an increase in crimes recorded without any real change in underlying crime trends. These issues need to be taken into account when using these data.

Variations in crime trends: crime survey data and police recorded crime figures in England & Wales and Northern Ireland

An analysis of variation in crime trends looking at comparable crime categories between the Crime Survey for England and Wales (CSEW) and the police recorded crime series for England and Wales was conducted by the Office for National Statistics and published in January 2013. Updated analysis for England and Wales was made available in the [User Guide to Crime Statistics for England and Wales](#) in July 2014. This study identified that, while both sets of figures showed crime to be falling, after 2006/07 the rate of reduction for police recorded crime was around twice the rate of the CSEW. This raised questions about the quality of the police recorded crime figures and was one of the issues that led to the UK Statistics Authority removing the National Statistics designation from the police recorded crime figures in England and Wales. In Northern Ireland the police recorded crime figures did not show the same rate of decrease as either the Northern Ireland Crime Survey (NICS) or the police recorded crime figures in England and Wales. [Please note that the NICS was not conducted in 2002/03 and so comparisons were made instead with 2003/04. In addition, while NICS figures for 2013/14 are currently available, additional analysis has yet to be conducted for this time period to identify the comparable sub-set of crimes required to update the Northern Ireland figures below]. Further details can be found on page 5 of the [Police Recorded Crime Statistics User Guide](#).

Table 5 Percentage reduction in comparable crime categories 2002/03 to 2013/14 (England and Wales)

	Percentage change 2002/03-2007/08	Percentage change 2007/08-2012/13	Percentage change 2012/13-2013/14	Percentage change 2002/03-2013/14
Police recorded crime	-20	-32	-2	-47
CSEW	-16	-19	-14	-42

Table 6 Percentage reduction in comparable crime categories 2003/04 to 2012/13 (Northern Ireland)

	Percentage change 2003/04-2006/07	Percentage change 2006/07-2011/12	Percentage change 2011/12-2012/13	Percentage change 2003/04-2012/13
Police recorded crime	-7	-20	-3	-27
NICS	-28	-28	4	-46

Data Accuracy

Figures within the current financial year to date are provisional and will be subject to slight revision until finalised figures for the full financial year are published in May 2016. Within year, crime figures are subject to a validation and quality assurance process. The overall crime figures at Northern Ireland, District and Area level cover all records identified as crimes, including those that have not yet completed the validation process. However figures for each crime type do not include records which are under process and so these figures will not add to the overall total. The percentage of crimes complete and under process is shown in Table 7 below.

Table 7 Percentage of crime records that have completed the validation process, April 2015

	Percentages	
	% crime records complete	% crime records under process
Year to date: April 2015	96.4	3.6

Data Quality and Auditing

The quality assurance processes mentioned above have been set in place to ensure that the numbers and types of crimes being recorded are, as far as is possible, recorded in compliance with the Home Office Counting Rules. Further details of the data quality checks and processes that PSNI has in place are available in section 4 of the [User Guide to Police Recorded Crime Statistics in Northern Ireland](#).

As mentioned previously in this bulletin, in light of the crime recording issues in England & Wales and Scotland, Her Majesty's Inspectorate of Constabulary (HMIC) were invited to conduct a crime data integrity audit within PSNI during September 2014, similar to those they conducted in England & Wales during 2014. The outcome of the audit was published on 19th March 2015 in the report [Crime data integrity – inspection of the Police Service of Northern Ireland](#). The main findings in relation to data quality were:

- a crime-recording accuracy rate of 97 percent with a confidence interval of +/-2 percent;
- 98 percent of crimes correctly classified; and
- 84 percent recorded within the 72-hour limit allowed under HOCR.

Revisions

As mentioned above in relation to Data Accuracy, figures within the current financial year to date are provisional and will be subject to slight revision until finalised figures for the full financial year are published. This means that the totals for each month, crime type and policing district for each month from April 2015 can change each time the figures are published during the financial year.

These revisions will happen for one of a number of reasons:

- Incidents identified as crimes but not processed on the crime recording system by the time the figures are extracted for publication will appear in subsequent updates. For example, a crime is reported to the police on 1st November 2013 and it is fully processed on the crime recording system by 15th November 2013. As figures for the bulletin covering the latest 12 months to 30th November 2013 were extracted and published in December 2013, this crime will be included in the November figures in this publication. However if the same crime is not processed on the crime recording system until 15th January 2014, it will not be available for inclusion in the figures until the data extracted and published towards the end of January 2014.
- Figures may change from month to month due to crimes being reclassified from one crime type to another during the financial year. This may be because quality checks have identified the crime as incorrectly classified, or further information may indicate that the circumstances surrounding the crime were not as initially recorded.
- These revisions are not always in an upwards direction. The Home Office Counting Rules allow crimes initially recorded to be 'no crime'd' or removed from the crime figures. This can happen for a number of reasons:
 - the crime was committed outside the jurisdiction of the police force in which it was recorded;
 - additional verifiable information becomes available which determines that no notifiable crime has been committed;
 - the crime, as alleged, constitutes part of a crime already recorded;
 - the reported incident was recorded as a crime in error.

Full guidance on 'no crimes' is available in the [Home Office Counting Rules](#).

As the previous monthly update presented final figures for 2014/15 and as this is the first time figures for April 2015 have been published, the usual table outlining the extent of revisions for previously published figures is not required.

Introduction of Action Fraud within Northern Ireland: From 1st April 2015 Action Fraud has taken responsibility for the central recording of fraud offences previously recorded by PSNI; Action Fraud became responsible for all such reports in England & Wales by 1st April 2014. Action Fraud is the UK's National Reporting Centre for fraud and internet crime reported directly to them from the public and other organisations. While this means that these fraud offences are no longer recorded by PSNI, Action Fraud figures relating to victims residing in Northern Ireland will be provided to PSNI on a monthly basis. As a result, this bulletin contains a section on 'other fraud' which presents combined PSNI and Action Fraud figures covering the last two years. All other sections within the bulletin present figures on a comparable basis that exclude 'other fraud'.

Additional data

This bulletin shows a Northern Ireland level summary of police recorded crime for the 12 months to April 2015. Accompanying this bulletin are additional data in the form of [summary tables](#) and [pivot table data](#), both of which are available in excel spreadsheets. The data is also available in open data format.

The pivot tables allow the user to manipulate the data, select the data they are most interested in and carry out calculations on the data. The data records displayed in the pivot tables are also available in the same spreadsheet files. The pivot tables provide a range of data including recorded crime, crime outcomes (both numbers and rates) and victim age/gender/population rates; data measures are available for the previous and current rolling 12 months:

- at Northern Ireland level
- for a range of crime types;
- by age range or gender

National Statistics Designation

The United Kingdom Statistics Authority has designated these statistics as National Statistics, in accordance with the Statistics and Registration Service Act 2007 and signifying compliance with the Code of Practice for Official Statistics. Designation can be broadly interpreted to mean that the statistics:

- meet identified user needs;
- are well explained and readily accessible;
- are produced according to sound methods; and
- are managed impartially and objectively in the public interest.

Once statistics have been designated as National Statistics it is a statutory requirement that the Code of Practice shall continue to be observed.

The UK Statistics Authority commenced an assessment of police recorded crime in Northern Ireland in June 2014 and this was concluded after the publication of HMIC's crime data integrity report in March 2015. The Authority's [assessment report Number 301 Statistics on Police Recorded Crime in Northern Ireland \(Police Service of Northern Ireland\)](#) was published on 28th May. This report judged that the police recorded crime statistics in Northern Ireland can be designated as National Statistics (subject to implementing two requirements and reporting on these to the Authority by December 2015).

Geographic availability of police recorded crime statistics

Figures are available for a range of additional geographic areas through the [Northern Ireland Neighbourhood Information System \(NINIS\)](#). These figures are updated on an annual basis.

Provisional management information drawn from police recorded crime figures, published at street level each month, is available through the [police crime mapping website](#). The figures on the crime mapping website will differ from those provided in this bulletin as they have been extracted from the police administrative system on different dates, and also require a grid reference in order to be mapped.

Further information

[Trends in Police Recorded Crime in Northern Ireland 1998/99 to 2013/14](#) was published on 3rd July 2014 and provides detailed trend information covering this time period. An updated publication covering trends from 1998/99 to 2014/15 will be available in early August 2015, instead of early July 2015 as previously indicated.

Further details on Police Recorded Crime statistics are available in the [User Guide to Police Recorded Crime Statistics in Northern Ireland](#), and in the [Police Recorded Crime Statistics Quality Report](#). These are reference guides with explanatory notes regarding the issues and classifications which are key to the production and presentation of police recorded crime statistics.

Copies of other PSNI publications are available from the PSNI Internet site:

http://www.psni.police.uk/index/updates/updates_statistics.htm

Contact details

For further information about the police recorded crime statistics for Northern Ireland, or to contact the PSNI Crime Statistician please:

Email: statistics@psni.police.uk;

Write to: Statistics Branch, Lisnasharragh, 42 Montgomery Road, Belfast, BT6 9LD; or

Telephone: 028 9065 0222 ext 24135, Fax: 028 9092 2998