



Making Northern Ireland Safer For Everyone Through Professional, Progressive Policing

Statistical Report No. 5

INJURY ROAD TRAFFIC COLLISIONS & CASUALTIES

1ST APRIL 2006 – 31ST MARCH 2007

A NATIONAL STATISTICS PUBLICATION

Central Statistics Branch, Operational Support Department
Lisnasharragh, 42 Montgomery Road, Belfast, Northern Ireland, BT6 9LD
Web: www.psni.police.uk
Tel: 028 9065 0222 Fax: 028 9092 2998 Email: statistics@psni.police.uk

5. Injury Road Traffic Collisions and Casualties

Summary

Figure 5.1	Progress Towards the Year 2012 Casualty Reduction Target
Figure 5.2	Injury Road Traffic Collisions 1997/98 – 2006/07
Figure 5.3	Persons Killed in Injury Road Traffic Collisions 1997/98 – 2006/07
Figure 5.4	Child casualties (under 16) by Type of Road User 2006/07
Table 5.5	Injury Road Traffic Collisions and Casualties 1997/98 – 2006/07
Table 5.6	Injury Road Traffic Collisions Involving Child Casualties (under 16) 1997/98 – 2006/07
Table 5.7	Most Common Principal Factors in Injury Road Traffic Collisions 2006/07
Table 5.8	Most Common Principal Factors in Injury Road Traffic Collisions Involving Child Casualties (under 16) 2006/07
Table 5.9	Injury Road Traffic Collision Casualties by Severity of Injury and Type of Road User 2002/03 – 2006/07
Table 5.10	Child casualties (under 16) in Injury Road Traffic Collisions by Severity of Injury, Type of Road User and Age Group 2005/06 and 2006/07
Table 5.11	Casualties in Injury Road Traffic Collisions by Severity of Injury and District Command Unit 2005/06 and 2006/07

Injury Road Traffic Collisions - Definitions

A National Statistics Publication

National Statistics are produced to high professional standards set out in the National Statistics Code of Practice. They undergo regular quality assurance reviews to ensure they meet customer needs.

They are produced free from any political interference.

5. Injury Road Traffic Collisions and Casualties

Summary

Overview

- In 2006/07 there were 5,615 injury road traffic collisions that resulted in 9,232 casualties. Just under eleven per cent (983) of the casualties in 2006/07 were children aged under 16.

Number of Collisions

- The total number of injury road traffic collisions increased from 5,098 in 2005/06 to 5,615 in 2006/07 (an increase of 10.1%).
- 13.6% of the collisions resulted in child casualties.

Causes of Collisions

- The most common causes of injury collisions in 2006/07 were 'inattention' (977 collisions), 'excessive speed having regard to conditions' (612 collisions) and 'emerging from a minor road/driveway without care' (583 collisions).

Number and Severity of Casualties

- Of the 9,232 casualties, 128 were killed, 1,194 were seriously injured and 7,910 were slightly injured. Eight of the fatalities were children. Overall there was a 10.2% increase in casualties resulting from injury road traffic collisions (from 8,377 in 2005/06 to 9,232 in 2006/067).
- The overall increase in casualties in Northern Ireland was not reflected across all severities of injury, as there were 6 fewer fatalities (down 4.5%). However there was an increase of 79 serious injuries (up 7.1%) and an increase of 782 slight injuries (up 11.0%) in 2006/07 compared with the previous year.

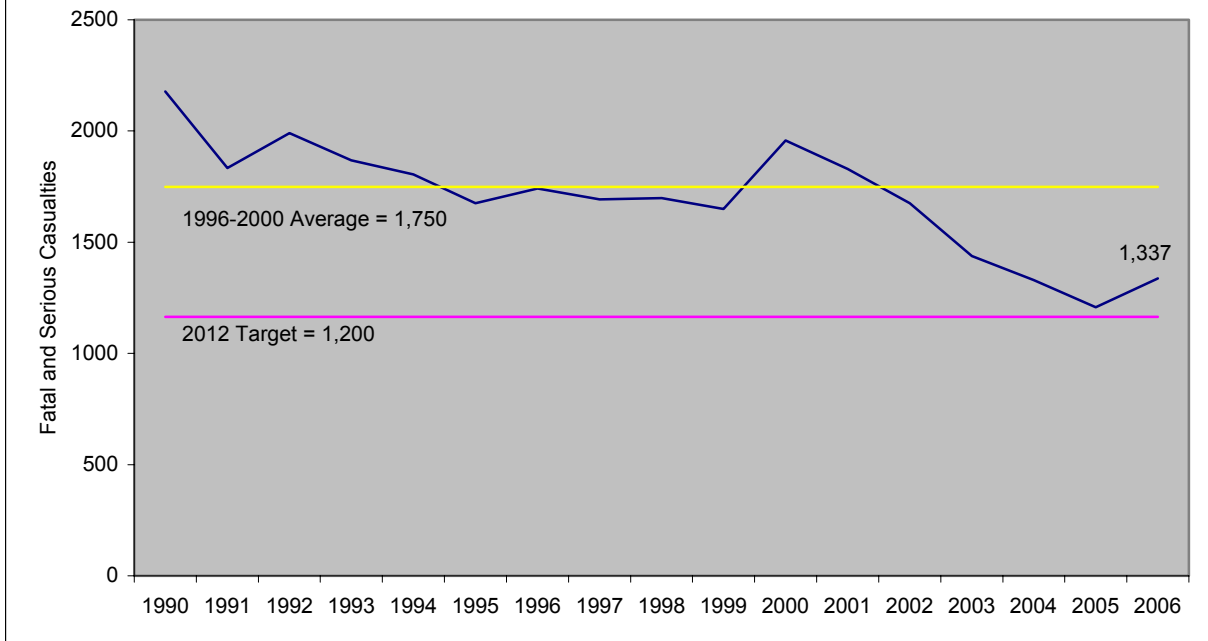
Casualties by Type of Road User

- In 2006/07 drivers of motor vehicles were the single largest casualty class, accounting for just over half (50.7%) of all casualties, followed by passengers (33.8%), pedestrians (8.4%), motor cyclists (4.5%) and pedal cyclists (1.7%).
- Two thirds (67.2%) of all child casualties were passengers, 25.1% were pedestrians and a further 5.4% were pedal cyclists.

The Casualty Reduction Target for 2012

- The Northern Ireland Road Safety Strategy was introduced in 2002 with the aim of achieving a one third reduction in the number of deaths and serious injuries on Northern Ireland's roads by 2012 (based on the average number of fatal & serious injuries between the years of 1996 and 2000). Progress towards achieving that target is shown in Figure 5.1. (Please note that this chart is based on calendar year statistics).

Figure 5.1: The Year 2012 Casualty Reduction Target



¹ Based on calendar year figures.

Figure 5.2: Injury Road Traffic Collisions 1997/98 - 2006/07

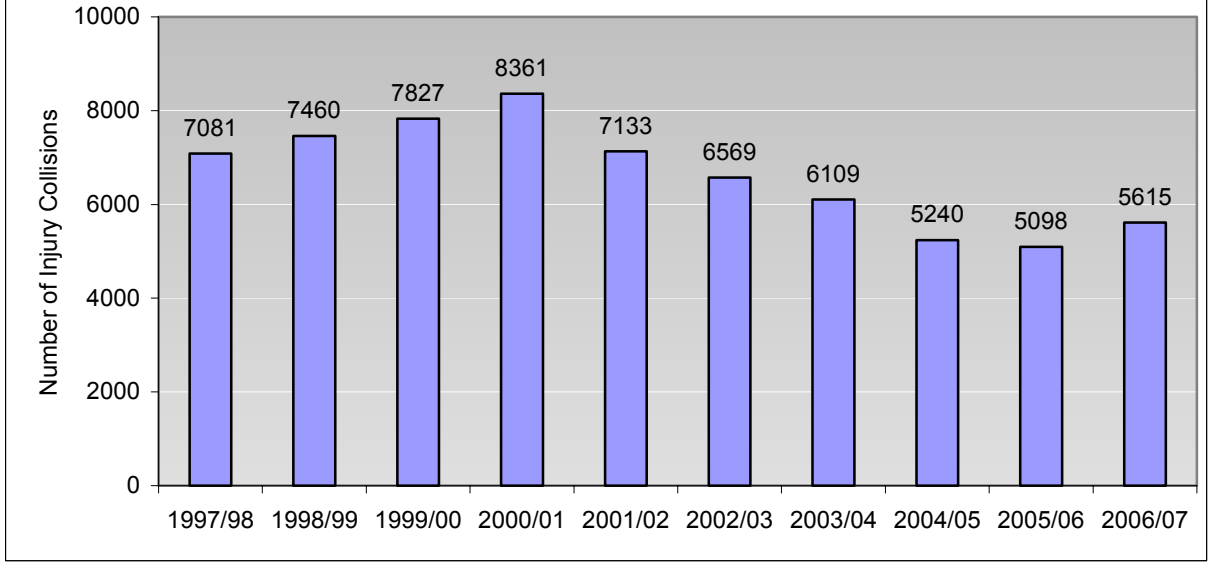


Figure 5.3 Persons Killed in Injury Road Traffic Collisions 1997/98 - 2006/07

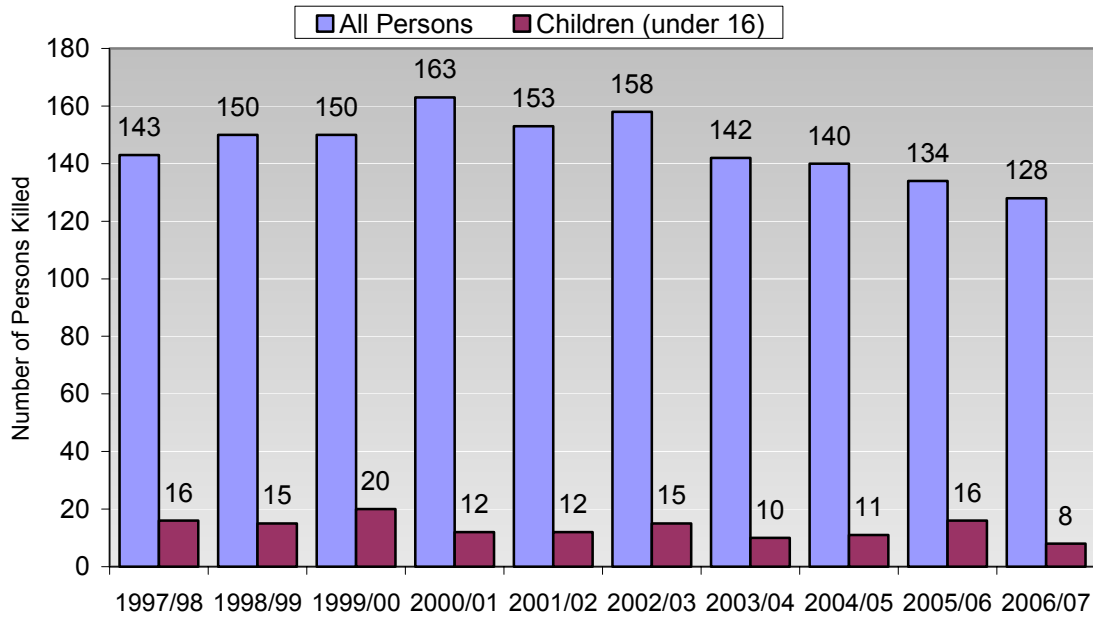


Figure 5.4: Child Casualties (under 16) by Type of Road User 2006/07

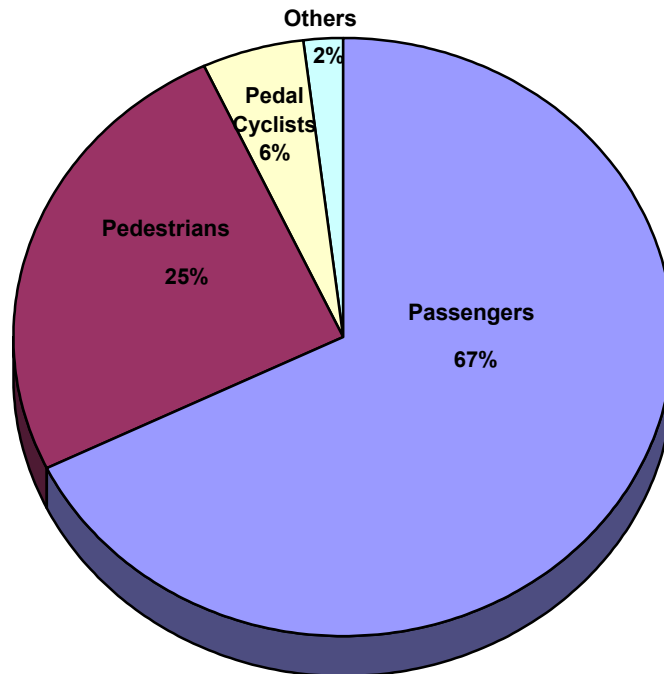


Table 5.5: Injury Road Traffic Collisions and Casualties 1997/98 – 2006/07

	Number of Injury Collisions	Casualties			
		Killed	Seriously Injured	Slightly Injured	Total Casualties
1997/98	7,081	143	1,526	10,912	12,581
1998/99	7,460	150	1,462	11,682	13,294
1999/00	7,827	150	1,573	12,170	13,893
2000/01	8,361	163	1,801	12,620	14,584
2001/02	7,133	153	1,638	10,812	12,603
2002/03	6,569	158	1,487	9,901	11,546
2003/04	6,109	142	1,258	9,022	10,422
2004/05	5,240	140	1,128	7,478	8,746
2005/06	5,098	134	1,115	7,128	8,377
2006/07	5,615	128	1,194	7,910	9,232

Table 5.6: Injury Road Traffic Collisions Involving Child Casualties (under 16) 1997/98 – 2006/07

	Number of Injury Collisions	Child Casualties			
		Killed	Seriously Injured	Slightly Injured	Total Casualties
1997/98	1,398	16	248	1,488	1,752
1998/99	1,472	15	218	1,641	1,874
1999/00	1,402	20	201	1,546	1,767
2000/01	1,376	12	226	1,566	1,804
2001/02	1,201	12	219	1,297	1,528
2002/03	1,039	15	173	1,248	1,436
2003/04	947	10	158	1,086	1,254
2004/05	790	11	124	873	1,008
2005/06	701	16	127	752	895
2006/07	762	8	128	847	983

Table 5.7: Most Common Principal Factors in Injury Road Traffic Collisions - 2006/07

Principal Factor	Number of Injury Collisions	Casualties			
		Killed	Seriously Injured	Slightly Injured	Total Casualties
Inattention	977	8	113	1448	1569
Excessive speed having regard to conditions	612	40	265	810	1115
Emerging from minor road/driveway without care	583	4	98	912	1014
Driving too close	532	1	21	875	897
Alcohol or drugs (All road users)	365	28	131	447	606
Turning right w/o care	289	2	56	464	522
Pedestrian heedless of traffic	246	9	63	188	260
Overtaking w/o care	238	6	82	353	441

Table 5.8: Most Common Principal Factors in Injury Road Traffic Collisions Involving Child Casualties (under 16) 2006/07

Principal Factor	Number of Injury Collisions	Child Casualties			
		Killed	Seriously Injured	Slightly Injured	Total Casualties
Inattention	132	0	15	158	173
Pedestrian heedless of traffic	97	3	25	70	98
Excessive speed having regard to conditions	70	2	13	82	97
Emerging from minor road/driveway without care	64	0	4	85	89
Driving too close	59	0	0	94	94

Table 5.9: Injury Road Traffic Collision Casualties by Severity of Injury and Type of Road User 2002/03 – 2006/07

Type of Road User ¹	2002/03	2003/04	2004/05	2005/06	2006/07
Fatalities:					
Pedestrians	26	29	24	25	23
Drivers of motor vehicles	62	54	62	63	47
Motor cyclists	21	17	24	12	18
Pedal cyclists	3	2	2	4	1
Passengers	43	37	26	30	38
Pillion passengers	1	1	1	0	0
Other road users	2	2	1	0	1
Totals	158	142	140	134	128
Serious Injuries:					
Pedestrians	236	205	180	198	190
Drivers of motor vehicles	643	522	479	467	519
Motor cyclists	166	145	151	126	135
Pedal cyclists	27	32	27	30	30
Passengers	395	334	275	283	300
Pillion passengers	14	8	9	6	8
Other road users	6	12	7	5	12
Totals	1,487	1,258	1,128	1,115	1,194
Slight Injuries:					
Pedestrians	607	569	474	484	567
Drivers of motor vehicles	5,073	4,580	3,905	3,754	4,115
Motor cyclists	284	305	292	257	259
Pedal cyclists	141	155	131	120	130
Passengers	3,739	3,378	2,633	2,473	2,787
Pillion passengers	19	12	10	12	21
Other road users	38	23	33	28	31
Totals	9,901	9,022	7,478	7,128	7,910
All Casualties:					
Pedestrians	869	803	678	707	780
Drivers of motor vehicles	5,778	5,156	4,446	4,284	4,681
Motor cyclists	471	467	467	395	412
Pedal cyclists	171	189	160	154	161
Passengers	4,177	3,749	2,934	2,786	3,125
Pillion passengers	34	21	20	18	29
Other road users	46	37	41	33	44
Totals	11,546	10,422	8,746	8,377	9,232

¹ 'Passengers' include pedal cycle passengers. 'Other road users' include drivers/riders and passengers of 'other vehicles' (e.g. tractors, invalid carriages, horse-drawn vehicles).

Table 5.10: Child Casualties (under 16) in Injury Road Traffic Collisions by Severity of Injury, Type of Road User and Age Group 2005/06 and 2006/07

Type of Road User ¹	2005/06				2006/07			
	Under 5	5 – 10	11 – 15	Totals	Under 5	5 – 10	11 – 15	Totals
Fatalities								
Pedestrians	1	1	5	7	1	1	2	4
Pedal cyclists	0	3	0	3	0	0	0	0
Passengers	0	1	3	4	2	2	0	4
Others	0	0	2	2	0	0	0	0
Totals	1	5	10	16	3	3	2	8
Serious Injuries								
Pedestrians	10	21	34	65	14	24	20	58
Pedal cyclists	0	4	4	8	0	6	6	12
Passengers	4	23	20	47	10	16	22	48
Others	0	1	6	7	0	0	10	10
Totals	14	49	64	127	24	46	58	128
Slight Injuries								
Pedestrians	24	60	86	170	25	70	90	185
Pedal cyclists	3	24	11	38	1	21	19	41
Passengers	112	195	229	536	144	244	221	609
Others	1	0	7	8	0	3	9	12
Totals	140	279	333	752	170	338	339	847
All Child Casualties								
Pedestrians	35	82	125	242	40	95	112	247
Pedal cyclists	3	31	15	49	1	27	25	53
Passengers	116	219	252	587	156	262	243	661
Others	1	1	15	17	0	3	19	22
Totals	155	333	407	895	197	387	399	983

¹ 'Passengers' include pedal cycle passengers.

'Others' include drivers of motor vehicles, riders and pillion passengers on motor cycles and drivers/riders and passengers of 'other vehicles' (e.g. tractors, invalid carriages and horse-drawn vehicles etc.).

Table 5.11: Casualties in Injury Road Traffic Collisions by Severity of Injury and District Command Unit 2005/06 and 2006/07

	2005/06				2006/07			
	Killed	Seriously Injured	Slightly Injured	Total	Killed	Seriously Injured	Slightly Injured	Total
Antrim	6	24	190	220	11	50	293	354
Ards	6	48	310	364	4	50	345	399
Armagh	4	52	272	328	7	57	271	335
Ballymena	8	55	250	313	4	49	271	324
Ballymoney	3	16	89	108	1	27	121	149
Banbridge	1	28	206	235	3	34	184	221
Carrickfergus	0	24	129	153	1	27	148	176
Castlereagh	3	11	189	203	5	21	268	294
Coleraine	4	37	150	191	13	31	166	210
Cookstown	4	37	156	197	4	29	153	186
Craigavon	2	49	352	403	2	41	322	365
Down	6	32	236	274	7	46	204	257
Dungannon and South Tyrone	6	51	277	334	8	49	210	267
East Belfast	1	34	323	358	1	30	408	439
Fermanagh	13	61	275	349	16	55	277	348
Foyle	7	52	370	429	0	26	258	284
Larne	2	24	82	108	2	26	120	148
Limavady	6	41	199	246	2	36	176	214
Lisburn	7	87	513	607	7	74	575	656
Magherafelt	10	36	168	214	1	30	218	249
Moyle	0	11	51	62	3	12	52	67
Newry and Mourne	10	30	152	192	7	68	323	398
Newtownabbey	5	45	323	373	3	66	452	521
North Belfast	2	45	565	612	2	51	493	546
North Down	4	40	274	318	3	37	341	381
Omagh	7	36	210	253	3	54	206	263
South Belfast	2	43	333	378	1	52	480	533
Strabane	0	31	120	151	5	27	150	182
West Belfast	5	35	364	404	2	39	425	466
Totals	134	1,115	7,128	8,377	128	1,194	7,910	9,232

Injury Road Traffic Collisions - Definitions

Collisions

Collisions involving personal injury occurring on the public highway (including footpaths) in which a vehicle is involved. Collisions are categorised as either 'Fatal', 'Serious' or 'Slight' according to the most severely injured casualty.

Killed

Died within 30 days from injuries received in a collision.

Serious Injury

An injury for which a person is detained in hospital as an 'in-patient', or any of the following injuries whether or not the person is detained in hospital: fractures, concussion, internal injuries, crushings, burns, severe cuts and lacerations or severe general shock requiring medical treatment.

Slight Injury

An injury of a minor character such as a sprain, bruise or cut not judged to be severe, or slight shock requiring roadside attention.

Casualty

A person who sustains a slight, serious or fatal injury.

Children

Persons under 16 years of age.

Drivers of motor vehicles

Drivers of hackneys, cars, motor caravans, LGVs, HGVs, cars used as taxis, minibuses and buses.

Motorcyclists

Drivers/riders of mopeds and motorcycles. Includes riders of two-wheeled motor vehicles, motorcycle combinations, scooters and mopeds.

Pedal cyclists

Drivers/riders of pedal cycles. Includes children riding toy cycles on the carriageway and the first rider of a tandem.

Passengers

Occupants of vehicles other than the driver or rider. Passengers of hackneys, cars, motor caravans, LGVs, HGVs, cars used as taxis, minibuses, buses and pedal cycles.

Pillion passengers

Passenger on a moped or motorcycle.

Other road users

Drivers and passengers of invalid/3 wheelers, tractors, ridden horses, other motor vehicles and other non motor vehicles.

Pedestrians

Include:

- Children on scooters, roller skates or skateboards;
- Children riding toy cycles on the footpath;
- Persons pushing bicycles or other vehicles or operating pedestrian-controlled vehicles;
- Persons leading or herding animals;
- Occupants of prams or wheelchairs;
- People who alight safely from vehicles and are subsequently injured;
- Persons pushing or pulling a vehicle;
- Persons other than cyclists holding on to the back of a moving vehicle.